



MEVA HN

The flexible and efficient
slab solution



MEVA HN

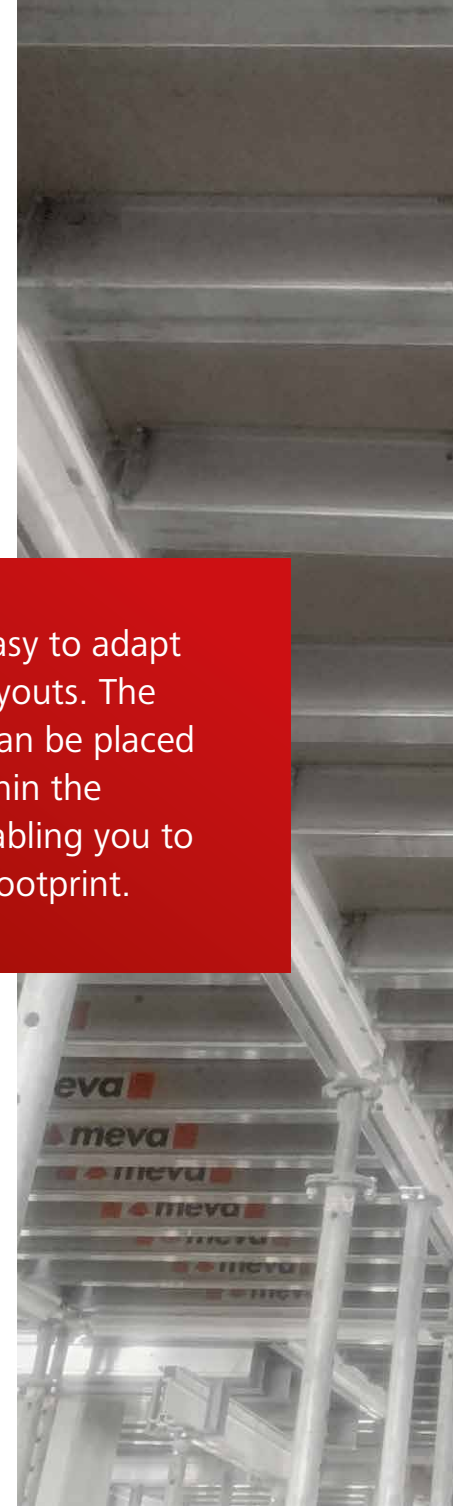
The versatile and adaptable grid slab solution

The fast, efficient, labor-saving solution for concrete slab construction

The MEVA HN slab forming system features drop heads for early stripping with primary beams (H) and secondary beams (N) that create efficient grid work and adapt to varying layouts – saving time, labor, and costs on the job site.



MEVA HN is very easy to adapt to changing slab layouts. The secondary beams can be placed and slide freely within the primary beams; enabling you to adjust to any slab footprint.





i

Simple. Smart.

- **Primary and secondary beam method**
 - Assembly begins in a corner for easy formation in both directions; primary beams are assembled parallel to the longer wall
- **Ability to switch forming direction at any time**
 - MEVA HN primary beams can be connected 90° to another primary beam so that the direction can be changed to form around obstacles such as columns and shear walls
- **Less compensation areas are required**
 - Because MEVA HN secondary beams can be placed into the primary beam anywhere along its length and is not on a fixed grid, less filler areas are necessary
- **The MEVA drop head allows for faster stripping and cycling**
 - The drop head permits lowering of the formwork by 7½" (19 cm)
 - Only the post shores with drop heads remain in position to support the weight of the slab until the concrete is strong enough to support its own weight
- **Adjusts for length and unusual geometries**
 - If the building design does not allow one more primary beam to fit in the beam row, you can simply change the direction by 90°
- **Complete formwork solutions**
 - MEVA HN can be used in conjunction with the MEP shoring systems, making its range of applications wider and more flexible than other systems
- **Use the facing of your choice**
- **A wide range of slab thicknesses are achievable**

MEVA HN

One system, many options

Simple solutions for complex designs

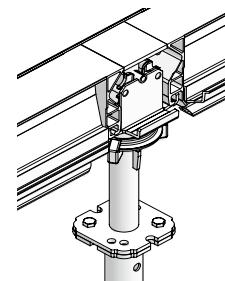
MEVA HN assembly generally begins in a corner for easy assembly in both directions. The rows of primary beams are assembled parallel to the longer wall. The secondary beams are placed into the primary beams so that both are situated at the same level, then the plywood decking is placed on top.

The MEVA HN system can be adjusted to accommodate complicated shapes with the same components used for typical slab applications. If the building design does not allow one more primary beam to fit in the beam row, you can simply change the assembly direction by 90° – another advantage of the MEVA HN system. Secondary beams can be placed into the primary beam anywhere along its length, allowing for even more flexibility around columns and complex geometries.

The HN slab forming system was designed for seamless integration with the MEP system, making the range of applications for use more versatile than many of its competitors.

Columns

By having the ability to place a primary beam perpendicular to another primary beam, MEVA HN offers flexibility to form easily and efficiently around columns and shear walls.

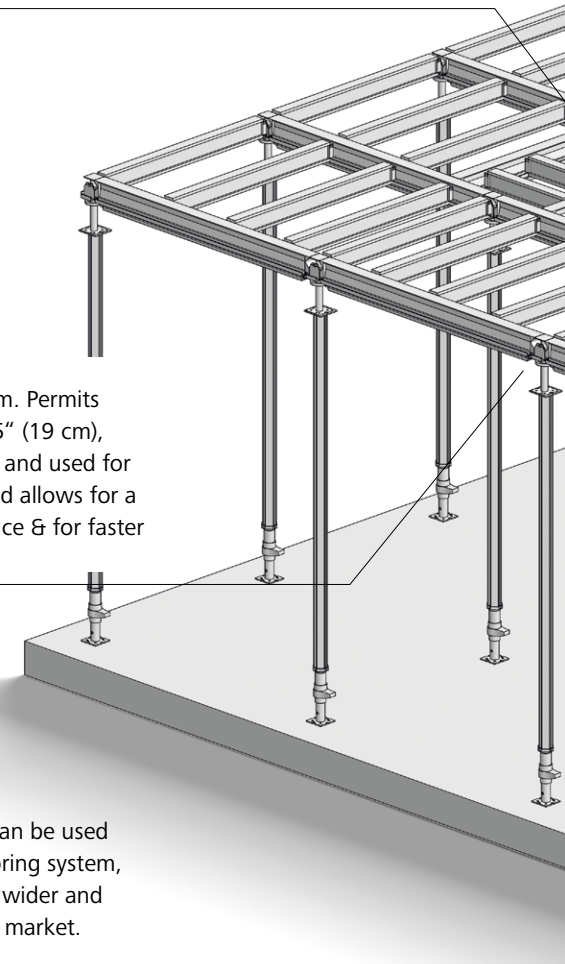


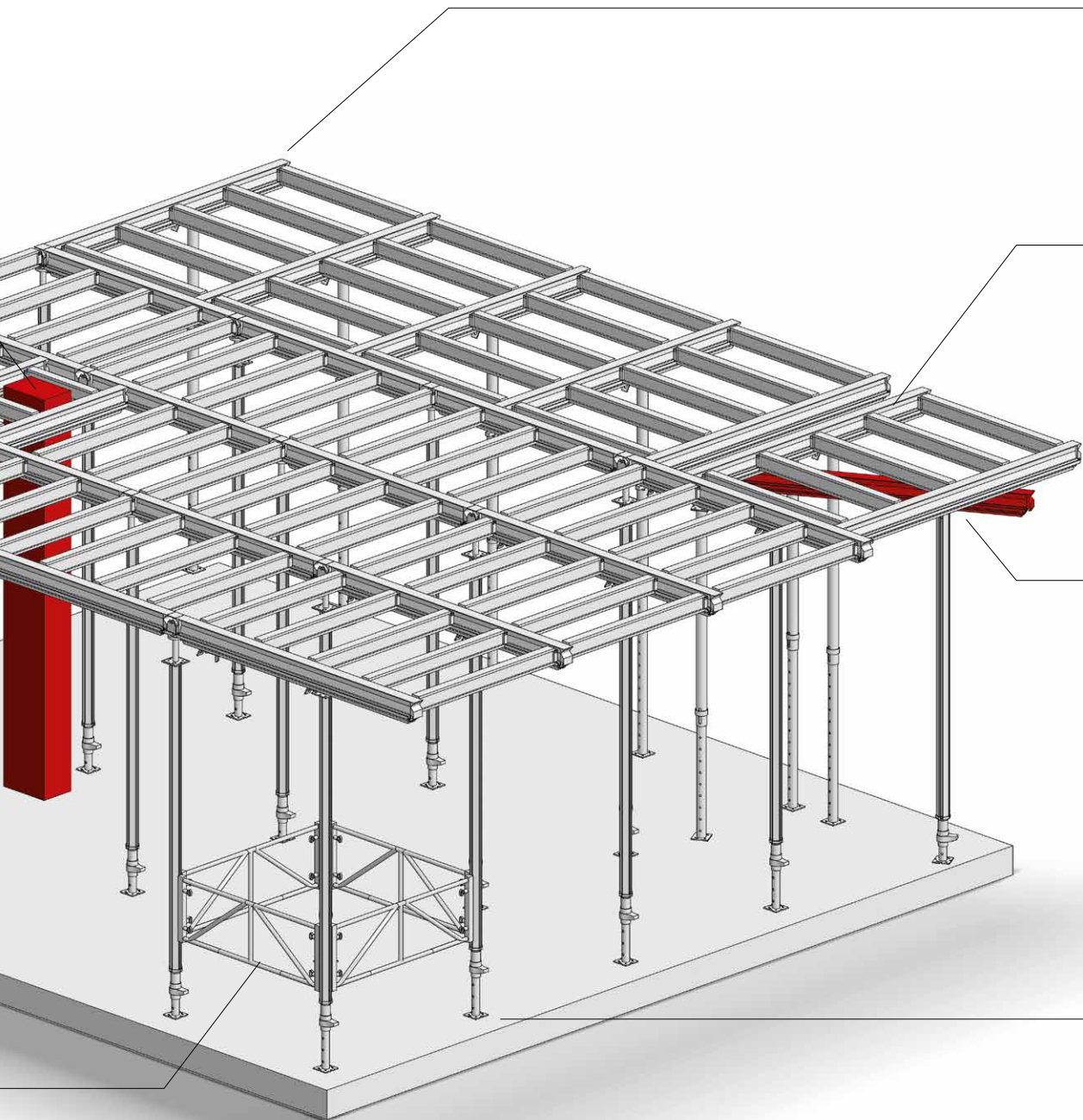
MEVA Drop head

Easy attachment to primary beam. Permits lowering of the formwork by 7.5" (19 cm), so beams can be easily removed and used for the next shoring cycle. Drop head allows for a larger grid pattern, more clearance & for faster stripping and cycling.

MEVA HN and MEP

MEVA HN slab forming system can be used in conjunction with the MEP shoring system, making its range of applications wider and more flexible than others on the market.



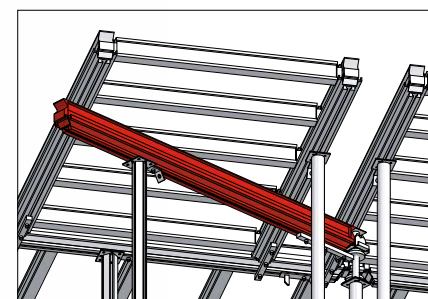


MEVA HN assembly

MEVA HN Assembly generally begins in a corner for easy erection in both directions. The rows of primary beams are assembled parallel to the longer wall.

Slab edge and cantilever

Free slab edges can be achieved using an MD prop connector, MD beam stiffener, and MD guard railing post. The connector allows for direct support of cantilevering primary beams, with the integrated eye permitting the formwork to be anchored with a tie down chain.



MD prop connector

MEP post shores

Formwork.
Simple. Smart.

Pioneer and Trendsetter

More with MEVA

Formwork. Simple. Smart.

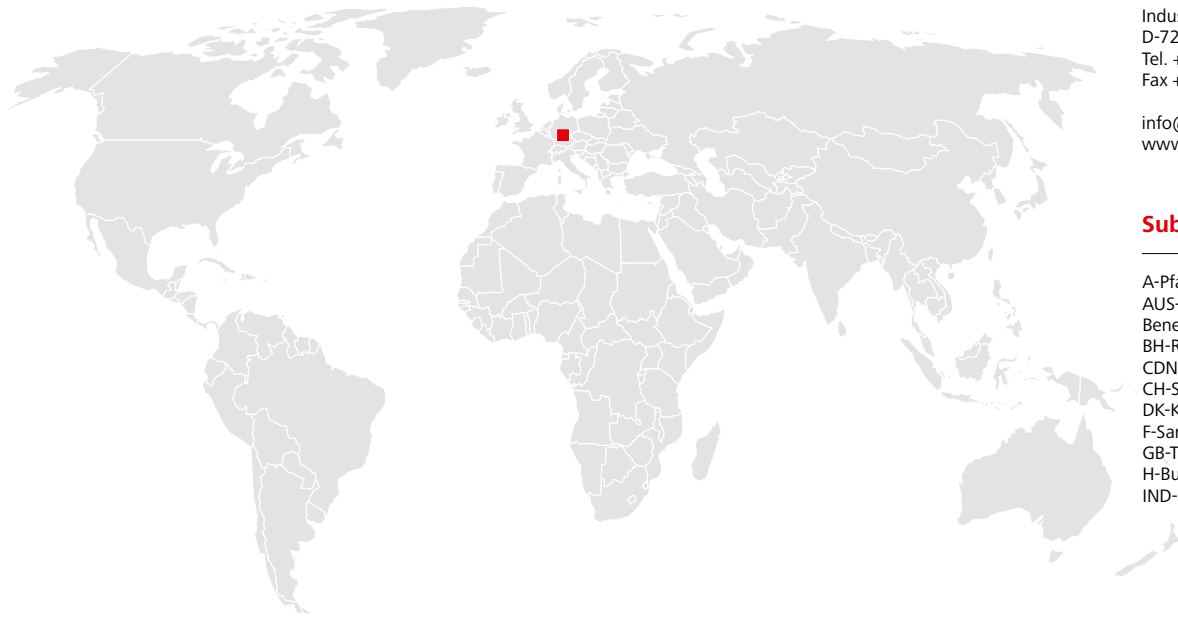
A lot of things that are now considered to be standard in the formwork industry were developed by MEVA in Haiterbach, Germany. As a trendsetter for the entire industry, we work day in and day out to make formwork safer, more efficient and easier for our customers to use. For us, the excellent quality of our products and advancing formwork technology is par for the course.

We are independent, family-run, and committed to the values of a medium-sized company in everything we do. That is why our customers may rightly expect not only the most advanced products but also a comprehensive, personal commitment to projects all around the world.

From the most intricate special formwork designs to simple, standard formwork applications: Our experience and wide range of products make us a strong and able partner, even for the most complex challenges in modern day concrete construction.

You can rely on us wherever you are.

With 40 offices on 5 continents, we are
on the spot wherever you need us.



MEVA Schalungs-Systeme GmbH

Industriestrasse 5 Tel. +49 7456 692-01
72221 Haiterbach Fax +49 7456 692-66
Germany info@meva.net

www.meva.net

MEVA North America

MEVA Formwork Systems, Inc.
2000 Airpark Dr.
Springfield, OH 45502
United States of America
Tel. +1 937 328 0022
Fax +1 937 328 0044

Southeast Distribution Center
11701 Mt. Holly Road
Charlotte, NC 28214

info@mevaformwork.com
www.mevaformwork.com

Headquarters (Germany)

MEVA Schalungs-Systeme GmbH
Industriestrasse 5
D-72221 Haiterbach
Tel. +49 7456 692-01
Fax +49 7456 692-66

info@meva.net
www.meva.net

Subsidiaries/international bases

A-Pfaffstätten	Tel. +43 2252 20900-0	LATAM	latam@meva.net
AUS-Adelaide	Tel. +61 8 82634377	MA-Casablanca	Tel. +212 684-602243
Benelux, Gouda	Tel. +31 182 570770	MAL-Perak	Tel. +60 12 5209337
BH-Riffa	Tel. +973 3322 4290	N-Oslo	Tel. +47 67 154200
CDN-Toronto	Tel. +1 416 8278714	PA-Panama City	Tel. +507 2372222
CH-Seon	Tel. +41 62 7697100	PH-Manila	Tel. +63 998 5416975
DK-Køge	Tel. +45 56 311855	QA-Doha	Tel. +974 4006 8485
F-Sarreguemines	Tel. +33 387 959938	SGP-Singapore	Tel. +65 67354459
GB-Tamworth	Tel. +44 1827 60217	UAE-Dubai	Tel. +971 4 3411180
H-Budapest	Tel. +36 1 2722222	USA-Springfield	Tel. +1 937 3280022
IND-Mumbai	Tel. +91 22 27563430		