

Product list

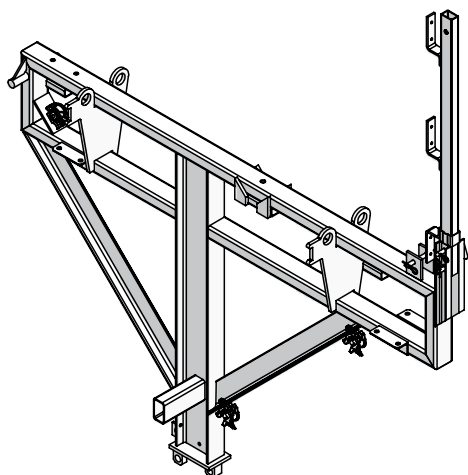
This product list includes all parts necessary for most applications. For parts required for special applications, please refer to the MEVA price list. Dimensions are in centimetres (cm) unless another measure is shown.

Contents

Access hatch KLK	65	Ladder connector	63
Anchor plate	59	Ladder fixture KLK	64
Beam clamp 295	53	Ladder link set KLK	64
Beam clamp H20	68	Positioning disc M24	58
Bearing for formwork clamping fixture KLK	51	Quick-release belt fastener	54
Bearing pocket	68	Railing clamp	56
Bolt 30/130	66	Rigid coupler 48/48	61
Bolt-on coupler 48/M14	61	Safety cage	63
Brace SRL 120	52	Safety eye	53
Bracket extension	49	Scaffolding bracket	57
Clamp for guard-railing post	57	Scaffold tube	60
Climbing bracket KLK 230	48	Shaft folding bearing plate	68
Climbing cone 15/M24	58	Shaft platform girder	67
Climbing cone 20/M24	58	Side protection net 200/1000	54
Combination spanner	60	Slide carriage	50
Concrete cone 56 x 40	60	Square spanner	50
Conical sleeve	58	Support for guard-railing post KLK	55
Crane eye	66	Support for guard-railing post SDT	55
Extension for guard-railing KLK 230	54	Suspension screw M24	59
Extension ladder	62	Suspension shoe KLK	49
Folding suspension	66	Swivel-joint coupler 48/48	61
Formwork adapter	50	Swivel-tube coupler 48	61
Formwork clamping fixture KLK	51	Tension belt	53
Formwork support KLK	52	Tension belt clamp H20	53
Guard-railing post	56	Tension rod extension	70
Guard-railing post KLK 230	55	Threaded rod LH	69
Guard-railing post UK	65	Threaded rod RH	69
Hexagonal screw M24x80, 10.9	59	Transport spreader KLK	60
Holding device for push-pull props	52	Turnbuckle nut M16	70
KLK 230 UK	65	Wall strut	48
Ladder	62	Washer M24, DIN 7349-25	59
Ladder base KLK	64		

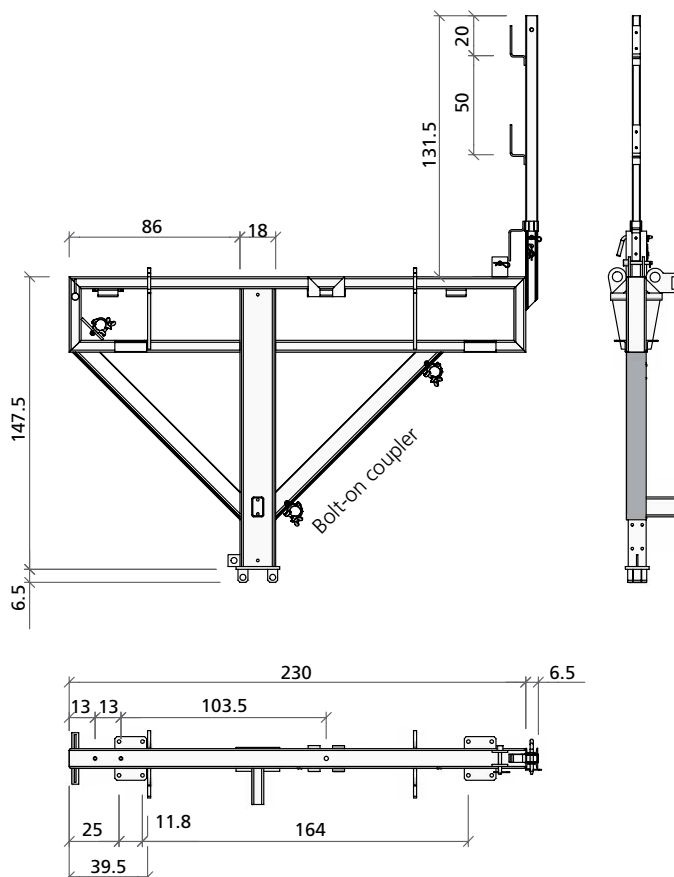
Climbing bracket KLK 230

Solid steel construction, coated, with folding guard-railing post. Is used to build climbing scaffolds. Working width: 2.30 m.



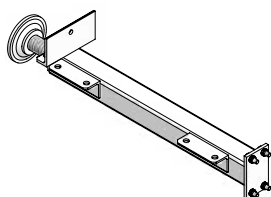
Ref. No.	Description / Application	m ²	kg
----------	---------------------------	----------------	----

29-411-00	Climbing bracket KLK 230		176.5
-----------	--------------------------	--	-------



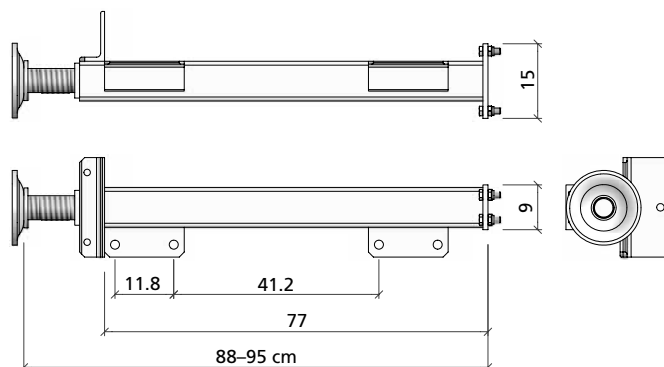
Wall strut

Coated. With spindle. Is attached to the climbing bracket or bracket extension and used to transfer the load to the wall. Delivery includes 4 bolts M12x35.



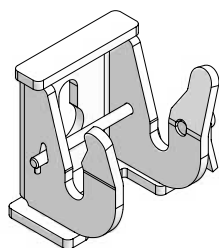
Ref. No.	Description / Application	m ²	kg
----------	---------------------------	----------------	----

29-411-30	Wall strut		17.3
-----------	------------	--	------

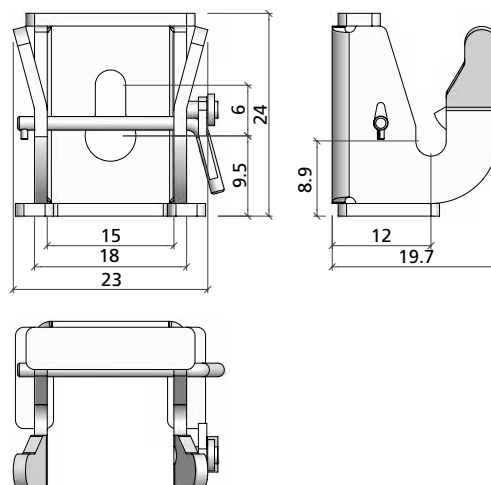


Suspension shoe KLK

Galvanized. With safety pin and uplift protection for the climbing bracket. Is used to suspend the climbing bracket and connected to the wall with suspension screw M24.



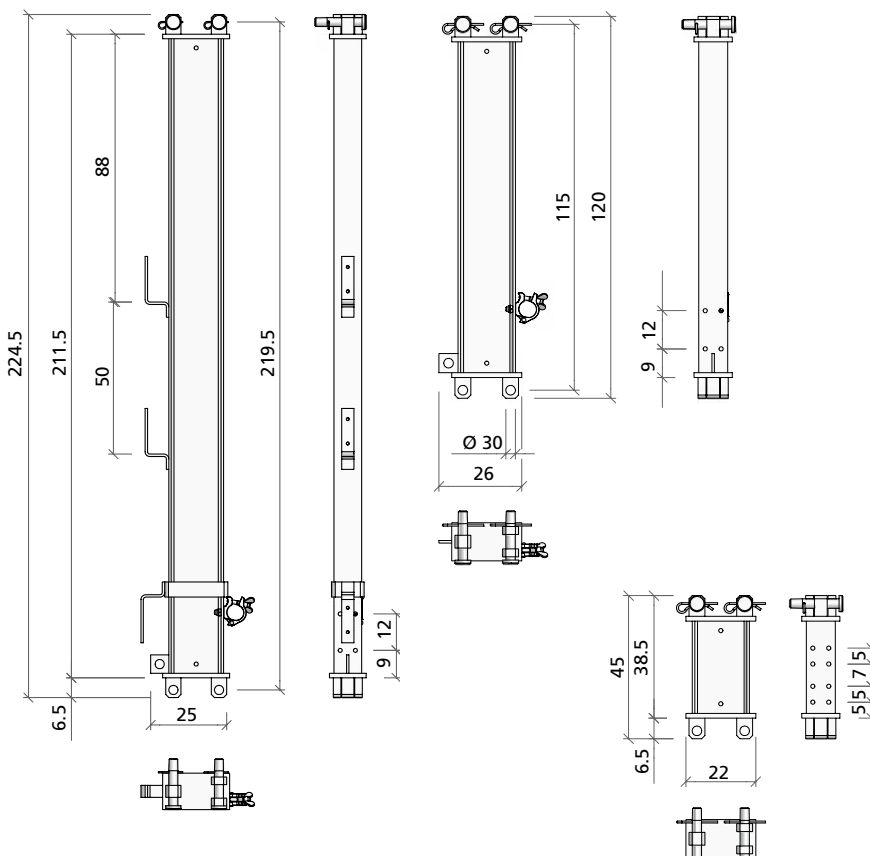
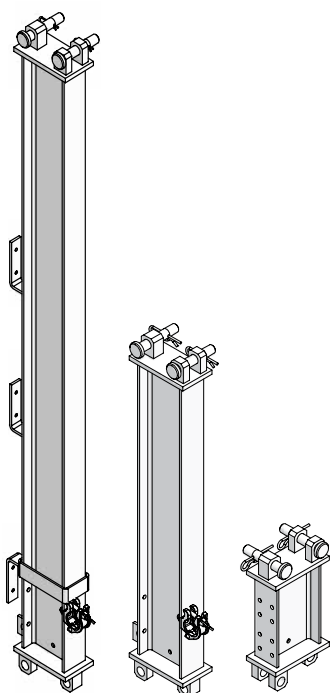
Ref. No.	Description / Application	m ²	kg
29-411-05	Suspension shoe KLK		13.7



Bracket extension

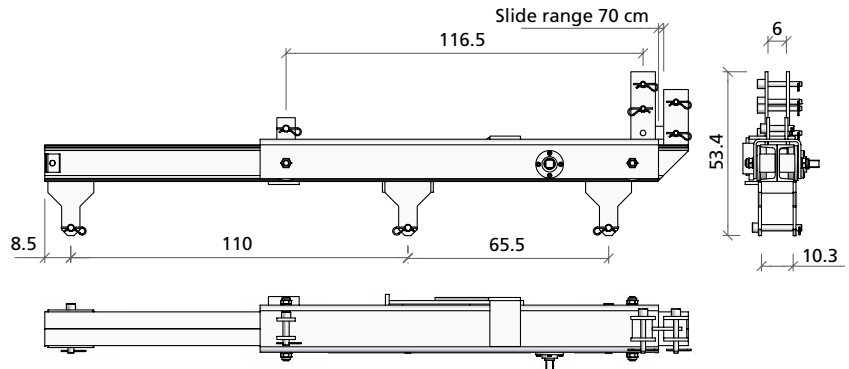
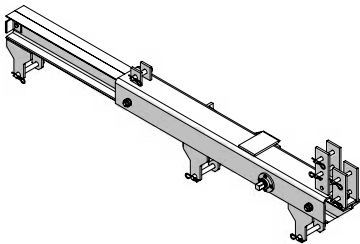
Coated. Is used together with a wall strut to transfer high loads and build a secondary platform (with 94 cm working width), which allows the necessary finishing work to be safely done.

Ref. No.	Description / Application	m ²	kg
29-411-20	Bracket extension 220		57.0
29-411-22	Bracket extension 120		33.0
29-416-40	Bracket extension 40		18.1



Slide carriage

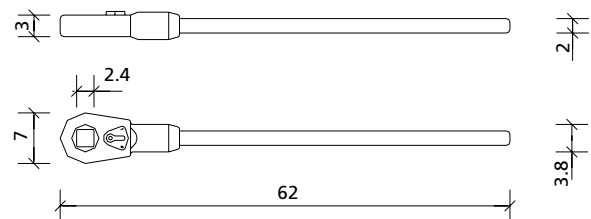
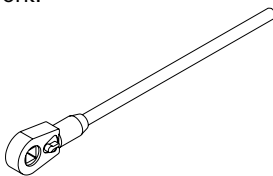
Coated. Is used to move the formwork back and forth by 70 cm. The range of 70 cm provides sufficient working space to install blockouts, rebars, etc. A square spanner is used to slide the carriage. When supplemented with a formwork clamping fixture KLK, the slide carriage allows building a transport unit consisting of formwork and climbing scaffold.



Ref. No.	Description / Application	m ²	kg
29-411-50	Slide carriage		132.0

Square spanner

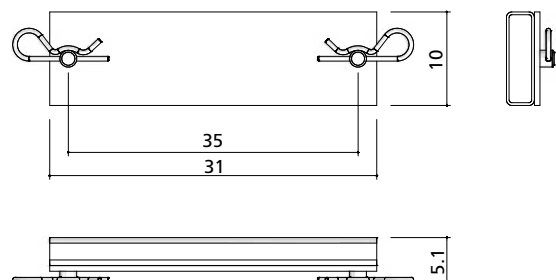
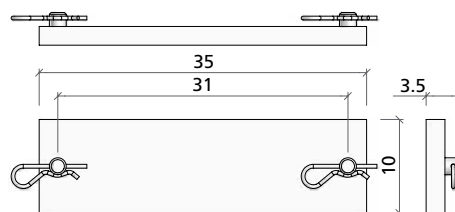
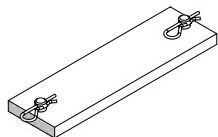
Galvanized. Is used to operate the slide carriage. At least 2 spanners should be available on a construction site that uses a slide carriage on climbing formwork.



Ref. No.	Description / Application	m ²	kg
29-411-45	Square spanner (for carriage)		2.7

Formwork adaptor

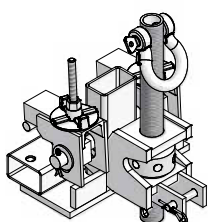
Coated. Is used to connect AluStar, StarTec, AluFix, EcoAs or Mevalite panels to the formwork clamping fixture KLK or to the formwork support KLK.



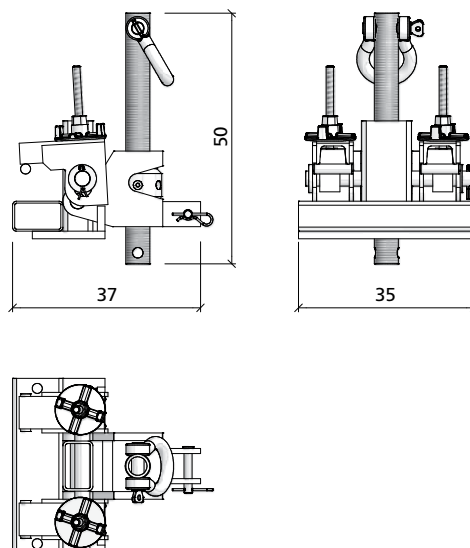
Ref. No.	Description / Application	m ²	kg
29-411-65	Formwork adaptor AS/ST		5.0
29-411-92	Formwork adaptor EA/ML		3.8

Formwork clamping fixture KLK

Coated. Height-adjustable, provided with a tilting hinge. Is used to attach wall formwork and allows building a transport unit with formwork and climbing scaffold. Usable with or without slide carriage. In the latter case, a bearing for formwork clamping fixture KLK, a holding device for push-pull props and a brace SRL 120 are also required.

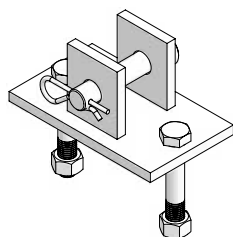


Ref. No.	Description / Application	m ²	kg
29-411-60	Formwork clamping fixture KLK		41.1

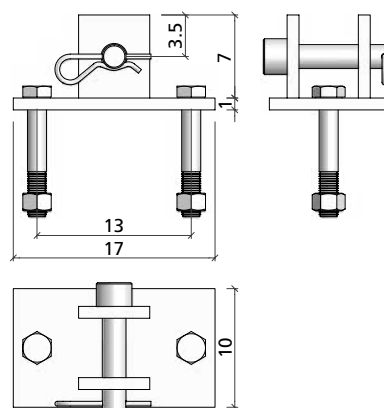


Bearing for formwork clamping fixture KLK

Coated. Connects the formwork clamping fixture KLK to the climbing bracket KLK. Is required when the formwork clamping fixture KLK is used without slide carriage.

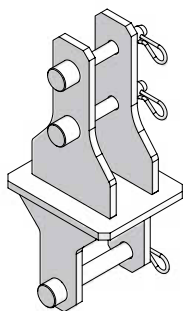


Ref. No.	Description / Application	m ²	kg
29-411-70	Bearing for formwork clamping fixture KLK		2.7



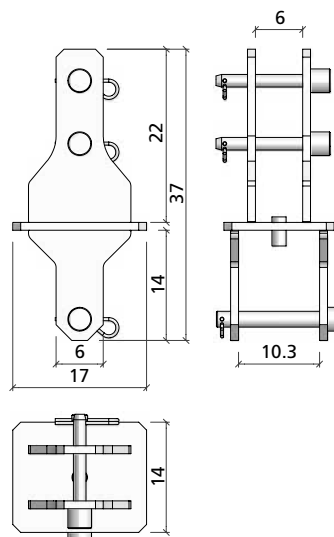
Holding device for push-pull props

Galvanized. Is used to attach push-pull props to brace the formwork when using either the formwork support KLK or the formwork clamping fixture KLK without the slide carriage.



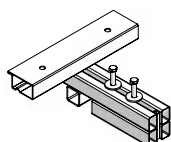
Ref. No.	Description / Application	m ²	kg
----------	---------------------------	----------------	----

29-411-25	Holding device for push-pull props	7.3	
-----------	------------------------------------	-----	--



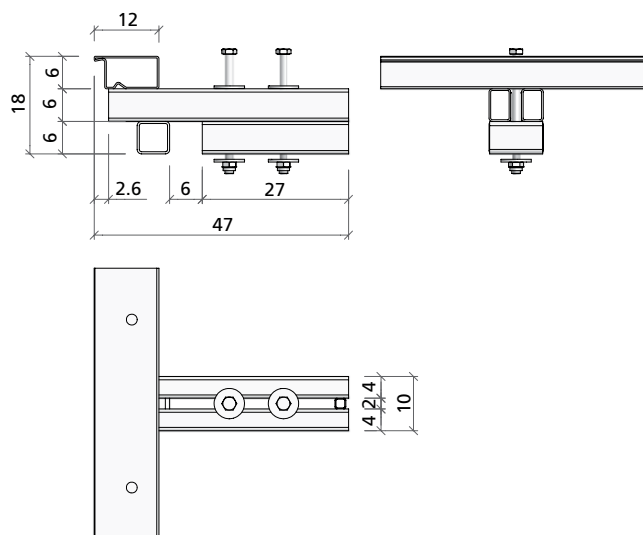
Formwork support KLK

Galvanized. Is used to place the (separate) formwork onto the bracket, is required when neither a slide carriage nor a formwork clamping fixture KLK are used. The formwork is attached to the formwork support with M assembly or Uni-assembly locks.



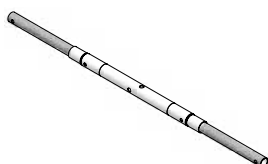
Ref. No.	Description / Application	m ²	kg
----------	---------------------------	----------------	----

29-411-90	Formwork support KLK	12.0	
-----------	----------------------	------	--



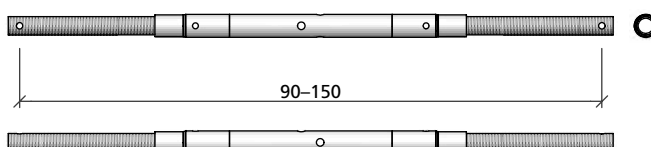
Brace SRL 120

Galvanized. Is used to press the formwork against the previous pour and required when the formwork clamping fixture KLK is used.



Ref. No.	Description / Application	m ²	kg
----------	---------------------------	----------------	----

29-108-80	Brace SRL 120 (90-150)	8.3	
29-108-90	Brace SRL 170 (120-220)	10.5	



Tension belt

Not shown. For safety against wind load. 50 mm wide, reinforced loop 200 mm, cranked snap hook with safety flap, DIN EN 12195. Adm. load: 25 kN (straight), 50 kN (strapped). Is attached to the climbing bracket KLK or bracket extension and the with safety eye to the concrete wall. This can be done at the cone from the previous pour.

Ref. No.	Description / Application	m ²	kg
29-930-10	Tension belt with hook and loop		3.8
29-930-15	Tension belt with hook on both ends		3.9

Tension belt clamp H20

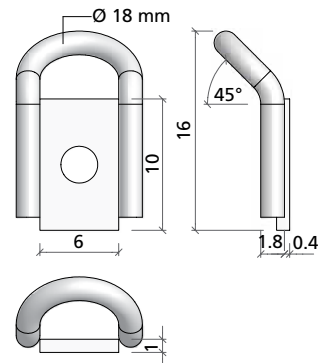
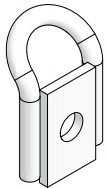
Not shown. Galvanized. Is attached to two wooden girders H20. Has eyes to attach the tension belt.

Ref. No.	Description / Application	m ²	kg
29-930-90	Tension belt clamp H20		

Safety eye

Is used to attach the 20 kN tensioning chain for wind bracing. Is attached to the cone from the previous pour with a screw M24x50 (SW 36). A washer M24 is required.

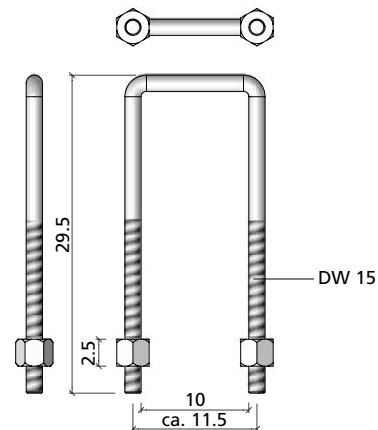
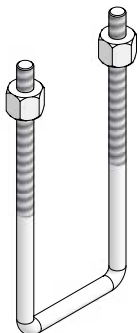
Ref. No.	Description / Application	m ²	kg
29-412-40	Safety eye		1.3



Beam clamp 295

Galvanized. Is used to clamp longitudinal girders such H20 girders to the climbing bracket KLK when assembling the KLK climbing scaffold.

Ref. No.	Description / Application	m ²	kg
29-412-60	Beam clamp 295		1.2



Side protection net 200/1000

Not shown. Size 2.00 m x 10.00 m, mesh width 100 mm, red colour. Integrated quick-release belt fasteners allow for a quick assembly of the protection net. Complies with German DIN 4420 standard and is approved by building authorities.

Ref. No.	Description / Application	m ²	kg
29-108-60 Side protection net 200/1000	6.5	

Quick-release belt fastener

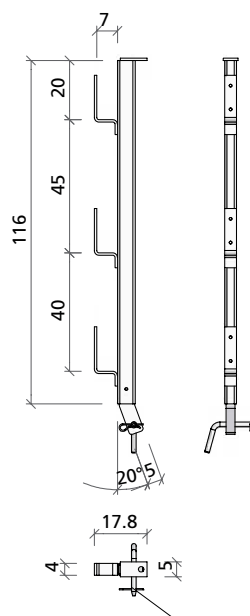
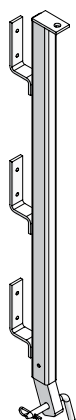
Not shown. Allows for a quick assembly of side protection nets. Length 55 cm, belt width 25 mm, red colour. Approved by building authorities.

Ref. No.	Description / Application	m ²	kg
29-108-65 Quick-release belt fastener		

Extension for guard-railing KLK 230

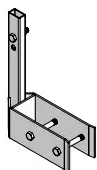
Coated. Inclination 20°. Extends the guard-railing of the KLK 230 climbing scaffold by approx. 1.00 m.

Ref. No.	Description / Application	m ²	kg
29-411-75 Extension for guard-railing KLK 230	10.9	

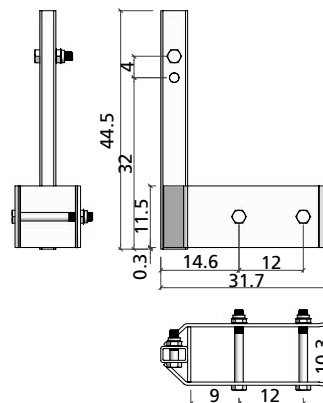


Support for guard-railing post KLK

Galvanized. With screws. Is attached to the platform timber (width 10 cm) and used as additional guard-railing post between climbing scaffolds KLK 230 and/or as a side railing according to standard DIN 4420. The guard-railing post KLK is also required.

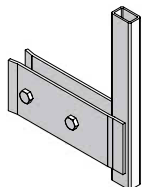


Ref. No.	Description / Application	m ²	kg
29-411-77 Support for guard-railing post KLK 230, galv.	6.9	

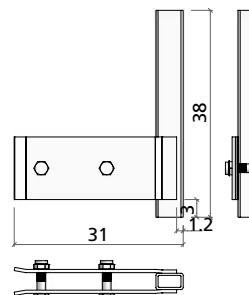


Support for guard-railing post SDT

Galvanized. With screws. Is attached to the web of the H20 girders and used for the construction of a (side) railing. Guard-railing post 100 or 140 is also required.

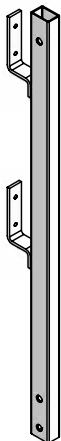


Ref. No.	Description / Application	m ²	kg
29-106-90 Support for guard-railing post SDT, galv.	5.4	

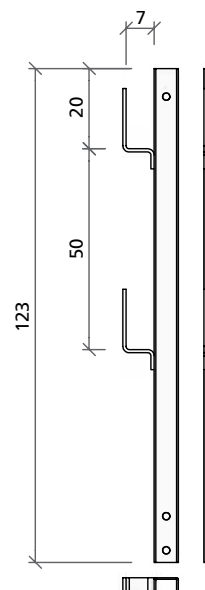


Guard-railing post KLK 230

Galvanized. Can be attached to the support for guard-railing post KLK 230 and be used as a replacement part for the climbing scaffold KLK 230.

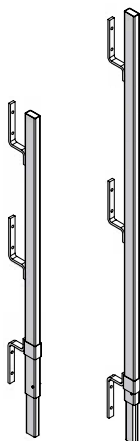


Ref. No.	Description / Application	m ²	kg
29-411-78 Guard-railing post KLK 230	8.1	

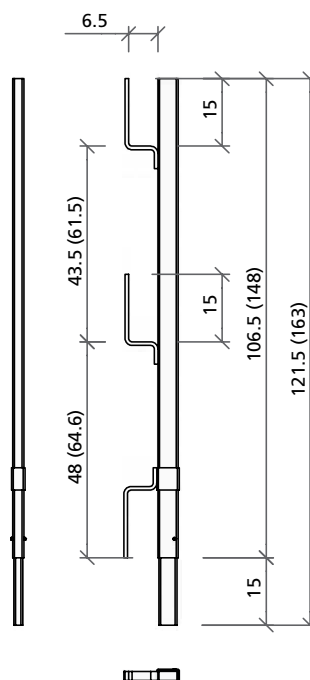


Guard-railing post

Galvanized. Is plugged into the scaffolding bracket.



Ref. No.	Description / Application	m ²	kg
29-106-75	Guard-railing post 100, galv.	3.7	
29-106-85	Guard-railing post 140, galv.	4.7	



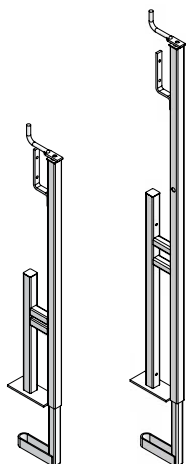
The number in parentheses refer to guard-railing post 140

Railing clamp

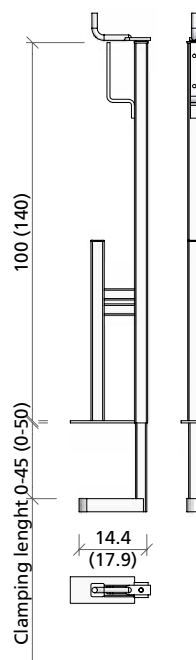
Coated. Is used as side railing at free slab edges and can be clamped to all kinds of beams.

Railing clamp 100: height 100 cm, clamping length 45 cm.

Railing clamp 140: height 140 cm, clamping length 50 cm.



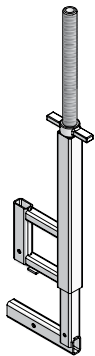
Ref. No.	Description / Application	m ²	kg
29-107-20	Railing clamp 100	6.0	
29-107-25	Railing clamp 140	9.4	



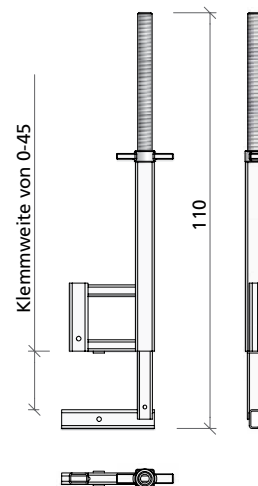
The number in parentheses refer to railing clamp 140

Clamp for guard-railing post

Galvanized. The sliding part with spindle is suited for all common MEVA guard-railing posts (round and square). Adjustment range 0 to 45 cm. Application: stop ends at slab edges and parapets.

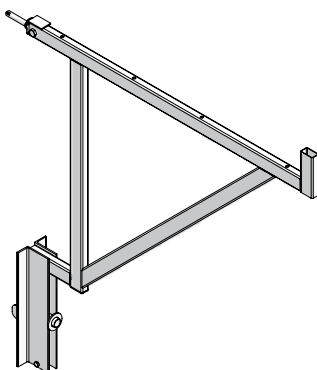


Ref. No.	Description / Application	m ²	kg
29-107-35 Clamp for guard-railing post	9.8

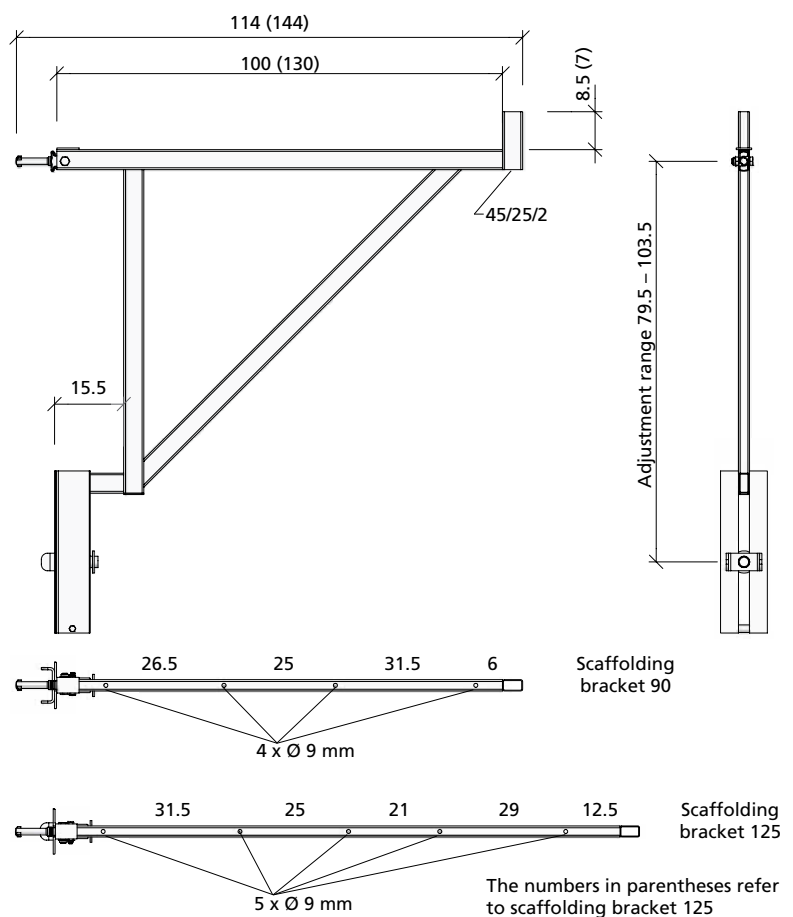


Scaffolding bracket

Galvanized, yellow, pluggable. Is used as a working and safety scaffold. Is attached to the multi-function profile below with a flange screw 18. The planking can be mounted to the brackets. Working width approx. 90 cm (125 cm). A MEVA guard-railing post is required in addition. Bracket spacing depends on the type of planking (according to DIN 4420).



Ref. No.	Description / Application	m ²	kg
29-106-00 Scaffolding bracket 90 (yellow), galv.	10.0
29-106-50 Scaffolding bracket 125 (yellow), galv.	11.5

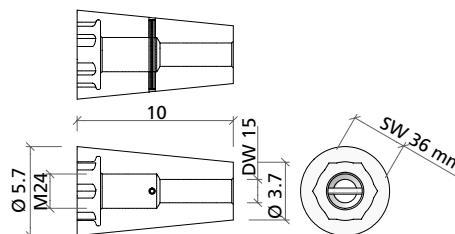


Climbing cone 15/M24

Provides a suspension point for the climbing scaffold. Serves as a positioning and climbing cone. Load capacity depends on ties and concrete quality. Suited for anchor plates 15/120 and 15/170.



Ref. No.	Description / Application	m ²	kg
29-412-70	Climbing cone 15/M24		1.0

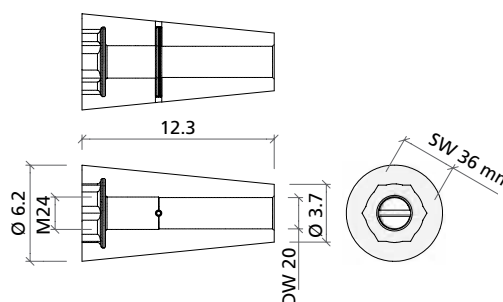


Climbing cone 20/M24

Yellow chromated. Provides a suspension point for the climbing scaffold. Serves as a positioning and climbing cone. Load capacity depends on ties and concrete quality. Suited for anchor plate 20/170.

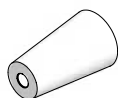


Ref. No.	Description / Application	m ²	kg
29-412-75	Climbing cone 20/M24		1.3

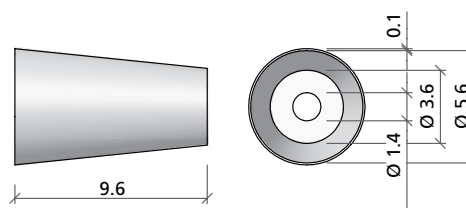


Conical sleeve

Suited for climbing cone 15/M24. Is slipped over the climbing cone before pouring and this way eases removing the climbing cone from the set concrete.

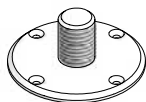


Ref. No.	Description / Application	m ²	kg
29-412-95	Conical sleeve		

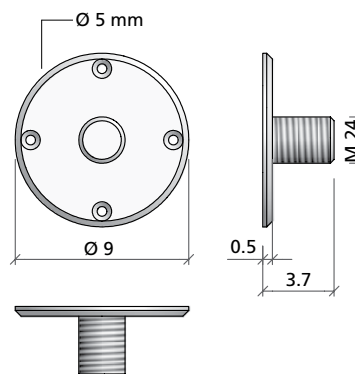


Positioning disc M24

Galvanized. Is used to attach the climbing cone to the facing (4 drill holes with Ø 5 mm). The anchor plate must be secured additionally, e.g. by wiring it to the rebars.



Ref. No.	Description / Application	m ²	kg
29-412-85	Positioning disc M24		0.3

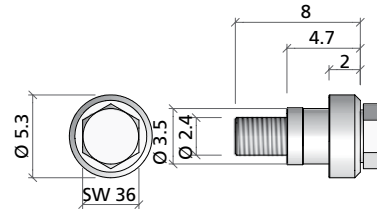


Suspension screw M24

Black, SW 36, with yellow chromated thrust ring. Is used to screw the suspension shoe to the climbing cone.

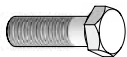


Ref. No.	Description / Application	m ²	kg
29-412-80	Suspension screw M24	0.8	

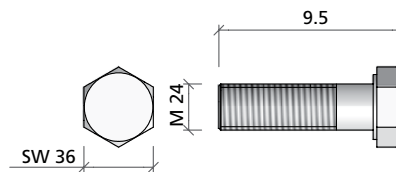


Hexagonal screw M24x80, 10.9

Black, SW 36. Is used to attach climbing cones to the facing. Is used instead of positioning disc M24 if facing can be drilled. A washer M24 is also required.



Ref. No.	Description / Application	m ²	kg
63-119-53	Hexagonal screw M24x80, 10.9 black DIN 931		

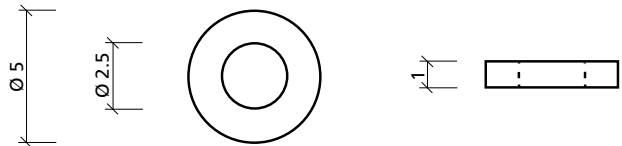


Washer M24, DIN 7349-25

Galvanized. Is required when attaching climbing cones with hexagonal screws M24x80 or safety eyes with hexagonal screws M24x50. Washer is 10 mm thick.

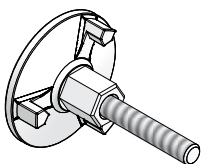
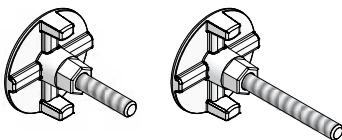


Ref. No.	Description / Application	m ²	kg
62-030-50	Washer M24, galv., DIN 7349-25		
29-412-78	Washer D40xD26x4, galv., DIN 1440-26		

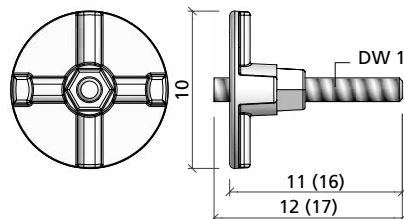


Anchor plate

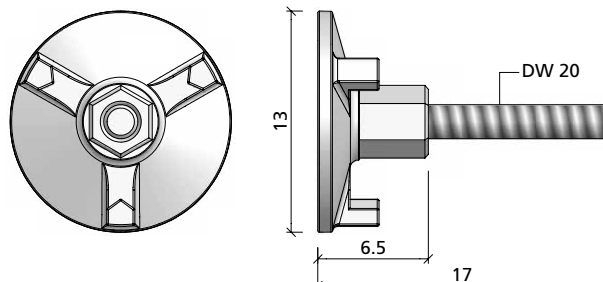
Uncoated. Is used to anchor climbing cones in the concrete. The admissible load capacity depends on the installation depth of the anchor plate and concrete strength at the time of loading (see approval No. 21.6-1751 by the DIBt [German Institute for Construction Technology]).



Ref. No.	Description / Application	m ²	kg
29-412-30	Anchor plate 15/120	0.8	
29-412-35	Anchor plate 15/170	0.9	
29-412-37	Anchor plate 20/170	1.9	

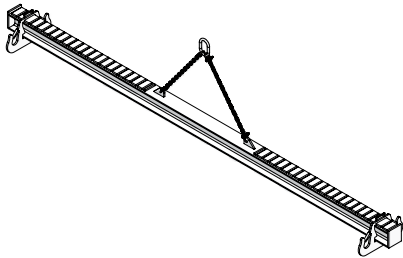


The numbers in parentheses refer to anchor plate 15/170

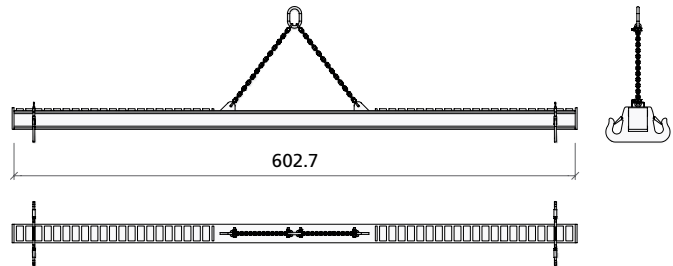


Transport spreader KLK

Coated. Is used to move complete climbing scaffold units (width 2.35–6.00 m). Max. load capacity is 5 tons. Also required: 4 lifting chains which can be cut to length.

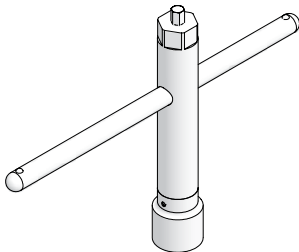


Ref. No.	Description / Application	m ²	kg
29-412-45	Transport spreader KLK		520.0
29-412-42	Chain for transport spreader KLK		21.5

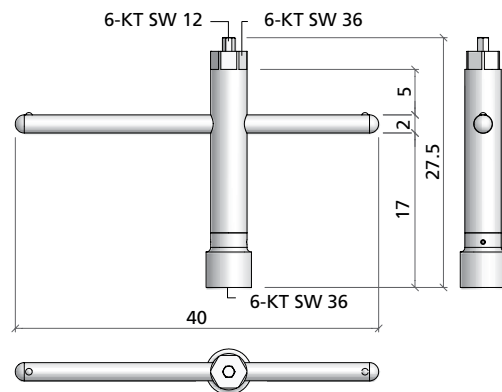


Combination spanner

Is used to remove the climbing cones (internal hexagon, SW 36) and positioning discs (internal hexagon, SW 12) as well as to operate suspension screws M24 (SW 36).

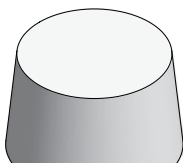


Ref. No.	Description / Application	m ²	kg
29-411-85	Combination spanner		4.3

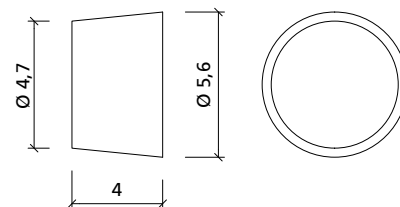


Concrete cone 56 x 40

Closes the holes in the concrete when climbing cones have been removed. Is used with concrete glue (A + B) which is sufficient for approx. 150 concrete cones.

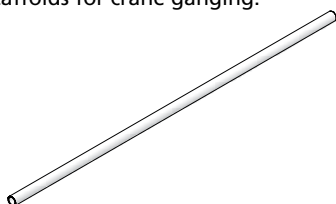


Ref. No.	Description / Application	m ²	kg
29-412-67	Concrete cone 56 x 40		0.3
53-210-70	Concrete glue (A + B)		3.0



Scaffold tube

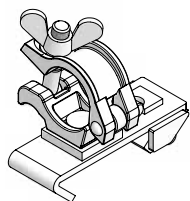
Galvanized. Is used to reinforce large-size units of support frames or climbing scaffolds for crane ganging.



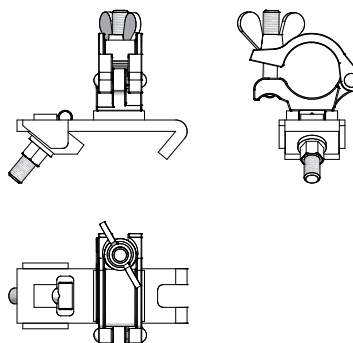
Ref. No.	Description / Application	m ²	kg
29-412-23	Scaffold tube 48/200		9.4
29-412-26	Scaffold tube 48/300		14.1
29-412-27	Scaffold tube 48/400		18.8
29-412-25	Scaffold tube 48/500		23.5
29-412-28	Scaffold tube 48/600		28.2

Swivel-tube coupler 48

Galvanized. Is used to mount scaffold tubes \varnothing 48.3 mm in order to fasten protective nets.

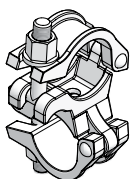


Ref. No.	Description / Application	m ²	kg
29-412-48	Swivel tube coupler 48.....		1.6

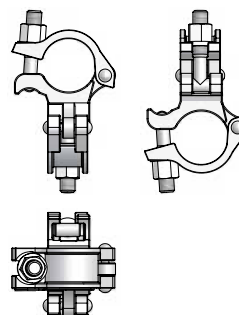


Rigid coupler 48/48

Galvanized. Connects 2 scaffold tubes with \varnothing 48.3 mm at an angle of 90° (SW 22).

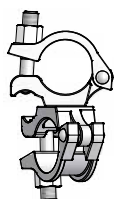


Ref. No.	Description / Application	m ²	kg
29-412-50	Rigid coupler 48/48.....		1.1

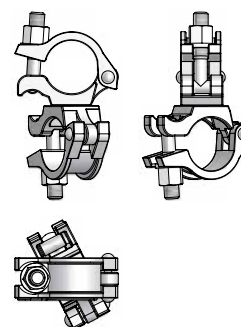


Swivel-joint coupler 48/48

Galvanized. Connects two scaffold tubes with \varnothing 48.3 mm at any angle.

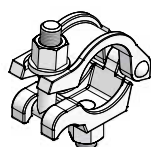


Ref. No.	Description / Application	m ²	kg
29-412-52	Swivel-joint coupler 48/48.....		1.2

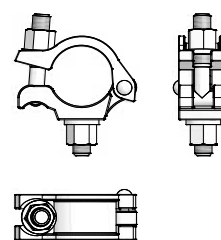


Bolt-on coupler 48/M14

Galvanized. Connects scaffold tubes with \varnothing 48.3 mm to the support frame, scaffolding bracket, etc.

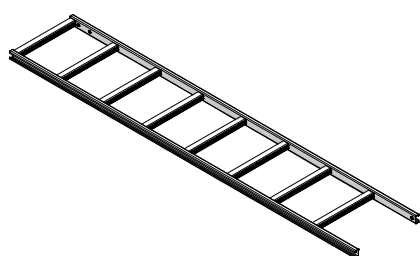


Ref. No.	Description / Application	m ²	kg
40-080-70	Bolt-on coupler 48/M14.....		0.6

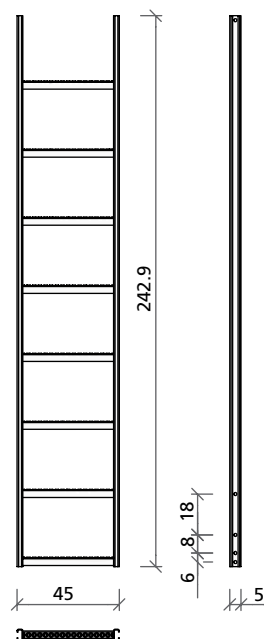


Ladder

Galvanized. Provides access to the secondary platforms. Is attached to the access hatch KLK. Attachment to the climbing bracket is achieved with ladder fixtures. Can be extended with extension ladders. Safety cages are required for operational safety.



Ref. No.	Description / Application	m ²	kg
29-414-50	Ladder 348	23.2	
29-414-55	Ladder 318	21.1	
29-416-50	Ladder 243	17.2	

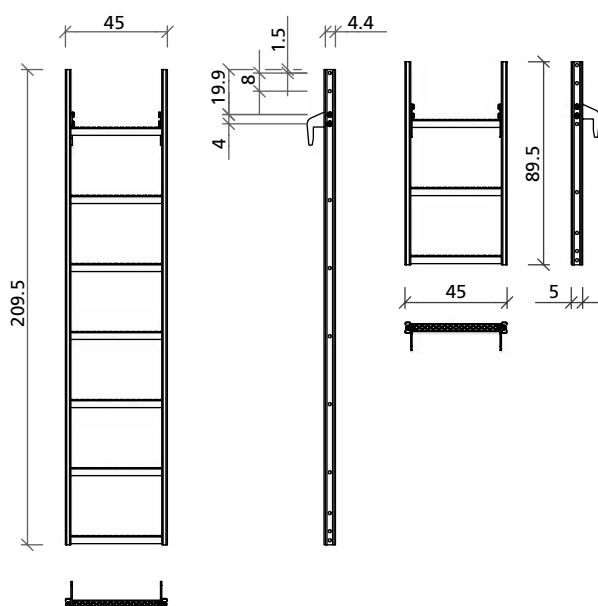


Extension ladder

Galvanized. For height extension. Is attached to the ladder by using the ladder link KLK. The extension ladder must be secured with ladder fixture KLK. Additional extension in increments of 30 cm by hooking an extension ladder into the appropriate step.

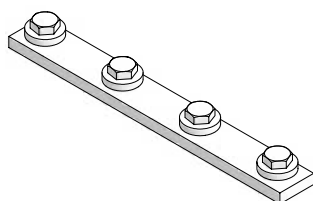


Ref. No.	Description / Application	m ²	kg
29-414-60	Extension ladder 210	15.9	
29-416-60	Extension ladder 90	7.4	
29-416-62	Extension ladder 60	4.4	

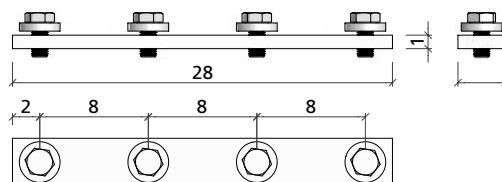


Ladder connector

Galvanized. Connects 2 ladders at the joint without the need to hook one ladder into a step of the other.



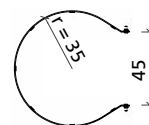
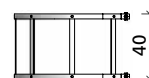
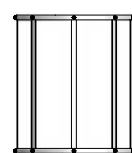
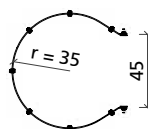
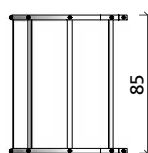
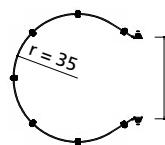
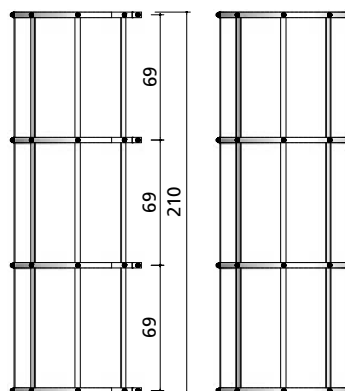
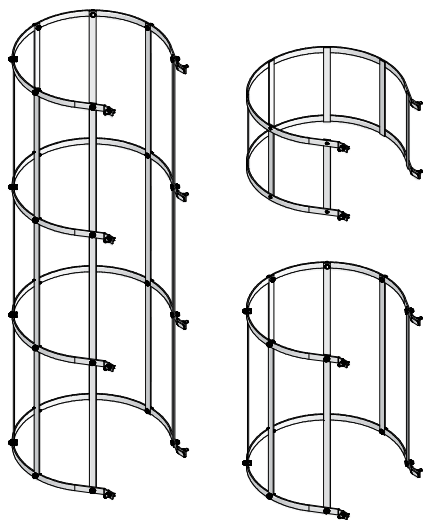
Ref. No.	Description / Application	m ²	kg
29-414-70	Ladder connector	1.0	



Safety cage

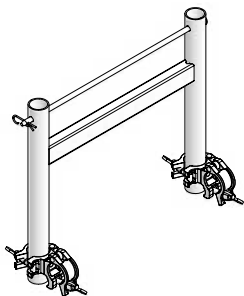
Galvanized. Internal Ø 70 cm. Protects workers when ascending and descending. The safety cages are attached to the ladders or extension ladders with the integrated hammerhead screws.

Ref. No.	Description / Application	m ²	kg
29-414-85	Safety cage 210	27.9	
29-414-90	Safety cage 85	12.0	
29-416-90	Safety cage 40	8.2	

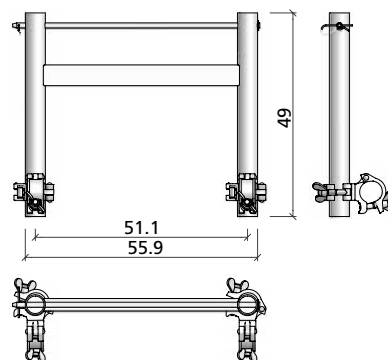


Ladder fixture KLK

Galvanized. Is attached to the scaffold tube units of the climbing scaffold with the integrated coupler. The ladder is secured to the ladder fixture with a long pin.

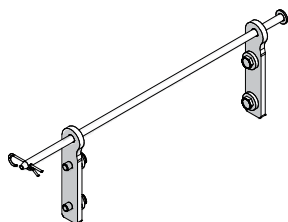


Ref. No.	Description / Application	m ²	kg
29-416-65	Ladder fixture KLK	7.4	

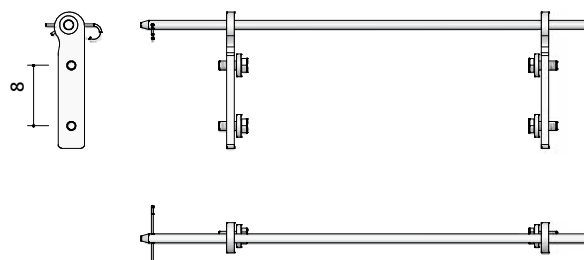


Ladder link set KLK

Galvanized. Connects 2 ladders in the transition from straight ladder to tilted ladder.

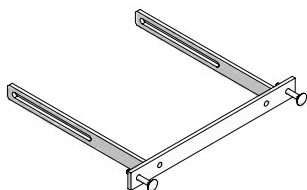


Ref. No.	Description / Application	m ²	kg
29-416-72	Ladder link set KLK	1.8	

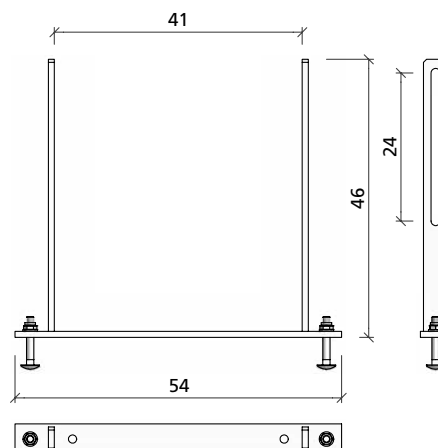


Ladder base KLK

Galvanized. Is used to attach the ladder at its bottom with 2 bolts M12x80 to the planking (45 mm). Has a 24 cm long hole to allow for height adjustment.

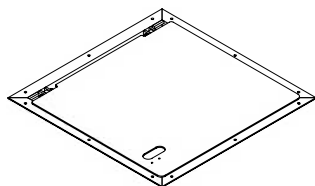


Ref. No.	Description / Application	m ²	kg
29-416-70	Ladder base KLK	4.6	

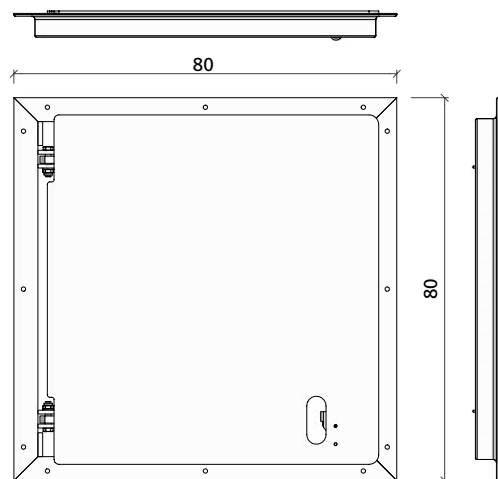


Access hatch KLK

Galvanized steel frame. Hatch made from checker plate. max. opening 88°, self-closing.



Ref. No.	Description / Application	m ²	kg
29-416-05	Access hatch KLK	22.3	



KLK 230 UK

Side protection with scaffold tubes.

Ref. No.	Description / Application	m ²	kg
29-411-01	Climbing bracket KLK 230 (UK)	174.5	
29-411-79	Guard-railing post KLK 230 UK	7.7	
29-411-18	Bracket extension 220 UK	59.5	

Guard-railing post UK

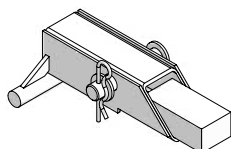
Galvanized. With manifold to be plugged into the scaffolding bracket and with 48 mm Ø tube to attach tube couplers.



Ref. No.	Description / Application	m ²	kg
29-106-80	Guard-railing post 48/120 (UK), galv.	5.5	
29-920-80	Guard-railing post 48/134	5.5	

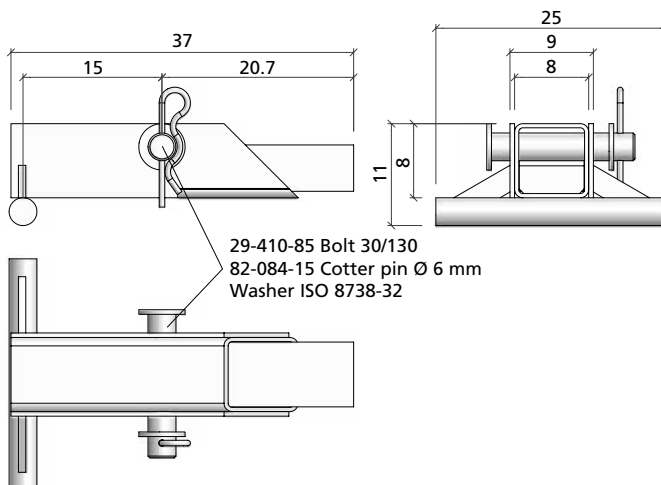
Folding suspension

Coated. Is hooked into the suspension shoe. Two folding suspensions are required per steel girder of a shaft platform.



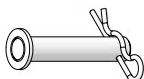
Ref. No.	Description / Application	m ²	kg
----------	---------------------------	----------------	----

29-410-80	Folding suspension		11.8
-----------	--------------------	--	------



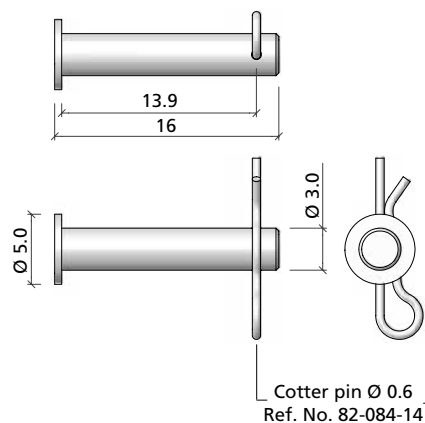
Bolt 30/130

Galvanized. With cotter pin 6. Is used to fasten the crane eye to the shaft platform girder with a bolt 30/130.



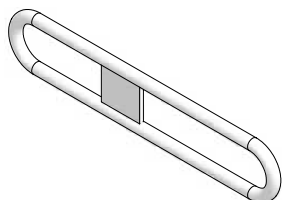
Ref. No.	Description / Application	m ²	kg
----------	---------------------------	----------------	----

29-410-85	Bolt 30/130 (with cotter pin)		1.0
-----------	-------------------------------	--	-----



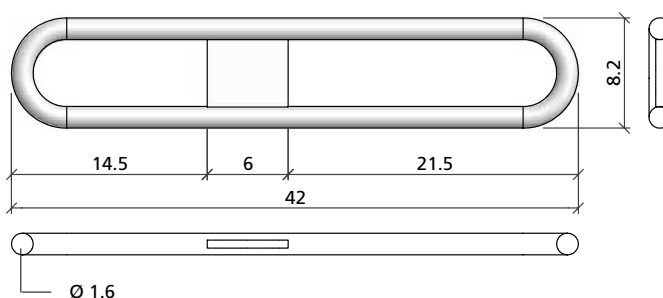
Crane eye

Galvanized. Is bolted to the shaft platform girder with a bolt 30/130. The bolt must be ordered separately.



Ref. No.	Description / Application	m ²	kg
----------	---------------------------	----------------	----

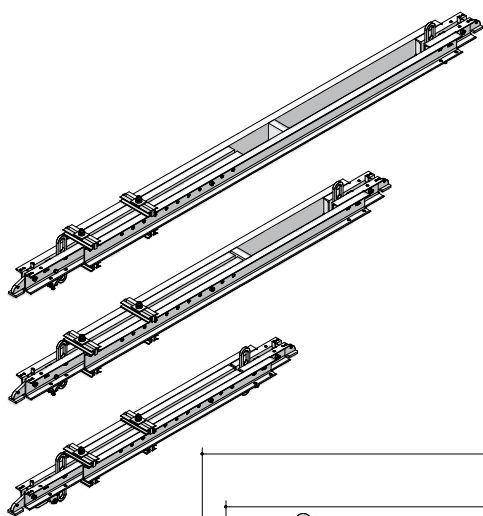
29-410-90	Crane eye		1.6
-----------	-----------	--	-----



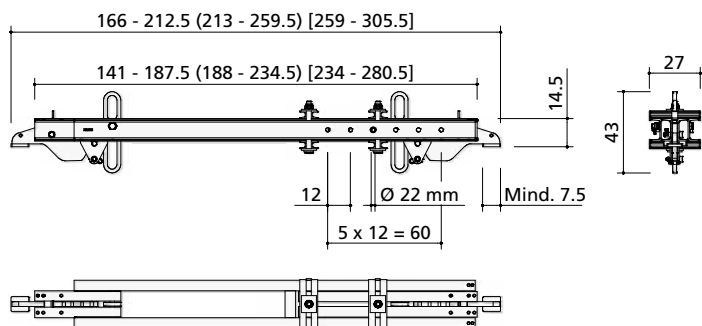
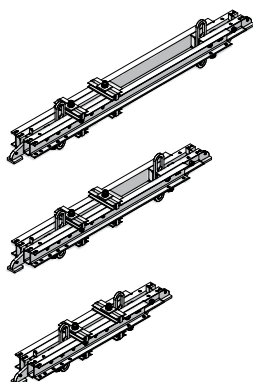
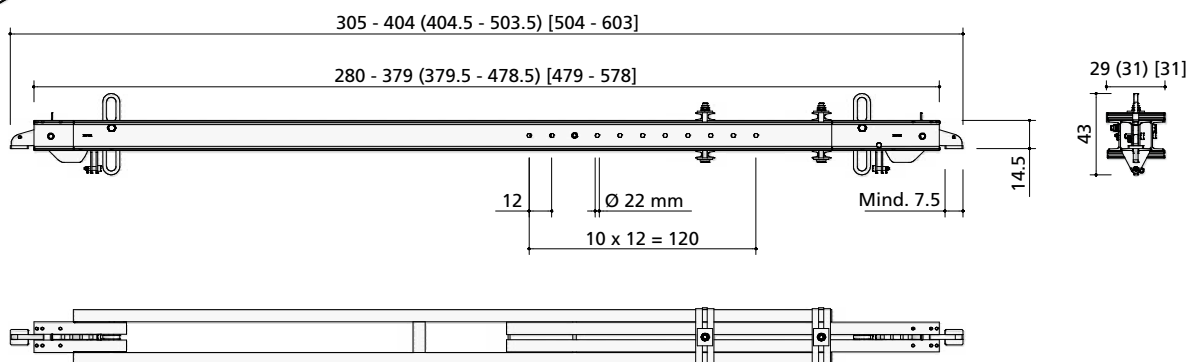
Shaft platform girder

Galvanized. Telescopic. 6 shaft platform girders with different lengths are available for shaft openings from 1.41 m to 5.78 m. The max. admissible working load is 200 kN/m² for symmetrical platforms.

Ref. No.	Description / Application	m ²	kg
29-150-70	Shaft platform girder 4840 - 5830	318.7	
29-150-60	Shaft platform girder 3850 - 4840	280.0	
29-150-50	Shaft platform girder 2870 - 3860	208.7	
29-150-40	Shaft platform girder 2390 - 2860	148.5	
29-150-30	Shaft platform girder 1930 - 2400	136.0	
29-150-20	Shaft platform girder 1460 - 1930	121.0	



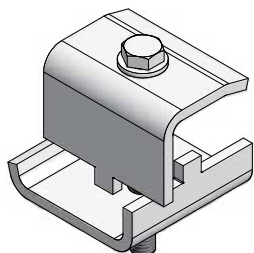
The figures outside parentheses refer to shaft platform girder 1460 - 1930. The figures in () parentheses refer to shaft platform 1930 - 2400 and those in [] parentheses to shaft platform girder 2390 - 2860.



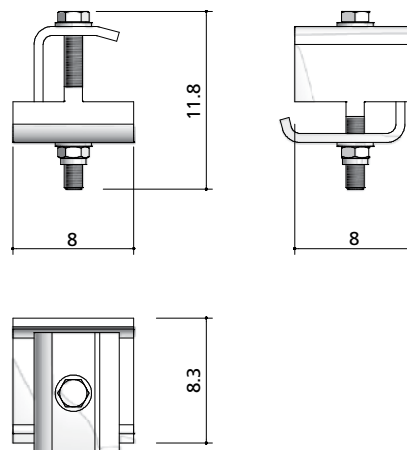
The figures outside parentheses refer to shaft platform girder 2850 - 3840. The figures in () parentheses refer to shaft platform girder 3850 - 4840 and those in [] parentheses to shaft platform girder 4840 - 5830.

Beam clamp H20

Galvanized. Is used to attach H20 girders to the shaft platform girders.

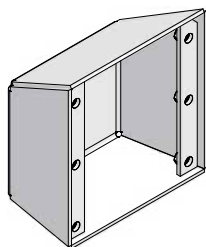


Ref. No.	Description / Application	m ²	kg
29-411-62	Beam clamp H20	0.9	

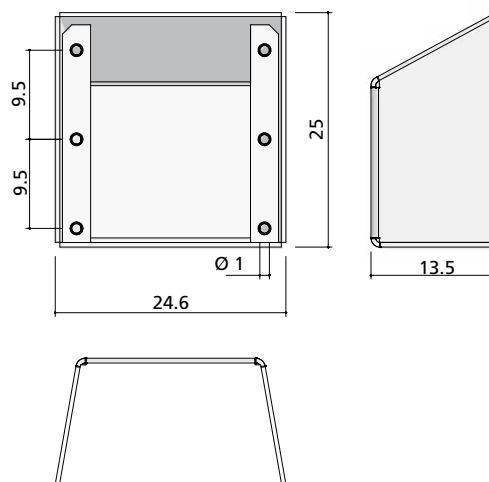


Bearing pocket

Coated. Is used to form a pocket for the shaft platform girder. A minimum concrete strength of 15 N/mm² is required when installing the shaft platform girder. The integrated hexagonal nut has thread size M12.

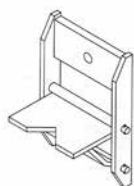


Ref. No.	Description / Application	m ²	kg
29-151-80	Bearing pocket	6.5	



Shaft folding bearing plate

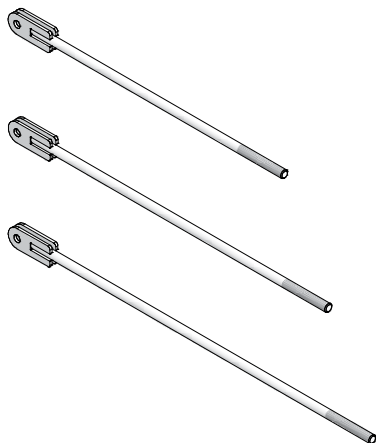
Coated. Supports wooden or steel shaft girders. Admissible load capacity is 25 kN.



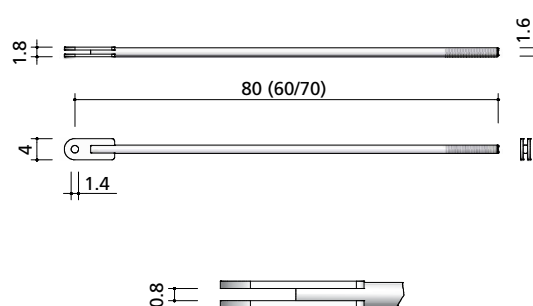
Ref. No.	Description / Application	m ²	kg
29-410-20	Shaft folding bearing plate	12.6	

Threaded rod LH

Steel. Galvanized and yellow chromated for distinction from threaded rods with right-handed thread (RH). Ø 16 mm. With a 10 cm long left-handed LH thread M16. Together with turnbuckle nuts M16 and attached to L steel angles, the threaded rods LH and RH are used to diagonally brace the platform units. Attachment with hexagonal screws M12x40 and hexagonal nuts M12.



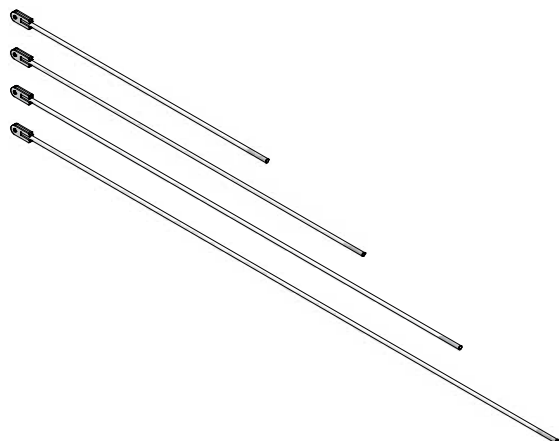
Ref. No.	Description / Application	m ²	kg
29-009-10	Threaded rod 60-LH (yellow / blue head)	1.0	
29-009-15	Threaded rod 70-LH (yellow / red head)	1.3	
29-009-20	Threaded rod 80-LH (yellow)	1.5	



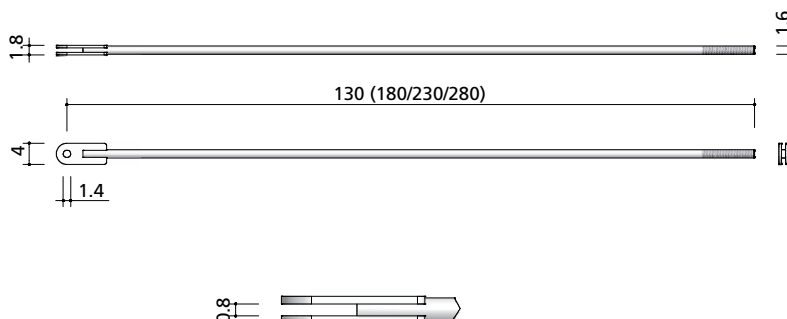
Die Zahlen in der Klammer betreffen die Gewindestangen 60 und 70 LH.

Threaded rod RH

Steel. Galvanized, silver colour. Ø 16 mm. With a 10 cm long right-handed LH thread M16. Together with turnbuckle nuts M16 and attached to L steel angles, the threaded rods LH and RH are used to diagonally brace the platform units. Attachment with hexagonal screws M12x40 and hexagonal nuts M12.



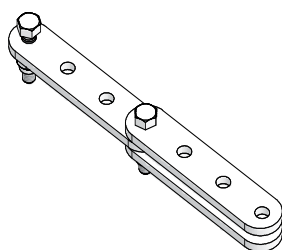
Ref. No.	Description / Application	m ²	kg
29-009-40	Threaded rod 130-RH (silver / red head)	2.3	
29-009-50	Threaded rod 180-RH (silver / yellow head)	3.1	
29-009-60	Threaded rod 230-RH (silver / green head)	3.9	
29-009-70	Threaded rod 280-RH (silver)	4.7	



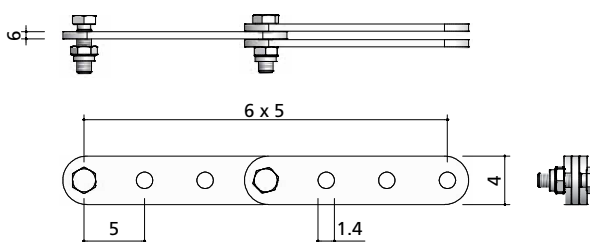
The numbers in parentheses refer to threaded rods RH 180, 230 and 280.

Tension rod extension

Galvanized flat steel construction.
Allows the tension rods to be extended
by 20 to 30 cm in increments of 5 cm.
Several extensions can be used for the
same tension rod. The ledger contains
the connecting parts.

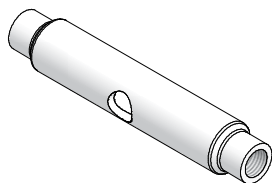


Ref. No.	Description / Application	m ²	kg
29-009-90 Tension rod extension MGC		1.1

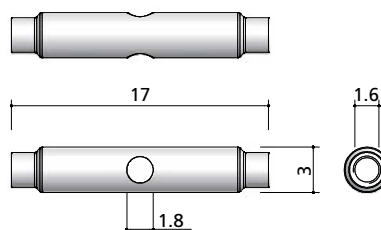


Turnbuckle nut M16

Steel, galvanized. Is screwed onto the
M16 thread. Connects the threaded
rods LH and RH, also tensions the
tension rod built with the threaded
rods. Adjustment range: 10 cm.



Ref. No.	Description / Application	m ²	kg
29-009-95 Turnbuckle nut M16 MGC		0.4



Notes



Headquarters

MEVA Schalungs-Systeme GmbH
Industriestrasse 5
D-72221 Haiterbach
Tel. +49 7456 692-01
Fax +49 7456 692-66
info@meva-international.com
www.meva-international.com

Logistics Centers

A-Pfaffsttten, Tel. +43 2252 20900-0
D-Berlin, Tel. +49 3375 9030-0
D-Haiterbach, Tel. +49 7456 692-01
D-Hannover, Tel. +49 511 94993-0
GB-Tamworth, Tel. +44 1827 60217
H-Budapest, Tel. +36 1 2722222
RO-Bucuresti, Tel. +40 21 2066460
RUS-Moskva, Tel. +7 495 7813737
USA-Springfield, Tel. +1 937 3280022

International Sales & Service

A-Pfaffsttten, Tel. 02252 20900-0
AUS-Adelaide, Tel. 08 82634377
B-Kruike, Tel. 03 250 11 11
CDN-Toronto, Tel. 416 5766397
CH-Seon, Tel. 062 7697100
CO-Bogot, Tel. 01 5204236
F-Sarrequemines, Tel. 0387 959938
GB-Tamworth, Tel. 01827 60217
H-Budapest, Tel. 01 2722222
HR-Bestovje, Tel. 013 323 666
IND-Mumbai, Tel. 022 27563430
LT-Kaunas, Tel. 0684 82795
MAL-Perak, Tel. 12 5209337
N-Oslo, Tel. 067 154200
NL-Gouda, Tel. 0182 570770
PA-Panama City 507 2372222
PL-Bialystok, Tel. 085 6768159
RO-Bucuresti, Tel. 021 2066460
RUS-Moskva, Tel. 495 7813737
RUS-Sankt-Peterburg, Tel. 812 6802890
SGP-Singapore, Tel. 67354459
SLO-Petrovce, Tel. 03 7131500
UAE-Dubai, Tel. 04 3411180
USA-Springfield, Tel. 937 3280022