



Climbing Formwork Systems

Safety at all heights



KLK 230 Climbing System

Safe and flexible

For multi-functional vertical climbing

The KLK 230 can be used as climbing formwork or as a working platform for rebar placement, formwork set-up, and concrete-pouring work. A trailing platform can be attached to retrieve hardware and concrete finishing.

The KLK 230 climbing bracket is firmly secured to the wall formwork to form a craneable climbing unit. The formwork clamping fixture allows both the height and the inclination of the formwork to be finely adjusted in order to precisely adapt it to the geometry of the building.

The KLK 230 climbing bracket features a 7'-6" deep platform for ample working space. The formwork can be rolled back 2'-3" by using a slide carriage, creating sufficient area to perform cleaning and installing rebar, inserts, and box-outs.



The KLK 230 climbing platform consists of climbing brackets, wall struts, planking, and handrails.



i

Simple. Smart.

- **When the optional slide carriage is used:**
 - The carriage can be slid back 2'-3" to provide ample working space for cleaning and rebar installation
 - Wall formwork and KLK can be lifted together as one unit, saving valuable crane time
- **Working platform with a 7'-6" depth**
 - Safe and comfortable work at all heights
- **Integrated formwork support for fast and safe connection to the wall formwork with assembly locks**
- **The KLK can also be used without the slide carriage to create a simple work platform**

The Rail-guided MGC-F Climbing System

Safe work at all heights

Rail-guided lifting by crane

Safe and efficient assembly directly from the truck

Thanks to the MGC-F's innovative design, the units can arrive at the job site preassembled and ready to be flown directly onto the wall; saving time, space, and labor.

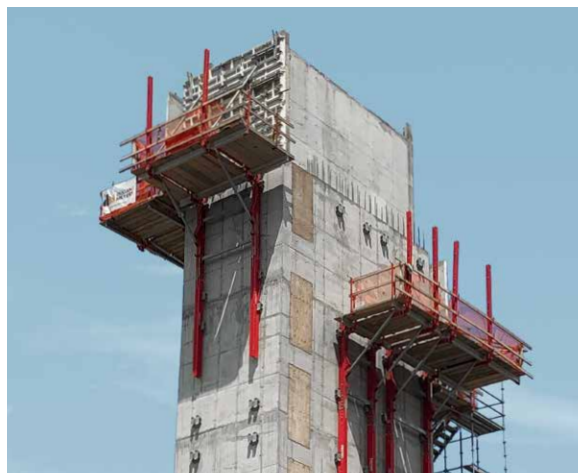
Extensions and trailing platforms installed from below

When the climbing unit has been installed on the building, the extensions, trailing platforms, and access ladders are also installed from below. This increases the safety of the system and the efficiency during assembly.

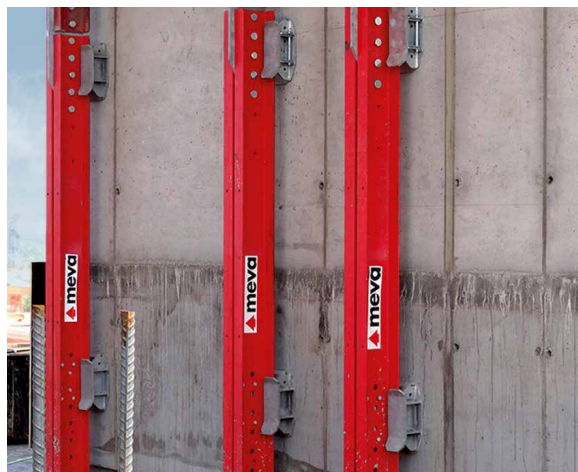
MGC-F and wall formwork – always a safe unit

The MGC-F and the wall formwork always form a single unit. The use of guide rails and guide shoes ensures that it remains firmly anchored to the building even under windy conditions – during both the construction phase and the climbing phase.





Even complex geometries with different sizes and offset structural elements can be easily achieved using the MGC-F guided climbing system.



Climbing shoes secure the guiding rails to the building at all times, during both the construction phase and the climbing phase.

i

Simple. Smart.

- **Lifting process by crane**
 - Provides for flexibility and efficiency
- **Guide rails can be placed at widths from 4' to 14'**
- **High degree of safety**
 - Fully integrated access ladders with safety cages
- **Preassembly of the platforms eliminates the need for job site build space and labor**
- **Can be flown onto and off the wall in a single pick**
- **Safe work in all weather conditions increases productivity**
- **No need to disassemble the platform before it is returned from the job site**
- **All-in-one-solution**
 - MGC-F in conjunction with MGS provides for optimum safety and efficient construction processes

The Rail-guided MGS Screen System

Total protection at all heights

Rail-guided climbing, hydraulically or by crane.

The rail-guided MGS screen system (MEVA Guided Screens) provides a complete perimeter enclosure for the active levels of construction located at the top of the building which can be lifted to the next level by crane or by using hydraulics. This system was specifically designed for use in high rise construction.

MEVA's guided screen system (MGS) confines and protects the active working areas during construction. Maximum safety is guaranteed during all phases of construction and the enclosure allows work to continue in most weather conditions. MGS remains connected to the building throughout construction and can be attached to either the slab or the wall.

The system is adaptable to even the most complicated building geometries and sizes. Even large-format units can be advanced quickly and safely in one lift to the next level. There are multiple screening types available. Perforated or unperforated cladding sheets can be provided, or the system may be assembled with your choice of suitable custom mesh or screen.

Safe and quick assembly

MGS can be assembled safely at ground level or delivered completely preassembled to the job site, saving time, labor, and space in confined and heavily populated construction conditions.

Ergonomic

The MGS-H option features lightweight hydraulic cylinders, a mobile hydraulic unit, and guide shoes that weigh just 44 lbs, making the assembly faster and easier for workers.



Simple. Smart.

- **System with individual units**
 - Flexible adaptation to the floor plan and the geometry
 - Free positioning of the guide rails
 - Economical solution for almost all buildings due to flexible widths
- **Safe and time-saving preassembly**
 - On the ground
 - Delivery of preassembled components possible
- **Ergonomic work thanks to weight-optimized components**
- **All-in-one-solution**
 - MGS in conjunction with MGC-F provides for optimum safety and efficient construction processes



Platforms are protected against the wind during both the construction phase and the climbing phase

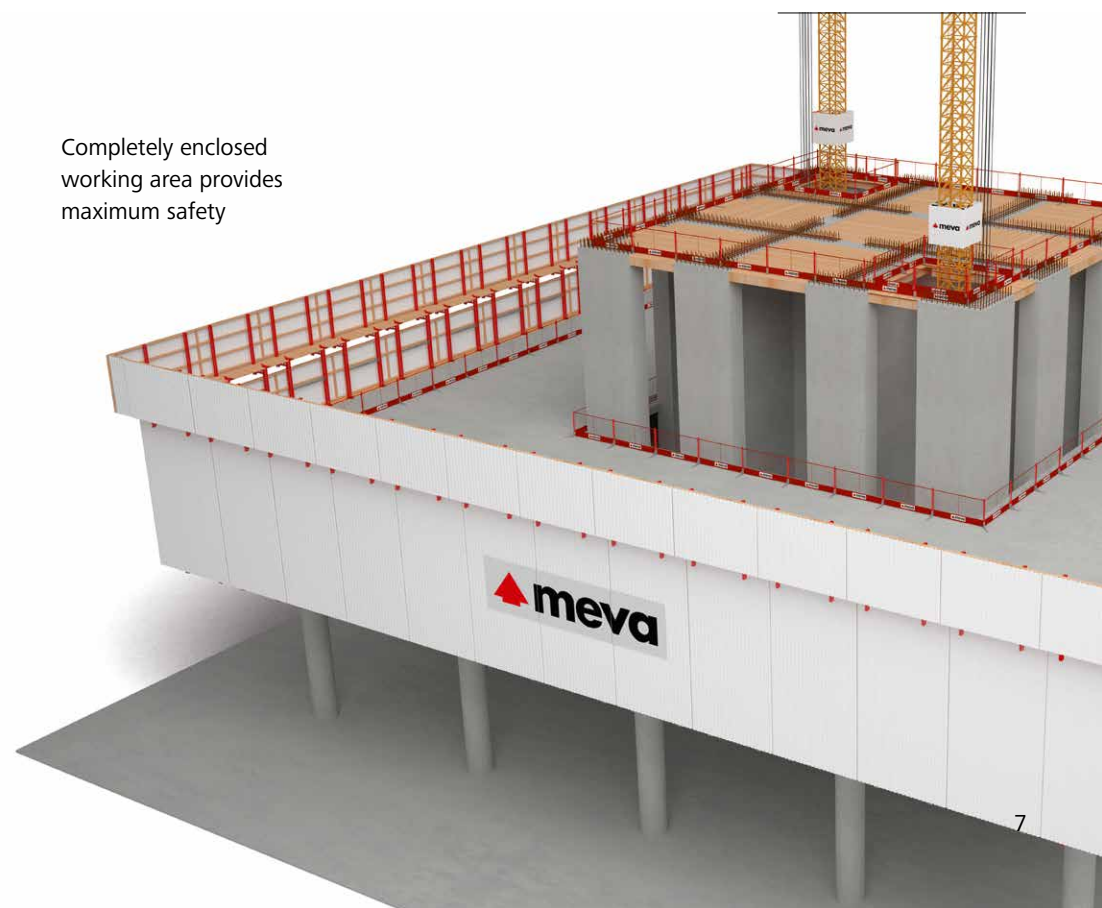


There are two options for advancing the screens to the next level: lifting by crane or by hydraulics



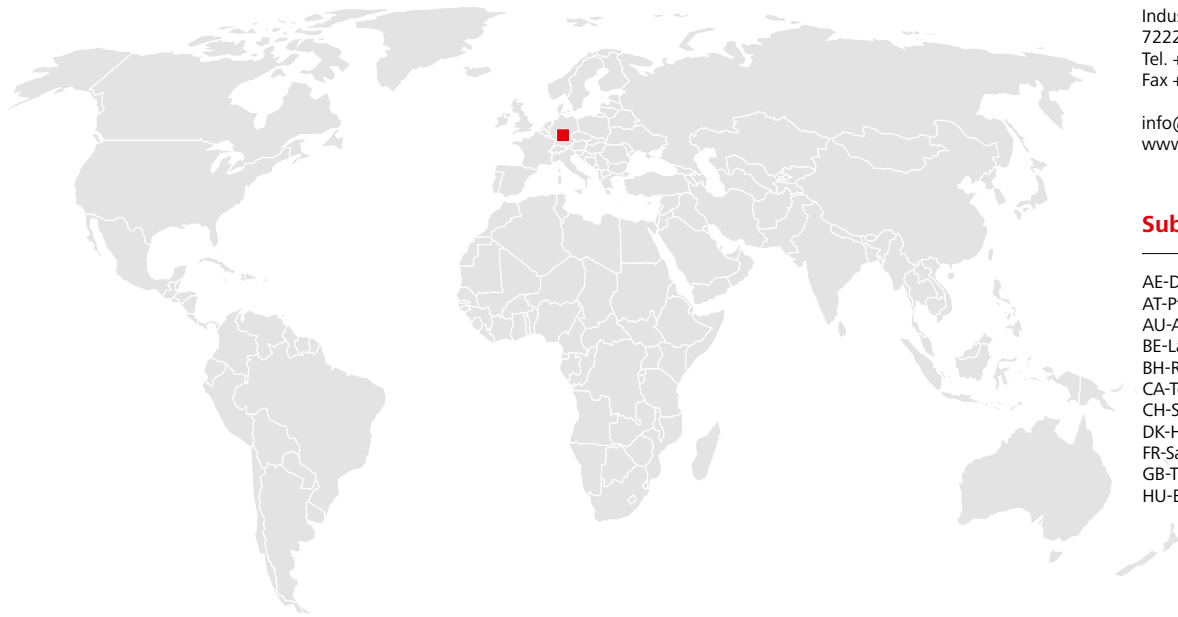
Maximum flexibility and simplified suspension through folding mechanism and adjustable guide shoe

Completely enclosed working area provides maximum safety



You can rely on us wherever you are.

With 40 offices on 5 continents, we are
on the spot wherever you need us.



MEVA Schalungs-Systeme GmbH

Industriestrasse 5 Tel. +49 7456 692-01
72221 Haiterbach Fax +49 7456 692-66
Germany info@meva.net

www.meva.net

MEVA North America

MEVA Formwork Systems, Inc.
2000 Airpark Dr.
Springfield, OH 45502
United States of America
Tel. +1 937 328 0022
Fax +1 937 328 0044

Southeast Distribution Center
298 Commercial Road
Spartanburg, SC 29303

info@mevaformwork.com
www.mevaformwork.com

Headquarters (Germany)

MEVA Schalungs-Systeme GmbH
Industriestrasse 5
72221 Haiterbach
Tel. +49 7456 692-01
Fax +49 7456 692-66

info@meva.net
www.meva.net

Subsidiaries/international bases

AE-Dubai	Tel. +971 4 8042200	IN-Mumbai	Tel. +91 22 27563430
AT-Pfaffstätten	Tel. +43 2252 20900-0	LATAM	latam@meva.net
AU-Adelaide	Tel. +61 8 82634377	LU-Rodange	Tel. +352 20 283747
BE-Landen	Tel. +32 11 717040	MA-Casablanca	Tel. +212 684-602243
BH-Riffa	Tel. +973 3322 4290	MY-Perak	Tel. +60 12 5209337
CA-Toronto	Tel. +1 416 8565560	NL-Gouda	Tel. +31 182 570770
CH-Seon	Tel. +41 62 7697100	NO-Oslo	Tel. +47 67 154200
DK-Holbæk	Tel. +45 56 311855	PA-Panama City	Tel. +507 2372222
FR-Sarreguemines	Tel. +33 387 959938	PH-Manila	Tel. +63 998 5416975
GB-Tamworth	Tel. +44 1827 60217	QA-Doha	Tel. +974 4006 8485
HU-Budapest	Tel. +36 1 2722222	SG-Singapore	Tel. +65 67354459
		US-Springfield	Tel. +1 937 3280022