

FormworkPress

Professional Formwork News

XII/2025



Remarkable results

Water reservoir built with AluFix and EcoFix – p. 14

Contents

Editorial	3
News	
Information about MEVA	4
Let us know what you think.....	5
That was MEVA55	6
High-rise projects around the world with MAC	8
XFORM – the new brand for used formwork	10
MonoFix proves itself in Panama	12
Cover story	
Pumping station and water reservoir.....	14
MEVA enters the Uruguayan market	17
MAC speeds up high-rise construction progress in India.....	18

Imprint

Site photos show situations which do not always depict the final assembly of formwork with regard to safety regulations. Imprint: Edition XII/2025. Publisher: MEVA Schalungs-Systeme GmbH, Industriestr. 5, D-72221 Haiterbach. Layout: MEVA. We accept no liability for the content of external internet sites, nor for a violation of privacy or any other law arising from these.

“The end of the year is an opportunity to look back on our achievements with pride and at the same time to renew our motivation for the coming year.”

Dear Readers,

When a year is coming to an end, it is worth looking back, especially when the year has been as extraordinary as this one. For MEVA, 2025 was dominated by our corporate anniversary celebrations, which were postponed five years ago because of the COVID-19 pandemic. Together with our customers, partners and employees, we were able to celebrate this occasion under the MEVA55 banner over the course of several events. Read about it on page 6. These encounters have again shown us how strong our connections are to all the people who have accompanied us on our journey over the years – and also what an important role personal interaction still plays for long-term innovation.

Innovation was also a core issue in 2025. Our new monolithic formwork systems such as MonoFix are proving successful on numerous construction sites, for example in residential construction in Panama City (p. 12). The positive feedback from the field has strengthened our resolve to boldly continue our current strategy and to consistently focus on our customers’ requirements during our development work.

Speaking of requirements, we would also like to offer you the chance to give us your opinion via our FormworkPress magazine and would be grateful for your participation in our survey (page 5). Why? Because with your input, we will be able to more effectively tailor the quality of our products and services to suit your requirements.

Every construction project has its own character. Particularly impressive, if only because of their sheer size, are the projects described in this issue involving a waterworks with pumping station and reservoir in the Philippines (p. 14) and a high-rise building in India (p. 18). Both construction projects are currently proceeding on schedule. This shows what a difference smart solutions used by competent partners and committed teams make in practical applications.

Where reliability and technological know-how are called for, we are geared up to make a significant contribution. The end of the year is an opportunity to look back on our achievements with pride and at the same time to renew our motivation for the coming year. We look back in gratitude on the successes we have achieved together with you, our customers and partners, and look forward with confidence to the challenges we will face in the future.

Wishing you an inspiring read, a Merry Christmas and a good start in the new year.




Florian F. Dingler,
Owner and Managing Director
of MEVA Schalungs-Systeme GmbH

News

Information about MEVA



Flood protection for Vienna

The Wien River flows sedately towards the eponymous capital city of Austria. However, problems are inevitable if heavy rainfall causes the water level to rise rapidly. To prevent flood damage if the river bursts its banks, retention basins are being built just outside the city with its more than two million inhabitants. The work on the historical weir walls was successfully completed by the construction company GLS using rental Mammut 350 wall formwork.

Thanks to its increased capacity, the existing rain-water overflow installation, the Auhof basin, will be able to handle even larger volumes of water in future. The old weir walls, which have served their purpose for about 120 years, were renovated and heightened over a length of 1,750 m by installing single-sided formwork facing shells. The construction project consisted primarily of an approximately 1,250 m-long and up to 8 m-high separation wall as well as five weir crests with a total length of almost 500 m and heights up to 7.5 m. For the flood defence walls, which were to be formed without tie rods for obvious reasons, GLS used an unusual combination – the Mammut 350 formwork panels were fixed in place using up to 7.5 m-long double U-shaped sections.

Sustainability Report online

MEVA's latest Sustainability Report can be viewed and downloaded with immediate effect on our corporate website. An increasing number of customers, partner companies and interest groups are requesting these documents in order to achieve their own ambitious sustainability goals together with responsible suppliers and partners.

The MEVA Sustainability Report 2025 describes the measures and initiatives taken by our group of companies with regard to sustainable business practices and actions. It enables all interested parties to become more familiar with MEVA and our commitment to the environment and society in general. The document is available in German and English and updated annually.

MEVA's activities are oriented to the 17 Sustainable Development Goals that were agreed by the United Nations (UN) in the 2030 Agenda for Sustainable Development. Corresponding symbols in the report highlight our efforts to promote fair standards, climate protection and social justice worldwide.

MEVA Customer Satisfaction Survey

Let us know what you think

For 55 years now, MEVA has stood for reliable formwork technology, teamwork based on partnership and a firm commitment to quality. The trust placed in us by our customers is both an incentive and an obligation. To enable us to continue developing our products and our services in a targeted manner in future, we would like to involve our customers and partners more actively in the process by means of a simple online questionnaire.

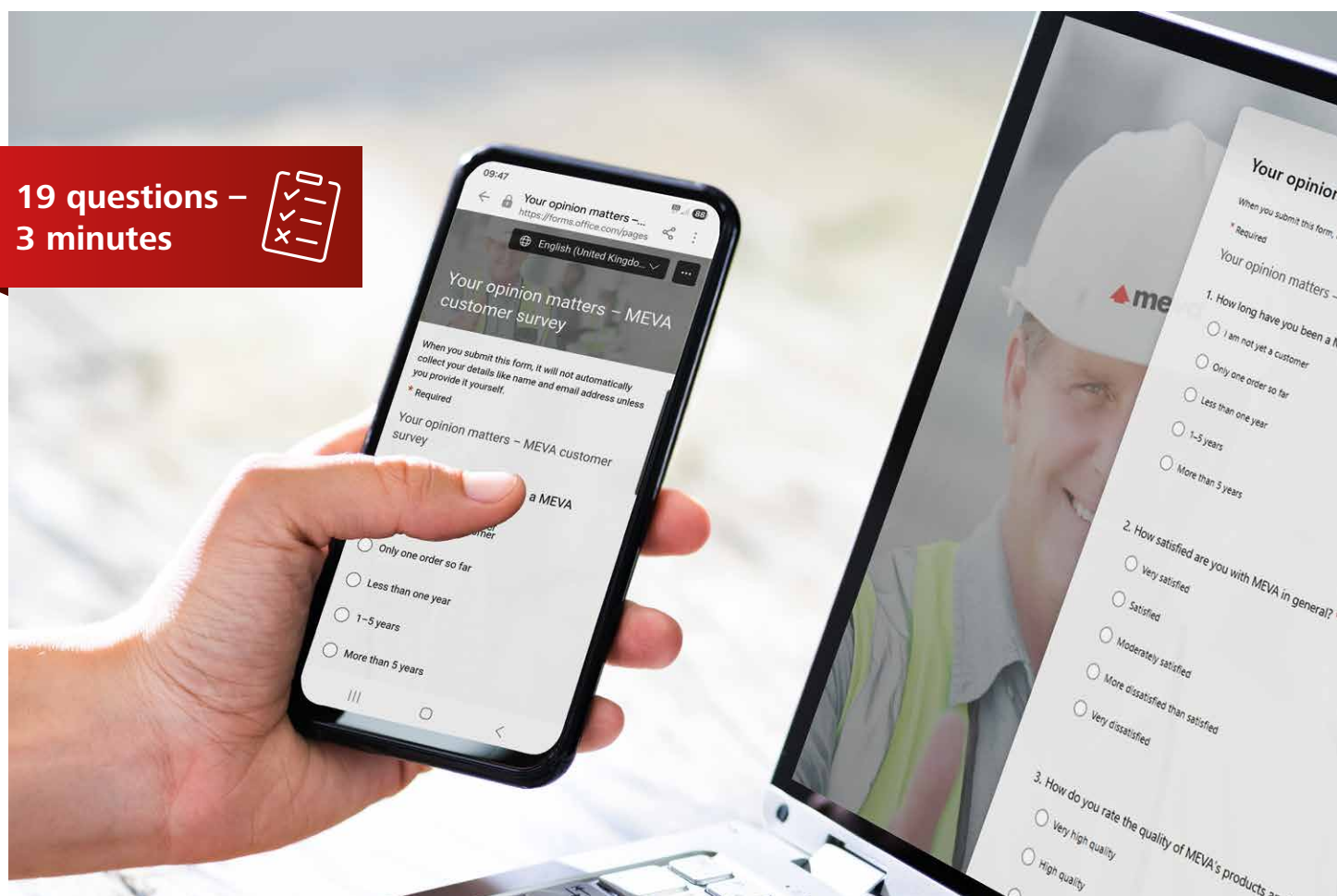
You thus have the opportunity to appraise different aspects of our mutual teamwork ranging from the quality of our products and the reliability of our services to your experiences with your contact persons at MEVA. We would also be interested in hearing your opinion on the working relationship with MEVA in general. Every form of feedback helps us

to further develop our strengths and to recognise optimisation potential at an early stage.

It will take you just a few minutes to fill out the questionnaire. All information provided will, of course, be treated confidentially and used for the sole purpose of improving our offering. We cordially invite you to participate and, together with us, to actively contribute to shaping MEVA's future.

You can take part via one of the following methods:

- The online questionnaire (by clicking on the red button)
- By e-mail to infomanagement@meva.net
- By talking to your personal contact person at MEVA



19 questions –
3 minutes





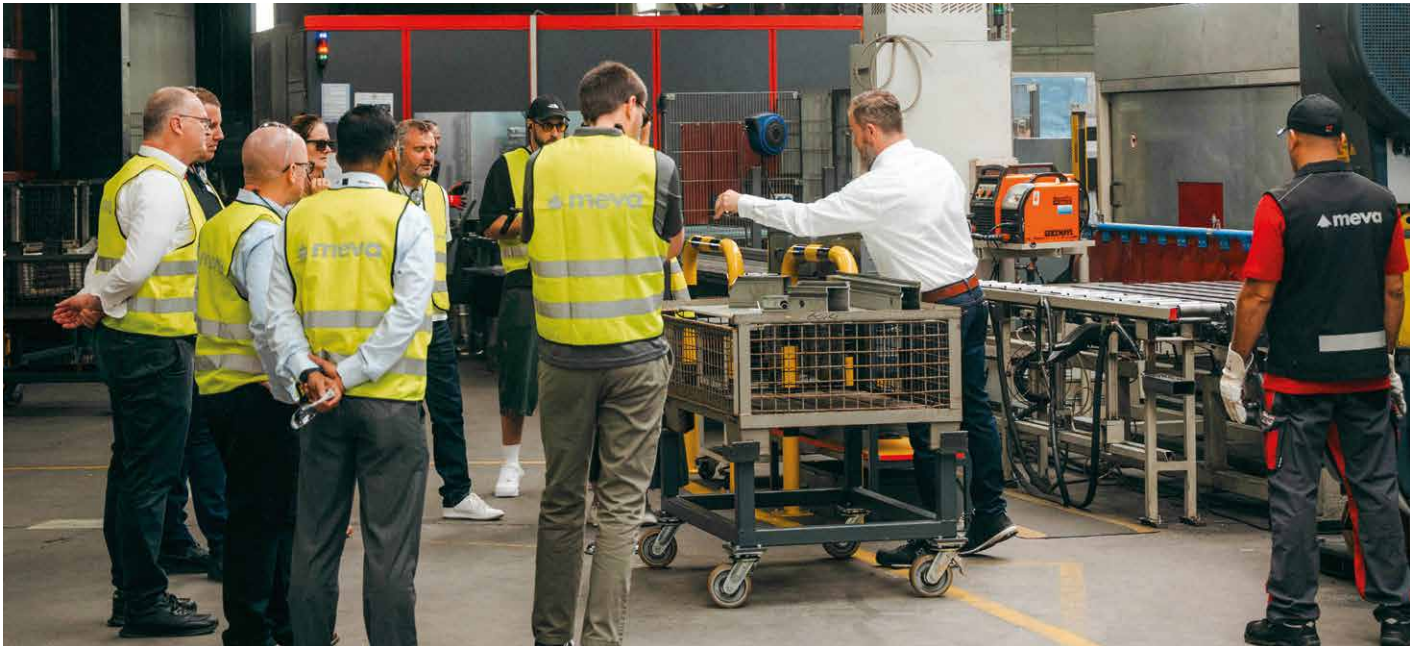
That was MEVA55

Anniversary with numerous events at lots of locations

It was not possible to celebrate our company's 50th anniversary in 2020 because of the COVID-19 pandemic. We made up for this in 2025 under the banner MEVA55 – and how! Whether lively open-house days in Hungary, a rustic "Oktoberfest" in the US subsidiary in Springfield, Ohio, a cheerful family celebration with staff and their loved ones at our headquarters in Haiterbach, a festive gala with

guests of honour in Altensteig-Wart or a spontaneous party with dancing, music and cakes at MEVA India in Navi Mumbai, the focus was always on interacting on a personal basis and looking back together on our company's impressive success story as well as successfully completed projects. All told, there was lots of laughter, dancing and animated discussions. We all had a wonderful time!







Conquering heights and challenges

Gearing up for further high-rise projects around the world with MAC

In the ever-evolving landscape of construction, where safety, speed, and sustainability take centre stage, MEVA has carved a niche with its cutting-edge solutions. At the forefront of this innovation is the MEVA Automatic Climbing (MAC) system. The unparalleled climbing formwork solution has set new standards in the construction industry and writes a success story, highlighting its global track record and its significant role in outstanding construction projects all over the world.

In the construction of high-rise buildings, safety and speed are paramount, which is why MEVA has excelled in providing ideal solutions, such as conventional formwork system and the innovative climbing system MAC, to satisfy customers. The hydraulic climbing MAC simplifies the construction process and enhances safety, making it stand out from traditional systems where each platform climbs individually. In addition, the MAC is crane-independent, saving valuable time and resources, which is a crucial factor in any construction project.

Raising 4.5 m in just 60 minutes

With MACs being completely enclosed and covered, workers are provided with comfortable working conditions as well as protection from the weather. Work on walls and slabs can be performed independently, increasing productivity, and ensuring rapid construction. The MAC can be used with all MEVA wall formwork systems. The complete unit can be raised by 4.5m in just 60 minutes and performed by small teams.

It is a testament to the company's success that it has created a proven track record on a global level. Notable accomplishments include contributing to the construction of the two tallest office buildings in Switzerland – the Roche Tower buildings 1 and 2. In Philippines Bonifacio Global City, MEVA Philippines and DDT Konstract, Inc have worked in tandem to complete the installation of the MEVA Automatic Climbing System (MAC) for the BWDC Residential Tower 10 days ahead of the targeted schedule.



Above from the left: Morocco, Switzerland, UK, Australia, Philippines, or India (right, see also on page 18). The MAC climbing system is valued worldwide for the safe construction of high-rise buildings.

MAC projects in Indian metropolises

As India's cities continue to grow, MEVA India is also gearing up for more MAC projects in thriving metropolises such as Mumbai and Ahmedabad. The success of the MEVA Automatic Climbing system in many countries around the world with numerous satisfied construction companies has set the stage for future projects where safety, speed and sustainability remain at the forefront of construction goals.

MAC stands as a symbol of innovation and success in the construction industry. Its role in iconic projects globally demonstrates its ability to meet the most demanding construction challenges. As MEVA continues to expand its footprint in India's growing cities, the MAC system is poised to play a pivotal role in shaping the skylines of the future.



Top service and proven quality

XFORM – the new brand for used formwork



The advantages of used formwork include cost-effectiveness and sustainability. With XFORM, MEVA has established a strong brand for the sale of high-quality reconditioned formwork. In Haiterbach in the south of Germany, products from MEVA and other manufacturers are carefully checked, professionally reconditioned and sold worldwide.

“Our customers profit from low prices, reliable quality and a bespoke service provided through the MEVA Group’s robust network – from the selection of the formwork to the provision of technical advice,” reports René Wolleydt, the used equipment sales manager. Thanks to a smooth and experienced logistics network, delivery and transport are quick and predictable. “We have already supplied used formwork to a large number of satisfied customers around the world,” says

“From material requirements planning and delivery to customs issues, we take care of everything, allowing our customers to concentrate on their core competencies.”

Melanie Fernandes Quinteiro, Business Sales Support

XFORM stocks formwork that can render good service over many years and in countless projects.



“XFORM stands for reliable quality, professional advice and outstanding service that goes beyond the conventional trade in used equipment.”

René Wolleydt, used equipment sales manager

Melanie Fernandes Quinteiro, who is responsible for XFORM’s Business Sales Support. For example, formwork equipment has been delivered not only to construction companies in Europe but also in Chile, Morocco, Dubai, Mongolia and the USA, where it has been used in challenging construction projects. Melanie Fernandes Quinteiro: “From material requirements planning and delivery to customs issues, we take care of everything, allowing our customers to concentrate on their core competencies.”

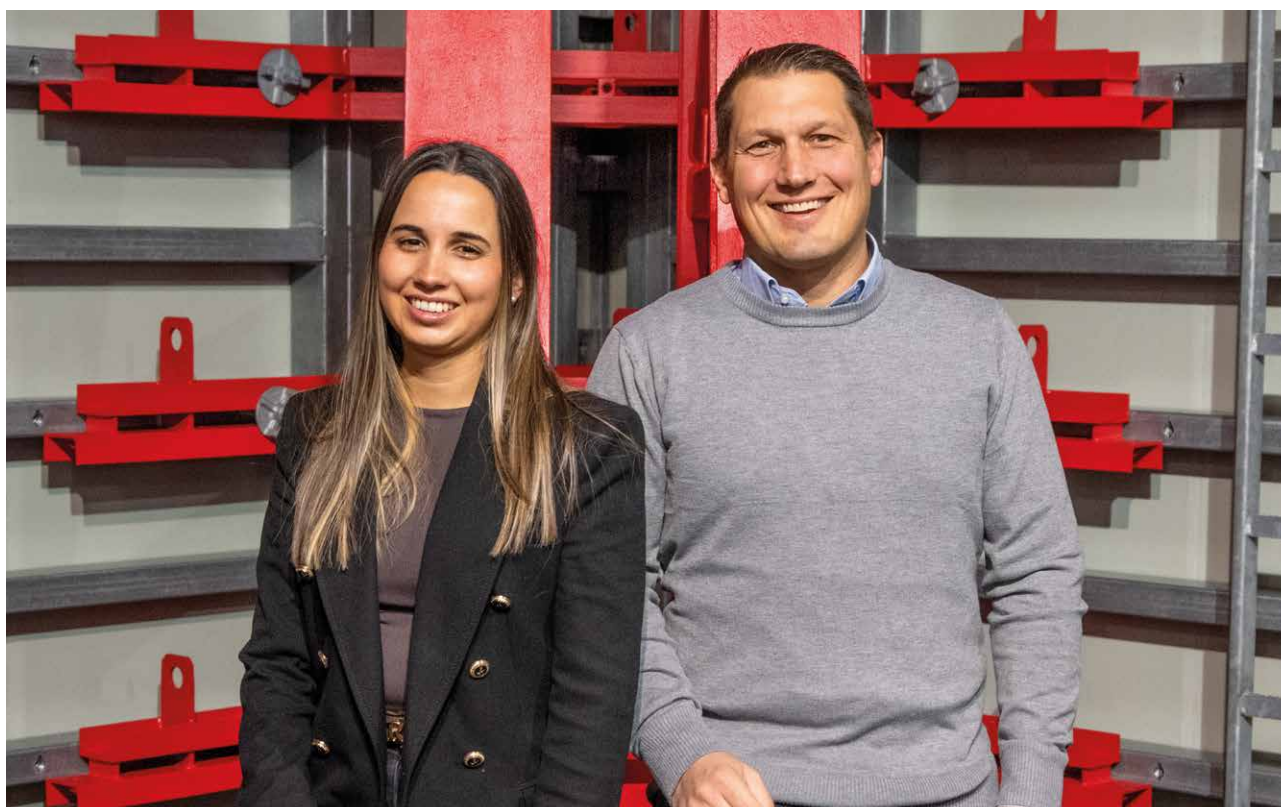
The XFORM offering stands out due to the proven quality of the brand-name products and the bespoke consultancy service provided to interested parties. Construction companies are not only able to order used formwork but also used working platforms, compatible new material and, of course, accessories, for example. “If a special customer requirement cannot be fulfilled immediately, we carry out research in our expansive network,” reports

René Wolleydt. “XFORM wants to set new standards in the international trade with used formwork. Our knowledge of market conditions, our know-how and the extensive practical experience provided by proven formwork professionals as well as the possibility to draw on the resources available at MEVA as a global company form an optimum basis for this. We purchase used formwork, check it in accordance with transparent quality standards and return it to construction sites around the world. XFORM stands for reliable quality, professional advice and outstanding service that goes beyond the conventional trade in used equipment.”

Melanie Fernandes Quinteiro adds: “Through our global sales network, our know-how and the personal consultancy, our used formwork yields maximum benefits precisely at those locations where it is really required.”

www.xform-works.net

Expertise in used formwork: Melanie Fernandes Quinteiro and René Wolleydt.



MonoFix proves itself in Panama

Alexa residential building with 14 storeys completed on time

The flexibility and ease of use of MEVA's monolithic formwork simplify the implementation of numerous construction projects worldwide. During the construction of the 14-storey Alexa residential building in Panama City, the MonoFix system not only proved itself for the first time in Panama, but also celebrated its premiere in the construction of such a tall building. This was achieved with convincing success.

The MonoFix hand-set system is a perfect all-in-one solution for all residential construction projects thanks to its outstanding features: light handling, easy assembly by hand with its pin and wedge system, cost-effective implementation on site and

the flexibility to adapt to any building layout. Walls with window and door openings, slabs, columns, stairs and balconies can be poured in a single operation. This pays off when identical houses or building sections are constructed in series, as the formwork can be used repeatedly without major modifications. As a result, only small amounts of formwork material need to be kept on site.

This was also an aspect of the Alexa project, as there was very little space available on the narrow construction site in the Panamanian metropolis. The construction company opted for MonoFix formwork for a good reason. This allowed the first 3.20 m-high level to be built in a single pour, without the need to include accessories or additional reinforcements. This was thanks to the high stability of the lightweight hand-set formwork, which sets this system apart from the competition with its aluminium facing. With a high permissible fresh concrete pressure of 60 kN/m², concreting can be carried out quickly and safely.

The geometry of the floors above meant that they could not be constructed in a single cycle. However, with the aid of four shoring sets, the effort required was kept to a minimum with four cycles per floor, with each one very different. The respective formwork constructions for the construction of walls, slabs and stairs in a single pour could be used again and again. As the already simple work

MonoFix proved easy to use in the Alexa project.



i

Project data

- **Project**
 - Alexa Residential building, Panama City, Panama
- **Project developer**
 - Emporium Developers, Ciudad de Panamá
- **MEVA systems**
 - MonoFix monolithic formwork
 - Mono Safety Platform
- **Engineering and support**
 - MEVA Sistemas de Encofrado LATAM



Mono Safety platforms with anti-slip profiling and guard railing allowed the work to be completed safely and comfortably.

steps were repeated over and over, the construction company was able to save time with each additional floor.

The fact that the slab formwork can be stripped early also contributed to the rapid progress of construction. While the props continue to support the slab that has not yet fully hardened, the formwork material can be cleaned easy with high-pressure water and prepared for the next use. This product feature also means that only the formwork quan-

ties that are actually required need to be kept in stock, which ultimately simplified logistics on the construction site.

The brand-new Mono Safety platforms from MEVA, made of aluminum with anti-slip profiling, were installed on the exterior walls for this project. Together with the installed guard railing, this allowed personnel to work safely, comfortably and without obstacles. The combined advantages of MEVA products played a decisive role in ensuring that the Alexa residential building was completed on time and to the customer's satisfaction.



The slab formwork could be stripped early and prepared for the next use. MonoFix was used to pour the walls, slabs and stairs of the Alexa building.



Pumping station and water reservoir

Impressive results with AluFix and EcoFix formwork in the Philippines

A new pumping station and a water reservoir with a capacity of 40 million litres will secure the drinking water supply in Valenzuela City, north of the Philippine capital Manila. Both structures were built using the robust hand-set EcoFix and AluFix wall formwork systems.

The compatibility of the EcoFix steel and AluFix aluminium systems enabled flexible and uncomplicated joint use of both products for double-sided formwork in this project.

Smooth concreting work

As both crane-independent systems are very robust and resilient and able to accommodate fresh concrete pressures of up to 60 kN/m² (EcoFix) and 50 kN/m² (AluFix), the concreting work on the strong retaining walls was able to be carried out quickly and smoothly.

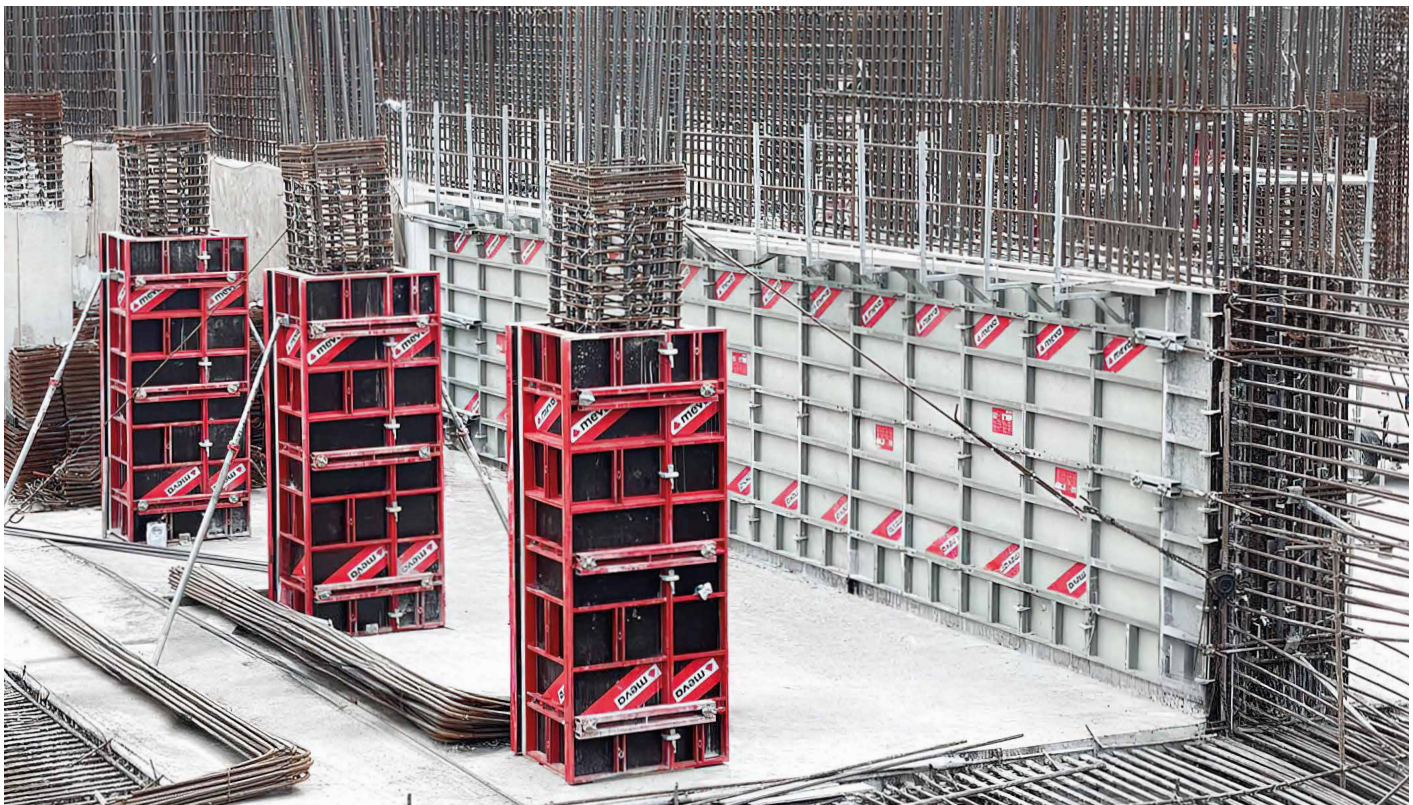
The versatility of MEVA products also came into play here. Initially, they were intended for concreting the water reservoir walls with AluFix and columns with EcoFix.

However, the experienced construction team at LinkEnergie Industries quickly recognised the advantages of both formwork systems in terms of efficient construction processes. They were therefore quickly put to use for the construction of the pump station walls as well. This meant that the material stored on site could be used interchangeably, effectively on both buildings. In particular, the compatibility of both systems contributed to simplified work and rapid construction progress. Not least, this made the logistics much easier.

... continued on page 16

Below: The EcoFix formwork was used for concreting the columns and AluFix for the walls.

Right: A view of the retaining walls (above) and into the water reservoir.







... continued from page 14

Improving efficiency, productivity and safety

The result was impressive across the board: a high-quality, clean concrete finish with minimal retouching needed.

Additionally, the easy to handle slab formwork MevaDec, supported by MEP shoring system, was used for constructing the beams that were double-reinforced for stability and load-bearing capacity. In all, the MEVA systems improved efficiency, productivity and safety in all phases of the construction process.

This project was the first of its kind in the Valenzuela region for the construction company. The LinkEnergie Industries Company demonstrated how well technical solutions can work together and achieve progressive advances in a project like this.

i

Project data

- **Project**
 - Parada Pumping Station and Water Reservoir, Valenzuela City, Philippines
- **Contractor**
 - LinkEnergie Industries Company, Inc., Manila, Philippines
- **MEVA systems**
 - AluFix wall formwork
 - EcoFix wall formwork
 - MevaDec slab formwork
 - MEP shoring system
- **Engineering and support**
 - MEVA Philippines Inc., Quezon City, Philippines

The two top photos show the lightweight AluFix system in use for the retaining walls of the reservoir building.

Left: EcoFix formwork was ideally suited for concreting the columns with high concrete quality.

MEVA enters the Uruguayan market

Partnership with MAQSSA to support the evolving construction sector

Together with MAQSSA, a member of the AVAX Group, one of Uruguay's leading construction groups, MEVA took part in the trade fair FERIA de la Construcción Uruguay 2025, held from October 15-19. For both partners, the fair in the capital Montevideo marked their first joint appearance.

Focus on monolithic formwork systems

In addition to the efficient EcoFix system, which is already known in the construction sector in Latin America and popular for infrastructure and housing projects, the focus was also on our monolithic formwork systems. The Mono range attracted a

great deal of attention thanks to its high flexibility and wide range of applications.

For MEVA, participating in the trade fair and partnering up with MAQSSA was a good start and, at the same time, an important step toward strengthening our still young presence and positioning in Uruguay.

Looking ahead, MEVA and MAQSSA will continue working closely to introduce advanced formwork solutions to the Uruguayan market. With the growing demand for faster and more industrialised construction methods, both companies see great potential for expanding the use of monolithic aluminum systems across residential, commercial and infrastructure projects. This first appearance marks the beginning of a long-term commitment to support Uruguay's evolving construction sector by combining MEVA's global expertise with MAQSSA's strong local presence.



From left to right: Juan Vergara, Director of Stiler Ingeniería y Construcción; Luis Pereira, Manager, of MAQSSA; Agustín Aitcin, Commercial Representative, MAQSSA; Andrés Pignata, Commercial Representative, MAQSSA; Guillermo Besozzi, Head of Maintenance and Assembly; Cristhian Garzon, MEVA Deputy Director LATAM.



Narmada by Kaavyaratna

How climbing formwork speeds up high-rise construction progress

The Kaavyaratna Group relied on flexible climbing technology from MEVA for the construction of a high-rise building in India. The experienced and highly recognised construction company purchased and combined two MAC units with the flexible MBS formwork, saving a lot of time in this project.

The Narmada by Kaavyaratna high-rise project is located in GIFT City, whose name refers to the Gujarat International Finance Tec-City, India's first global financial and technology hub currently under construction in Gandhinagar. It is located in western India, north of the metropolis of Ahmedabad. GIFT City aims to offer international financial services and attract foreign investment. Here, the Kaavyaratna Group construction company is erecting a high-rise commercial building – the Narmada by Kaavyaratna.

The building with 29 floors, each 3.9 metres high, houses two cores for lifts and stairwells. One core covers an area of 495 m², the second 675 m². Safety and speedy construction are the priorities when erecting very tall buildings. This also applies to this project. MEVA offers ideal solutions ranging from conventional climbing scaffolds to automatic climbing systems ensuring efficient and quick climbing, even under challenging conditions. Here, the experienced Kaavyaratna construction team opted for the MEVA Automatic Climbing (MAC) system, cleverly combined with the MEVA Beam System (MBS) wall and column formwork.

The MAC climbs hydraulically as a single unit, simplifying the construction process and increasing safety compared with climbing systems in which every platform climbs individually. It's also crane-independent, saving time and money. Completely covered and enclosed units provided comfortable working conditions as well as protection against the weather in the Narmada by Kaavyaratna project. The MAC platform offers sufficient storage spaces as well as allowing concrete placing booms to be integrated. Work on wall and slab can be performed independently, increasing productivity and ensuring rapid construction. Complete units can be raised in less than 60 minutes and performed by small teams.

The climbing system can be used with all MEVA wall formwork systems. On this project MBS was chosen. It is a wall and column formwork system to suit any geometry and is available with a

H20 girder and a K6 aluminium beam. MBS can withstand permissible concrete pressure of up to 100 kN/m² with single pours in excess of 10m.

Only four days per concrete cycle

High performance and flexibility paid off in this project. Round corners on the cores were easy to form with this system combination. In addition, the construction company achieved rapid construction progress: in just four days, one floor was completed on each of the two cores. Kaavyaratna will continue to benefit from this high speed in the future through the use of MAC and MBS in residential and commercial building applications.

The climbing system planning was the result of efficient cooperation between experienced MEVA-technicians and structural engineers at MEVA India in Navi Mumbai and the headquarters in Germany in close cooperation with Kaavyaratna Group.

The MAC system saved time during the construction of the cores.





i

Project data

- **Project**
 - Narmada by Kaavyaratna, GIFT City, Gujarat, India
- **Contractor**
 - Kaavyaratna Group, Gandhinagar, Gujarat, India
- **MEVA systems**
 - MBS wall and column formwork
 - MAC climbing system
- **Engineering and support**
 - MEVA Formwork Systems Pvt. Ltd., Navi Mumbai, India

Left: The flexibility of MAC and MBS paid off in this project. Round corners on the cores were easy to form with this combination. Below: The external and internal walls of the cores were constructed using MBS wall and column formwork.



You can rely on us wherever you are.

With over 40 offices on 5 continents, we are
on the spot wherever you need us.

Headquarters (Germany)

MEVA Schalungs-Systeme GmbH
Industriestrasse 5
72221 Haiterbach
Tel. +49 7456 692-01
Fax +49 7456 692-66

info@meva.net
www.meva.net

Subsidiaries/international bases

AE-Dubai	Tel. +971 4 8042200	LU-Rodange	Tel. +352 20 283747
AT-Pfaffstatten	Tel. +43 2252 20900-0	MA-Casablanca	Tel. +212 684-602243
AU-Adelaide	Tel. +61 8 82634377	MY-Perak	Tel. +60 12 5209337
BE-Landen	Tel. +32 11 717040	NL-Gouda	Tel. +31 182 570770
BH-Riffa	Tel. +973 3322 4290	NO-Oslo	Tel. +47 67 154200
CA-Toronto	Tel. +1 416 8565560	NORDIC	Tel. +45 2043 1855
CH-Seon	Tel. +41 62 7697100	PA-Panama City	Tel. +507 2372222
FR-Sarreguemes	Tel. +33 387 959938	PH-Manila	Tel. +63 998 5416975
GB-Tamworth	Tel. +44 1827 60217	QA-Doha	Tel. +974 4436 6742
HU-Budapest	Tel. +36 1 2722222	SG-Singapore	Tel. +65 6992 8000
IN-Mumbai	Tel. +91 22 27563430	US-Springfield	Tel. +1 937 3280022
LATAM	latam@meva.net		



MEVA Schalungs-Systeme GmbH

Industriestrasse 5 Tel. +49 7456 692-01
72221 Haiterbach Fax +49 7456 692-66
Germany info@meva.net

www.meva.net