

StarTec

Multi-Purpose Formwork

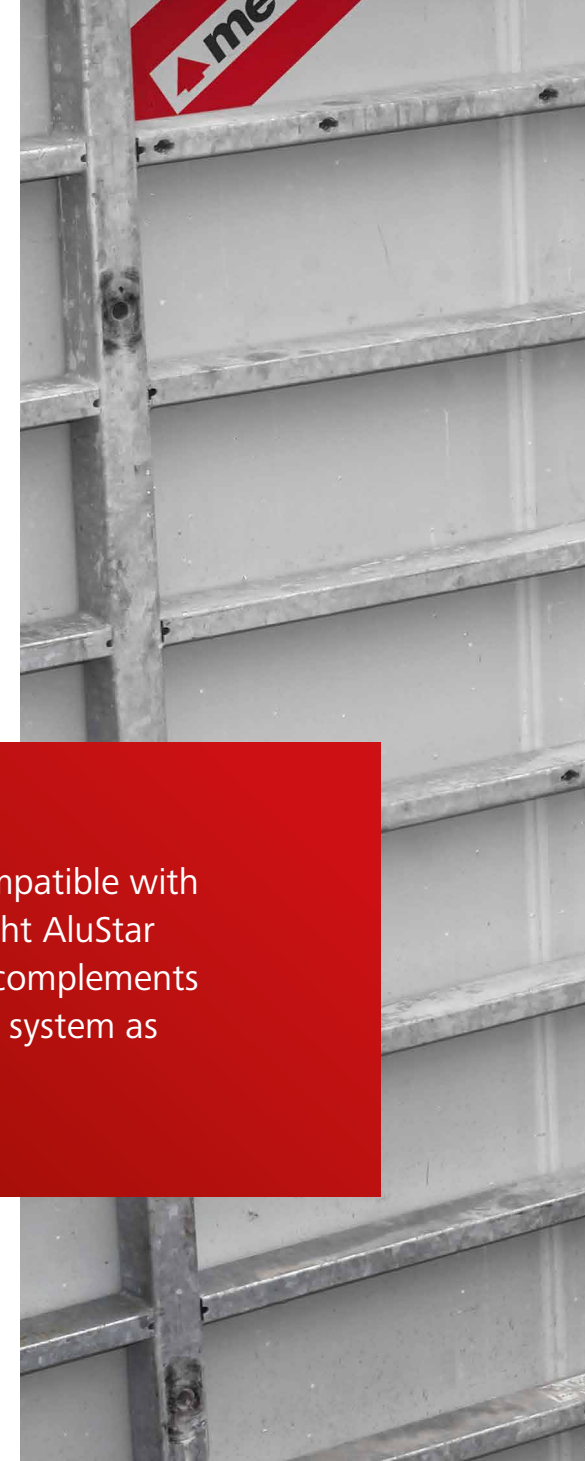


Flexible, universal formwork solution

StarTec has the answer to many different challenges

The universal steel formwork that is capable of accommodating fresh concrete pressures of 60 kN/m² is a genuine all-rounder. In terms of top performance and efficiency, StarTec boasts a long and impeccable track record worldwide.

As StarTec is 100% compatible with the compact, lightweight AluStar formwork, it perfectly complements this crane-independent system as well.





i

Simply smart

StarTec multi-purpose formwork

- **Size**
 - Up to 8.91 m² contact area per panel (330 x 270 cm)
- **Capacity**
 - Permissible fresh concrete pressure (to DIN 18218) over entire surface of 60 kN/m² (DIN 18202, Tab. 3, Line 6)
- **Universal application in residential and commercial developments**
- **Closed hollow steel frame profile**
 - Structurally robust
 - Torsion-proof
 - Hot-dip galvanised to facilitate cleaning and reduce concrete adhesion
- **Smart multifunctional profile**
 - Welded-in Dywidag nuts
 - All accessories, e.g. brackets, push-pull props and alignment rails, attached with MEVA flange screw
- **Tying for inclined or stepped-level formwork**
 - Tie hole with conical steel anchor sleeve, welded in from both sides
- **Intelligent MEVA product design**
 - MEVA assembly lock for a structurally continuous connection with only a few hammer blows
 - Bump notches for panel widths of 135 cm and more to simplify adjustment and alignment with crow bar
 - High-quality alkus all-plastic facing with 7-year warranty
- **Full compatibility with lightweight AluStar**

StarTec

A wall full of ideas

MEVA quality in every detail

MEVA systems excel through their supreme standards of quality, efficiency and practical detailing. And the tried-and-tested StarTec multi-purpose formwork is no exception. With standardised system components, a minimum of accessories and a closely tailored product range, it combines all the features that make MEVA systems the unbeatable solution for practical on-site operations.

- Fully compatible with AluStar
- Combinable with MEVA accessories
- Full range of safety accessories with StarTec-Securit and SecuritBasic



Flange screw

Single component for strong connection of all accessories

Multi-function profile

Made from closed hollow steel profiles with welded-in DW 15 nuts for rapid, structurally continuous connection of accessories

Hot-dip galvanised frame

Surface finish facilitates cleaning and reduces concrete adhesion

Closed hollow profile

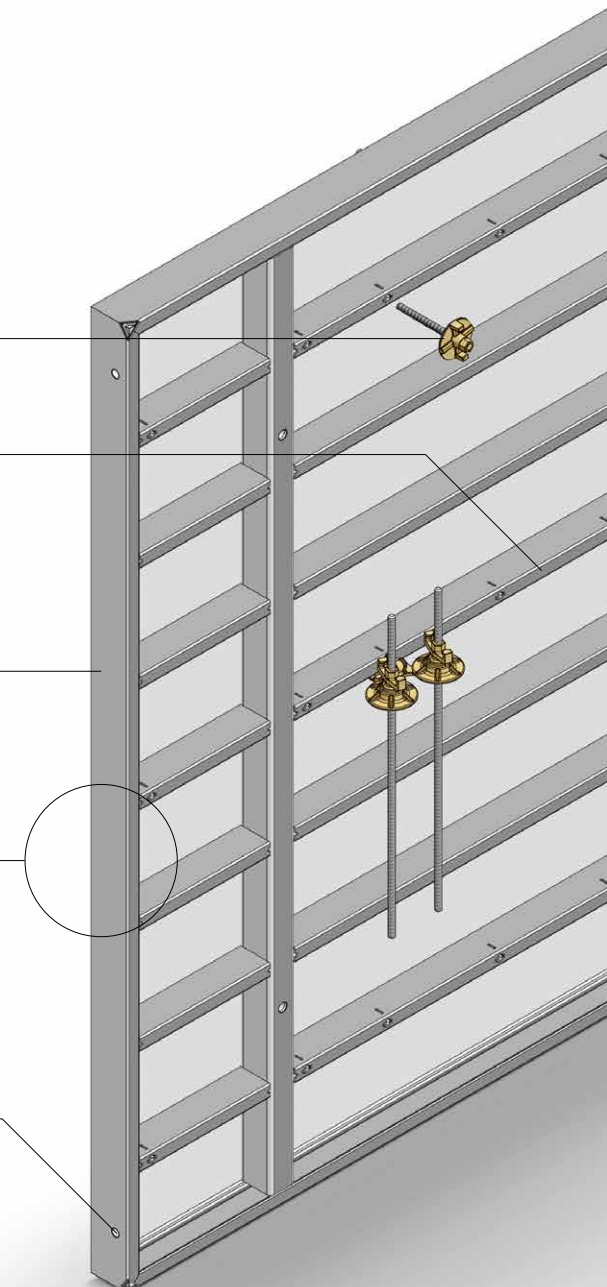
For high stability and a long service life

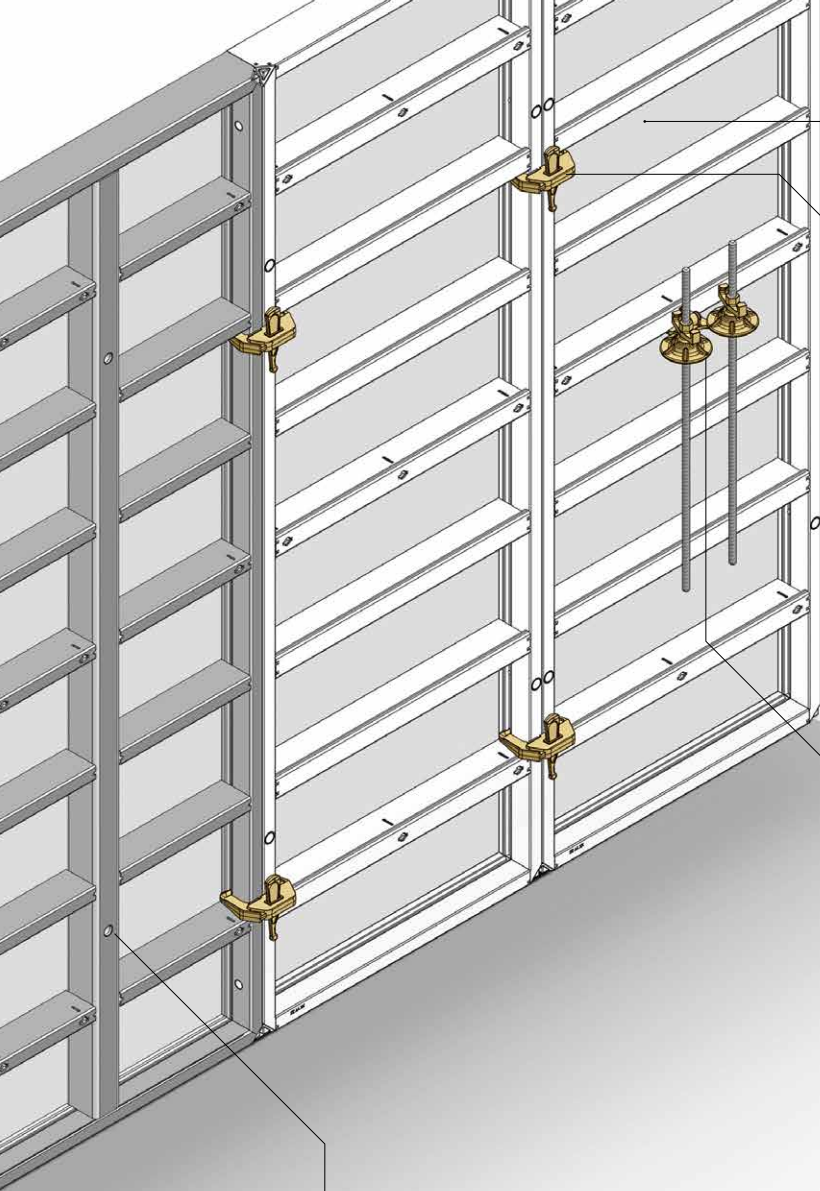
Transport hole

Designed to take the lifting hook 40 for rapid loading/unloading and movement of panel stacks

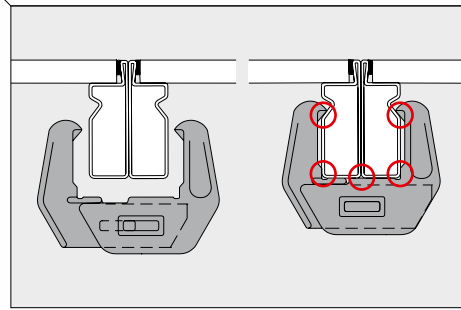
Bump notch

Fitted at four corners for panel widths of 135 cm and more to simplify adjustment and alignment with crow bar



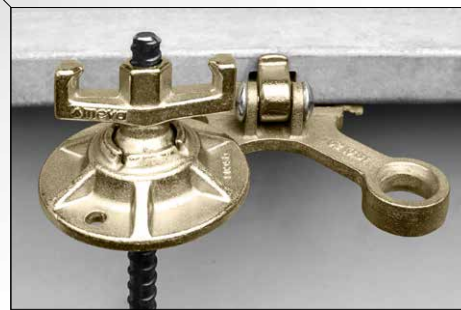


Fully compatible with lightweight AluStar



AS assembly lock
 Only one component needed for rapid, reliable panel connection: MEVA assembly lock. Allows single-handed fitting at any position along the frame. A few hammer blows suffice to achieve a strong, level and stepless panel connection.

Tie hole
 With conical anchor sleeve, welded in from both sides



Tie rod fixture
 For fixing to multi-purpose profile of upright or horizontal StarTec panels – for fast and safe transportation on site.



alkus all-plastic facing
 No water absorption, resistant to swelling and shrinkage. Smooth, robust surface guarantees a high-quality concrete finish, even after heavy use.

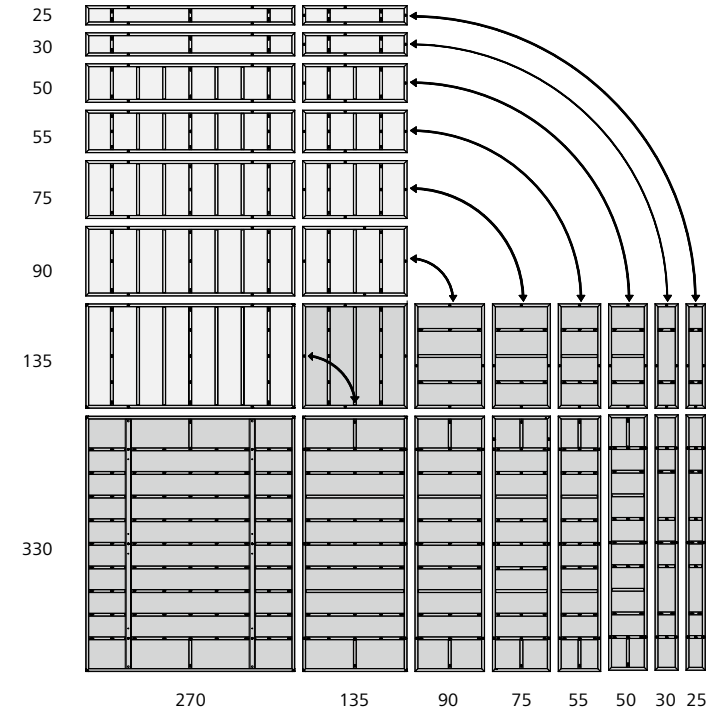
Design with system

StarTec panels and corners

Proven flexibility

With panel heights of 330 cm to 75 cm and panel widths of 270 cm to 20 cm, StarTec is readily adaptable to specific geometries. Thanks to the variety of elements, all common wall thicknesses can be reproduced without fitting areas.

The system also has articulated corners that are infinitely adjustable from 60° to 180°.



Height [cm]	Panel width [cm]														MPP	Corner panels					Fillers	
	270	240	135	90	75	55	50	49	45	40	30	25	24	20		IC	OC	HIC	HOC	SC	FS	
330	■		■	■	■	■	■				■	■				■	■	■	■	■		
270		■	■	■	■	■	■	■	■	■	■	■	■	■	■	■	■	■	■	■	■	
135		■	■	■	■	■	■	■	■	■	■	■	■	■	■						■	
90		■		■	■	■	■					■				■	■					
75		■																				

MPP Multi-purpose panel, width 75 cm
 IC Inside corner, side length 25 cm
 OC Outside corner

HIC Hinged inside corner, side length 30 cm
 HOC Hinged outside corner, side length 7.5 cm
 SC Stripping corner, side length 25 cm
 FS Filler strip, 5 cm

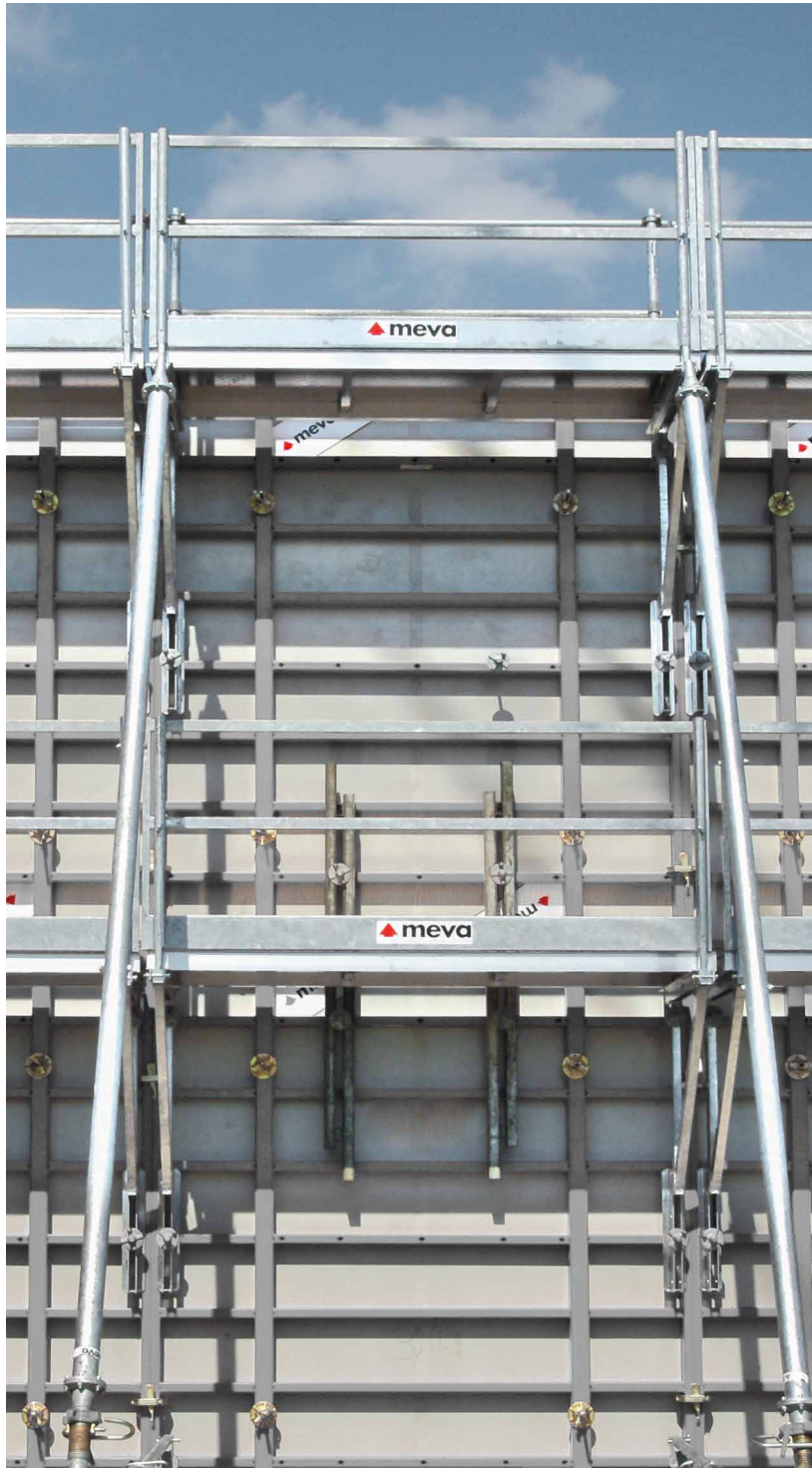
StarTec and AluStar

An unbeatable duo

A real Star team

Together, StarTec and AluStar comprise a product family featuring crane-independent aluminium and large-format steel panels. The only component needed for their universal application is the assembly lock. No other adapters or connectors are required. Combined use of the two systems allows the efficient and flexible deployment of resources to meet all on-site demands.





SecuritBasic

Cost-effective all-in system

Modular safety

The safety system with a working platform is easy to install using a single component – the flange screw. A loadbearing capacity of up to 200 kg/m² guarantees start-to-finish safety throughout the assembly and concreting operations.

StarTec-Securit

The safety system

Delivered ready-for-use

At least as quick to install as a conventional solution with brackets and loose planks, this integrated, pre-assembled safety equipment system offers true value for money. The ready-fitted working platform is delivered to the site in folded form with the StarTec panel. With a low height of less than 30 cm to facilitate transportation, the StarTec-Securit units are ready for immediate use from the stack. The folding platform remains fixed to the panel. The working platform itself is fitted with rear protection, side and front railings as well as an access hatch with integrated ladder and brace frames.



Pioneer and trendsetter

More with MEVA

Formwork. Simple. Smart.

A lot of things that are now considered to be standard in the formwork industry were developed by MEVA in Haiterbach. As a trendsetter for the entire industry, we work day in and day out with great élan to make formwork even safer, more efficient and easier to use for the end user. For us, the excellent quality of our products and technology is a matter of course.

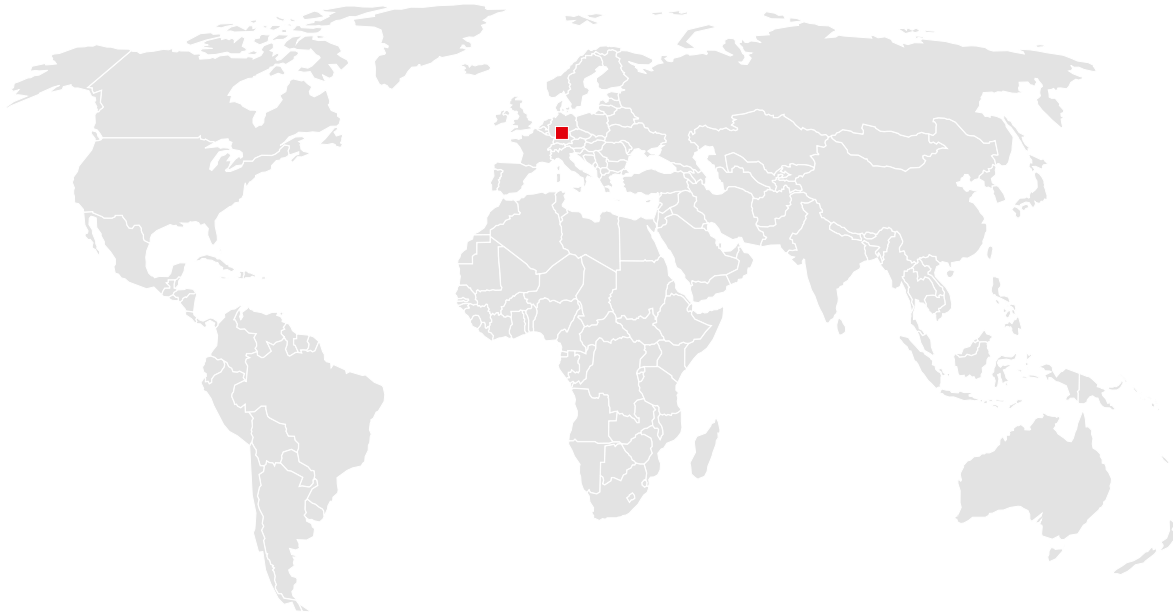
We are independent, family-run and committed to the values of a medium-sized company in everything we do. That is why our customers may rightly expect not only technologically superior products but also comprehensive, personal commitment to projects all around the world.

Complex special formwork or economical standard formwork: Our experience and wide range of products make us a service partner with strong consulting skills, even for the sophisticated challenges construction professionals have to master nowadays.



You can rely on us wherever you are.

With 40 offices on 5 continents, we are
on the spot wherever you need us.



Headquarters (Germany)

MEVA Schalungs-Systeme GmbH
Industriestrasse 5
72221 Haiterbach
Tel. +49 7456 692-01
Fax +49 7456 692-66

info@meva.net
www.meva.net

Subsidiaries/international bases

AE-Dubai	Tel. +971 4 8042200	LATAM	latam@meva.net
AT-Pfaffstätten	Tel. +43 2252 20900-0	LU-Rodange	Tel. +352 20 283747
AU-Adelaide	Tel. +61 8 82634377	MA-Casablanca	Tel. +212 684-602243
BE-Landen	Tel. +32 11 717040	MY-Perak	Tel. +60 12 5209337
BH-Riffa	Tel. +973 3322 4290	NL-Gouda	Tel. +31 182 570770
CA-Toronto	Tel. +1 416 8565560	NO-Oslo	Tel. +47 67 154200
CH-Seon	Tel. +41 62 7697100	PA-Panama City	Tel. +507 2372222
DK-Holbæk	Tel. +45 56 311855	PH-Manila	Tel. +63 998 5416975
FR-Sarreguemines	Tel. +33 387 959938	QA-Doha	Tel. +974 4006 8485
GB-Tamworth	Tel. +44 1827 60217	SG-Singapore	Tel. +65 67354459
HU-Budapest	Tel. +36 1 2722222	US-Springfield	Tel. +1 937 3280022
IN-Mumbai	Tel. +91 22 27563430		



MEVA Schalungs-Systeme GmbH

Industriestrasse 5 Tel. +49 7456 692-01
72221 Haiterbach Fax +49 7456 692-66
Germany info@meva.net

www.meva.net