



## Special formwork

Individual solutions  
for every challenge



 **meva**

## Special formwork – aluminium & steel

# Well combined

### A cost-effective combination

The combination of standard and special parts as well as the modification of standard parts is the efficient solution, inter alia, for

- Corner panels for wastewater treatment plants
- Special parts for inclined, curved walls
- Special panels for slabs
- Rectangular and circular formwork
- Special steel versions for tunnel construction

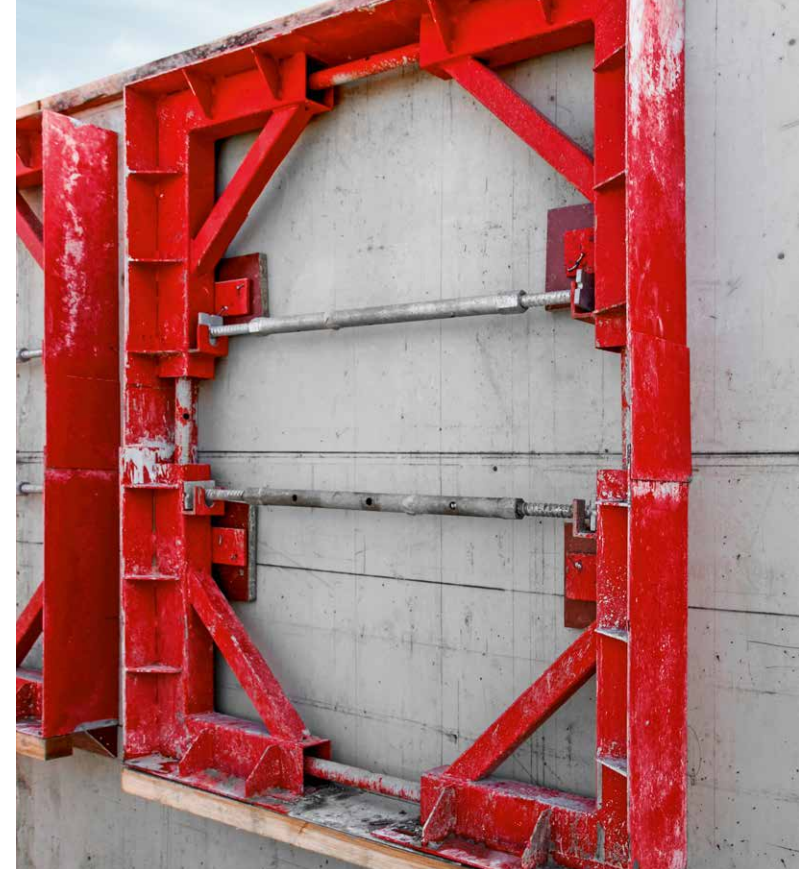
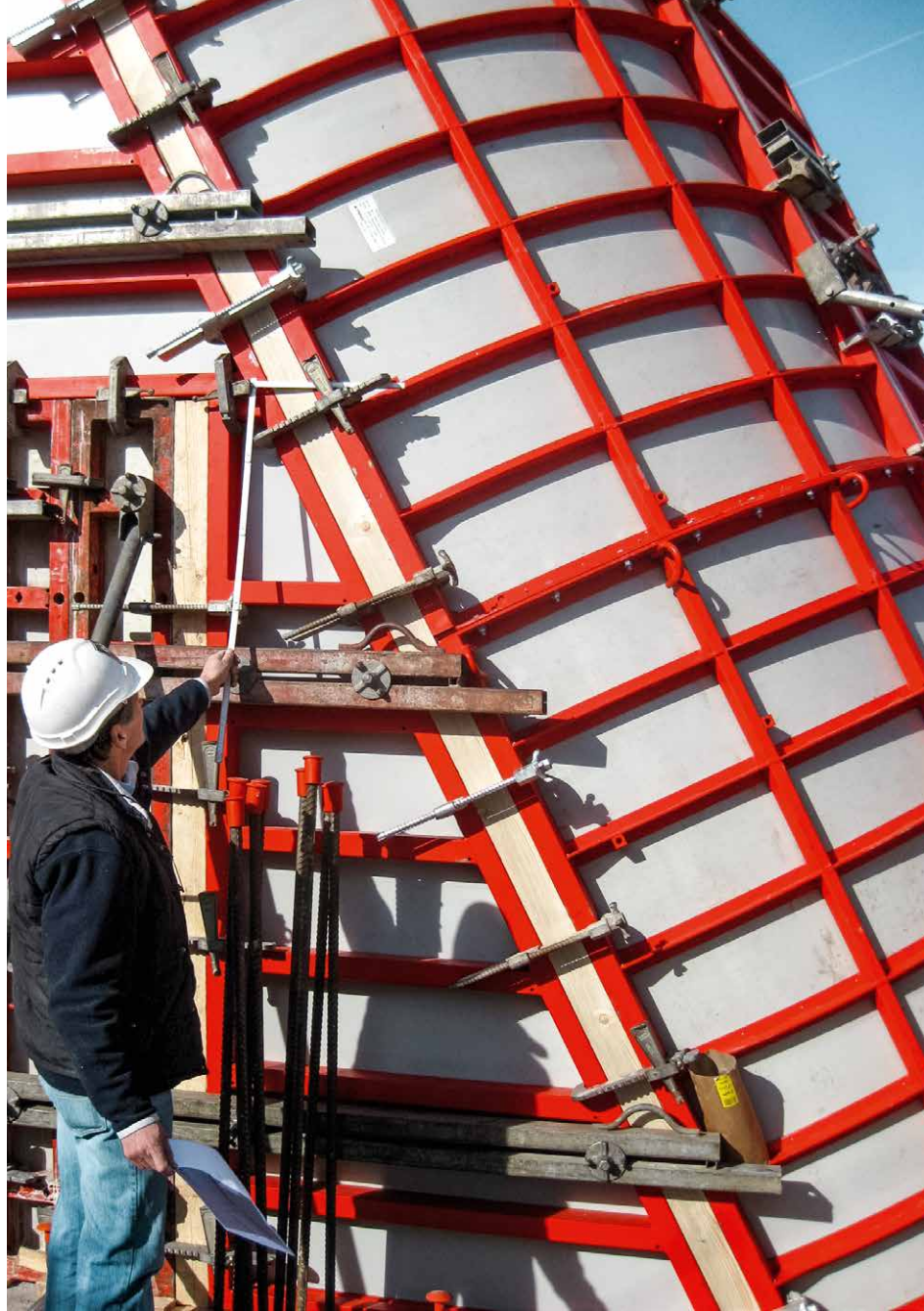
The MEVA assembly lock connects standard and special parts efficiently and in non-positive way.



Mobile tunnel formwork.



Special formwork can be produced for inclined and curved structures on the basis of the Circo circular column formwork. For example, at the Holmfild Exchange in the UK.



The openings developed to meet the corresponding requirements at this construction site convince through their cost-effectiveness when used a number of times.

Special formwork based on the Mammut wall formwork.



## Special formwork made of wood

# For complex geometries

### Customised solutions

Special wooden formwork is the ideal choice when between one and five pours are required without refacing. This is often the case when forming complex geometric shapes.

The focus is on feasibility, cost-effectiveness, a smooth construction process and the desired concrete form. MEVA specialists develop proposals in accordance with the requirements on concrete finish, number of applications, fresh-concrete pressure loading, transport and the use on the construction site.

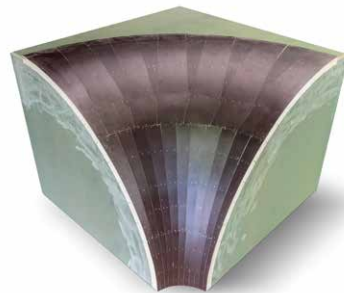
#### Facing portfolio

- Laminated plywood (21 mm)
- Laminated plywood (8 mm) on a supporting structure
- alkus 6 mm (GM) on plywood
- alkus 20 mm as load-bearing facing
- alkus 20 mm, seamlessly welded, polished for uniform concrete finishes, also for long-term use

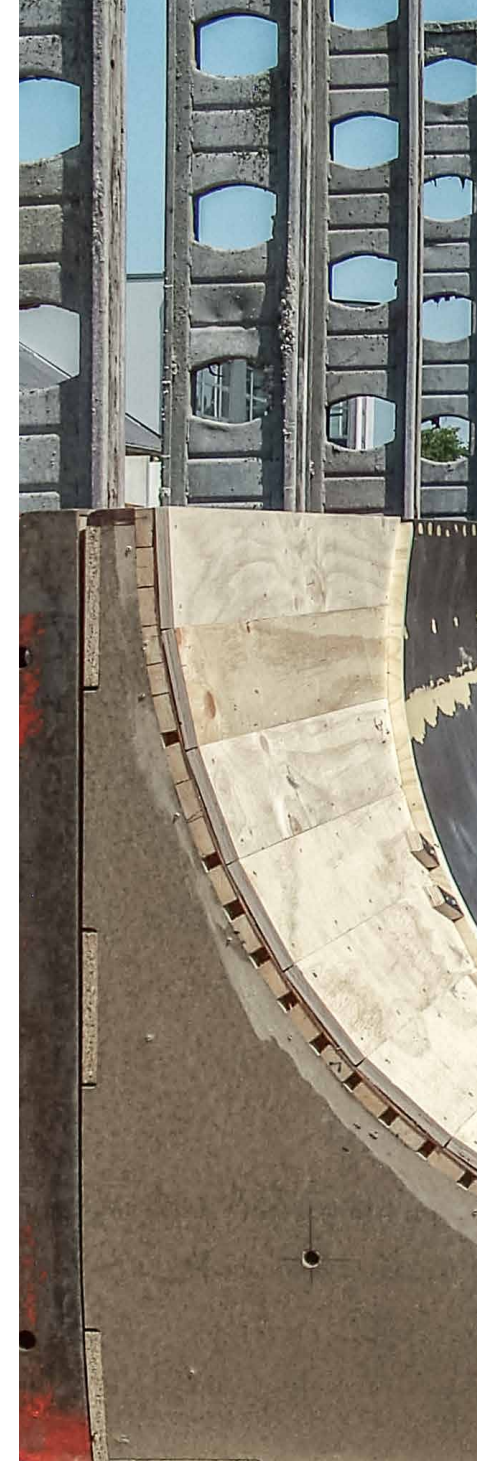
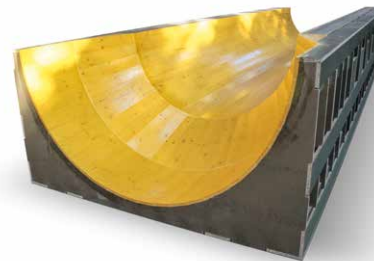
Special formwork made of wood.



Example of wooden formwork for special geometries.



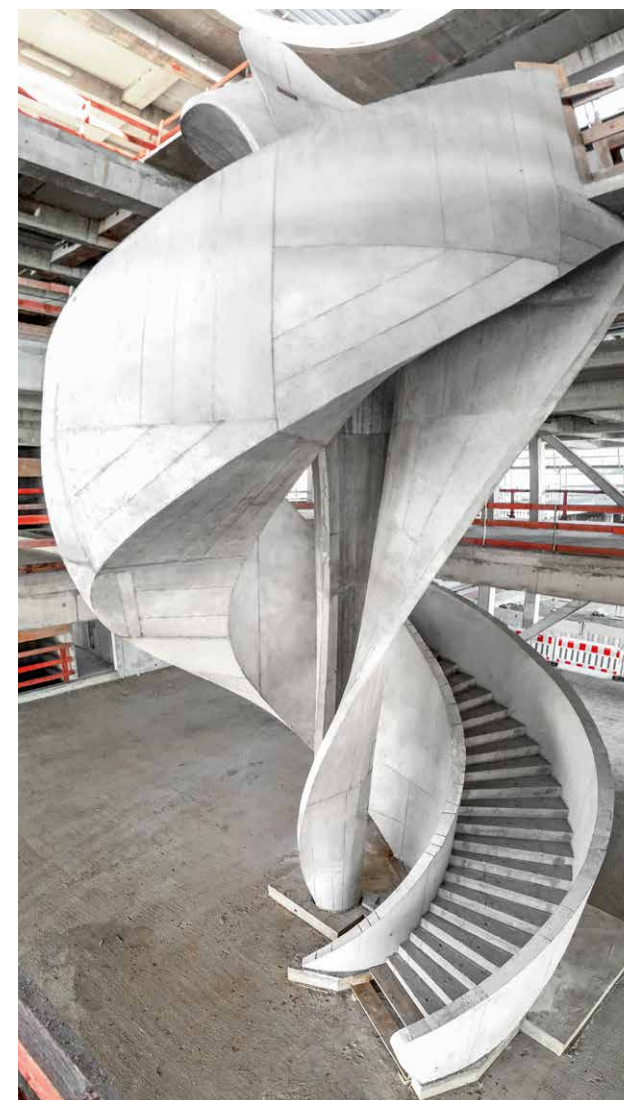
Special formwork for bridge piers.

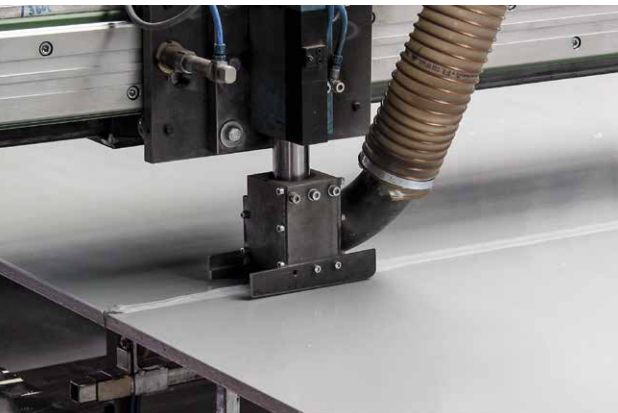




Special formwork made of wood for the production of prefabricated components.

Extraordinary curved staircase in the form of a tulip created using special formwork made of wood.





Seamless, extensively welded 20 mm facing. The welding of the corners functions just like when welding steel; the weld can be loaded reliably.

## Special versions with alkus facings

# Architectural concrete in good shape

## Seamless surface

With alkus, concrete can be poured in any desired shape. The alkus all-plastic facing is very simple and can be formed and bent with a high degree of precision. Furthermore, it can be extensively welded. This enables large, smooth concrete surfaces to be achieved without joints or imprints.

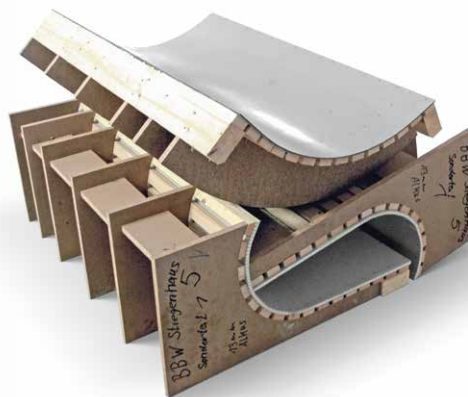
### Fields of application

- Highest architectural concrete requirements
- Highest requirements on uniform concrete finishes
- Large number of applications

### Portfolio

- alkus all-plastic facings welded together
- Welded corners
- Pre-bent shapes
- alkus 6 mm (GM) on a wooden substructure
- Polished alkus facings for special effects
- Milling of cuts, images and decorative elements on the alkus surface

Preshaped alkus all-plastic facing on a wooden substructure.



6 mm GM version of the alkus all-plastic facing on a wooden substructure.





Large-format 6 mm (GM) alkus all-plastic facing on a wooden substructure.

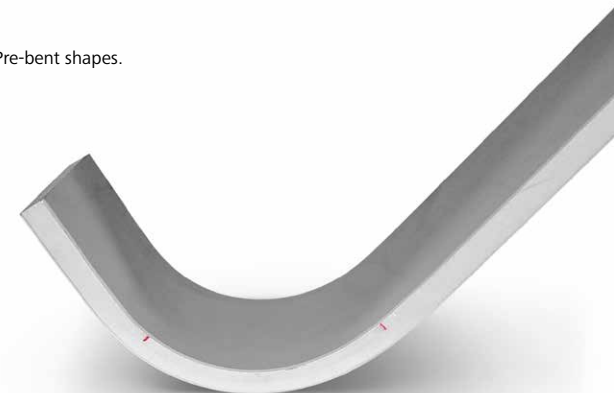


To achieve small bending radii, the alkus all-plastic facing is correspondingly machined.



Milled, butt jointed and then connected with Lamello connectors without welds.

Pre-bent shapes.



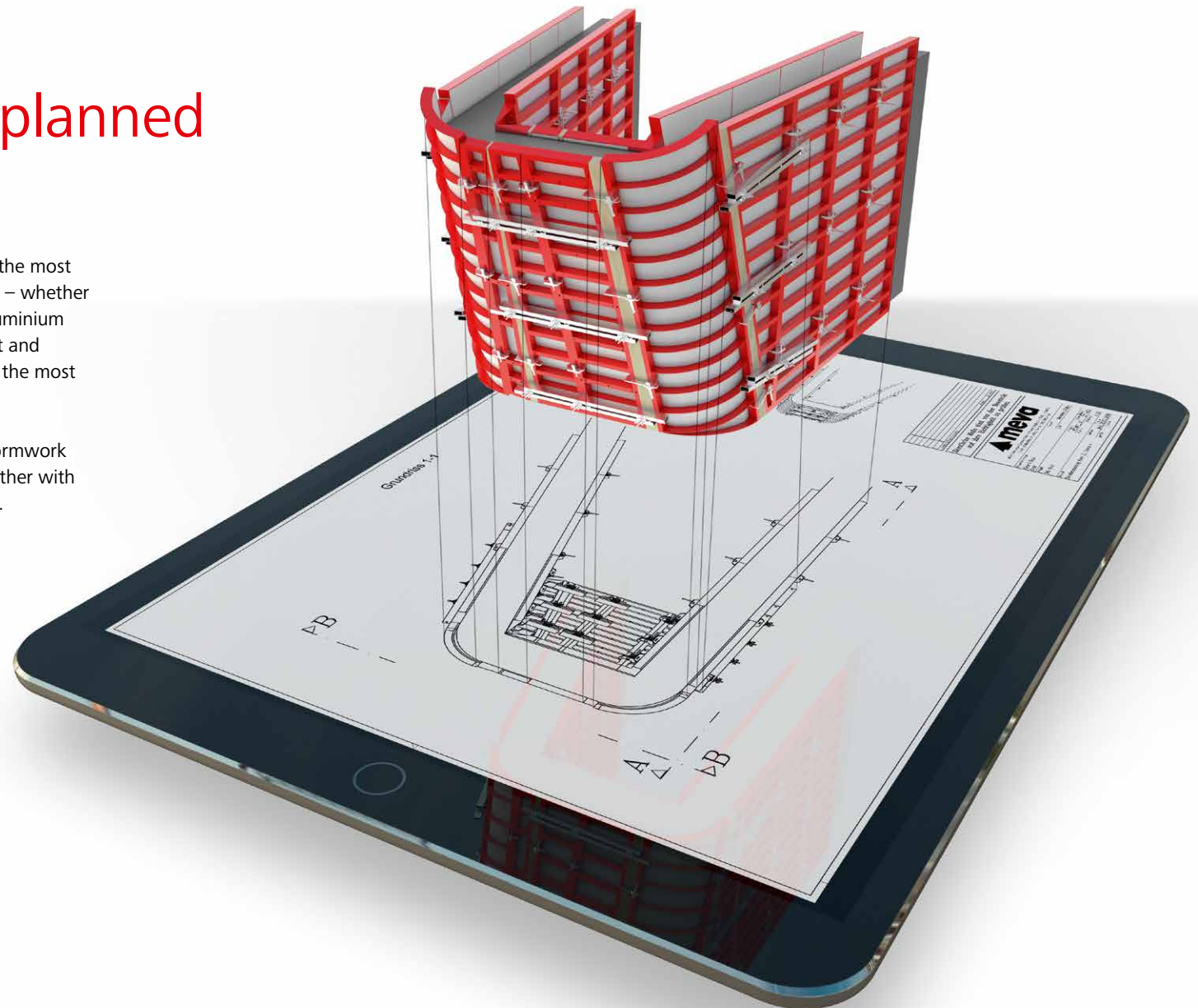
## Planning

# Success can be planned

### A perfect overview

We provide advise and then model and develop the most cost-effective solution to meet your specification – whether using the alkus all-plastic facing, wood, steel, aluminium or a combination of these. Thanks to transparent and efficient processes, together with you we realize the most cost-effective solution for your project.

Using state-of-the-art CAD systems, we create formwork plans with detailed bills of material or work together with you on your BIM project via optimised interfaces.







Transparent and efficient processes during planning: from the tender submission phase to the use of the finalized special formwork.

## Pioneer and trendsetter

# More with MEVA

Formwork. Simple. Smart.

A lot of things that are now considered to be standard in the formwork industry were developed by MEVA in Haiterbach. As a trendsetter for the entire industry, we work day in and day out with great élan to make formwork even safer, more efficient and easier to use for the end user. For us, the excellent quality of our products and technology is a matter of course.

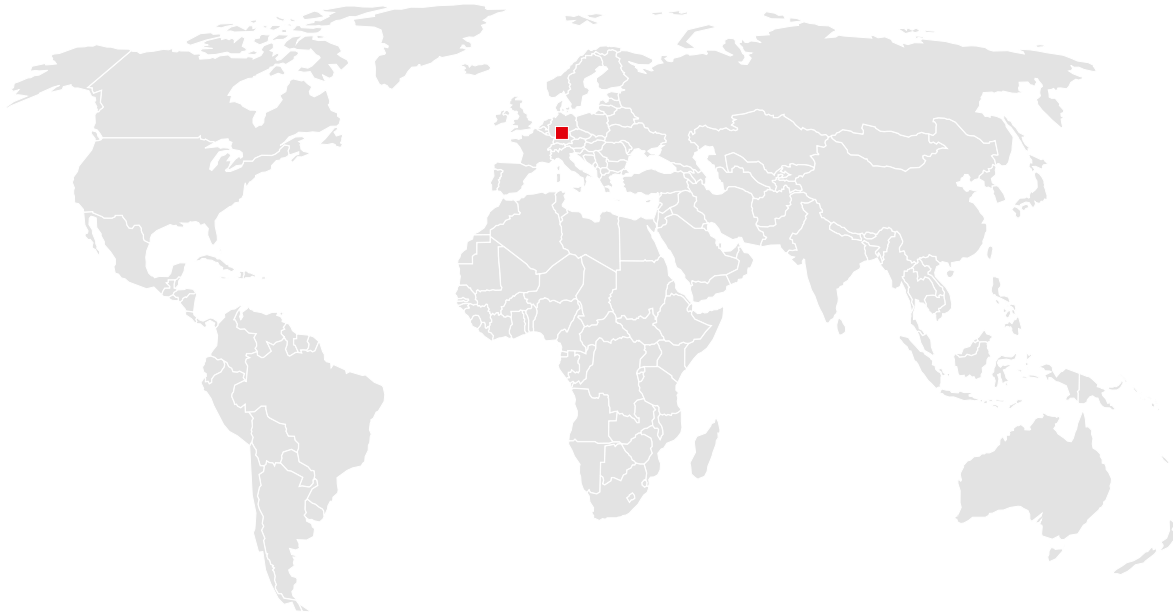
We are independent, family-run and committed to the values of a medium-sized company in everything we do. That is why our customers may rightly expect not only technologically superior products but also comprehensive, personal commitment to projects all around the world.

Complex special formwork or economical standard formwork: Our experience and wide range of products make us a service partner with strong consulting skills, even for the sophisticated challenges construction professionals have to master nowadays.



# You can rely on us wherever you are.

With 40 offices on 5 continents, we are  
on the spot wherever you need us.



## Headquarters (Germany)

---

MEVA Schalungs-Systeme GmbH  
Industriestrasse 5  
72221 Haiterbach  
Tel. +49 7456 692-01  
Fax +49 7456 692-66

info@meva.net  
www.meva.net

## Subsidiaries/international bases

---

AE-Dubai	Tel. +971 4 8042200	LATAM	latam@meva.net
AT-Pfaffstatten	Tel. +43 2252 20900-0	LU-Rodange	Tel. +352 20 283747
AU-Adelaide	Tel. +61 8 82634377	MA-Casablanca	Tel. +212 684-602243
BE-Landen	Tel. +32 11 717040	MY-Perak	Tel. +60 12 5209337
BH-Riffa	Tel. +973 3322 4290	NL-Gouda	Tel. +31 182 570770
CA-Toronto	Tel. +1 416 8565560	NO-Oslo	Tel. +47 67 154200
CH-Seon	Tel. +41 62 7697100	PA-Panama City	Tel. +507 2372222
DK-Holbaek	Tel. +45 56 311855	PH-Manila	Tel. +63 998 5416975
FR-Sarreguemines	Tel. +33 387 959938	QA-Doha	Tel. +974 4006 8485
GB-Tamworth	Tel. +44 1827 60217	SG-Singapore	Tel. +65 67354459
HU-Budapest	Tel. +36 1 2722222	US-Springfield	Tel. +1 937 3280022
IN-Mumbai	Tel. +91 22 27563430		



### MEVA Schalungs-Systeme GmbH

Industriestrasse 5      Tel. +49 7456 692-01  
72221 Haiterbach      Fax +49 7456 692-66  
Germany                info@meva.net

[www.meva.net](http://www.meva.net)