



# Working Platforms

Safe and rapid deployment



## MEVA working platforms

# Safe working practice on formwork and buildings

Regardless of the specific application and site conditions, MEVA offers smart system solutions combining maximum safety with fast assembly. The key considerations governing the use of working scaffolds are rapid deployment, space-saving storage and efficient transportation.

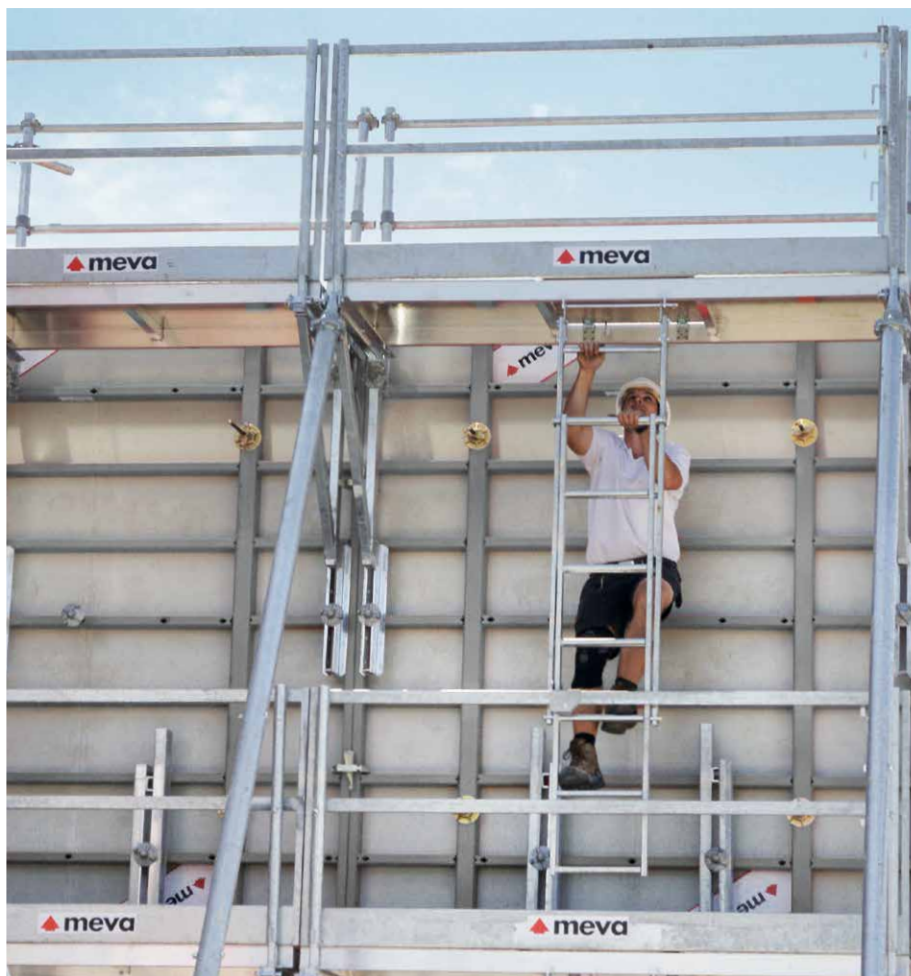
## BKB foldable pouring platform

Safe, quick-to-assemble working scaffold for wall formwork. The 125 cm platform width offers ample working space, even at elevated locations.



## SecuritBasic

SecuritBasic is the modular safety system for MEVA wall formwork systems. It is installed to the wall formwork panels when they are safely lying on the ground. This saves assembly time and guarantee the highest level of safety right from the start.



## KAB foldable working platform

Working and safety scaffold with integrated platform flooring and fold-out guarding rail. Used in conjunction with a formwork system, the KAB foldable working platform can also serve as a climbing scaffold.



## BKB – the foldable pouring platform

# Guaranteed safety in every situation

### Just hook into place

MEVA's BKB foldable pouring platform can be rapidly mounted on formwork panels to provide a safe working scaffold. Just fold out, hook into place and start work. Self-locking suspensions are available for MEVA's AluStar, StarTec, Mammut 350 and Mammut XT formwork systems.

The side railing 125 can be flexibly used to fill gaps, provide rear protection or close off ends. Various platform lengths allow adaptation of the system in line with requirements.



Safe, easy and fast. The BKB foldable pouring platform is simply hooked into place on the formwork panel.

The low stacking height helps to economise on space during storage and transportation.



**i**

## Simply smart

- **Safe**
  - Self-locking suspension mechanism
  - Safety thanks to side railing and corner platform
- **No time lost – just fold out, hook into place and start work**
- **A top performer**
  - Load capacity of 2 kN/m<sup>2</sup> in line with DIN 4420
- **Intelligent MEVA product design**
  - Preassembled, foldable guard railing
  - Generous platform width of 125 cm
  - Low stacking height of 17 cm
  - Platform lengths of 140, 235 and 300 cm

## SecuritBasic – the safety system

# Safety for every wall formwork

Everything in one system: platforms, access ladders, safety cages, front railings, brace frames and side railings

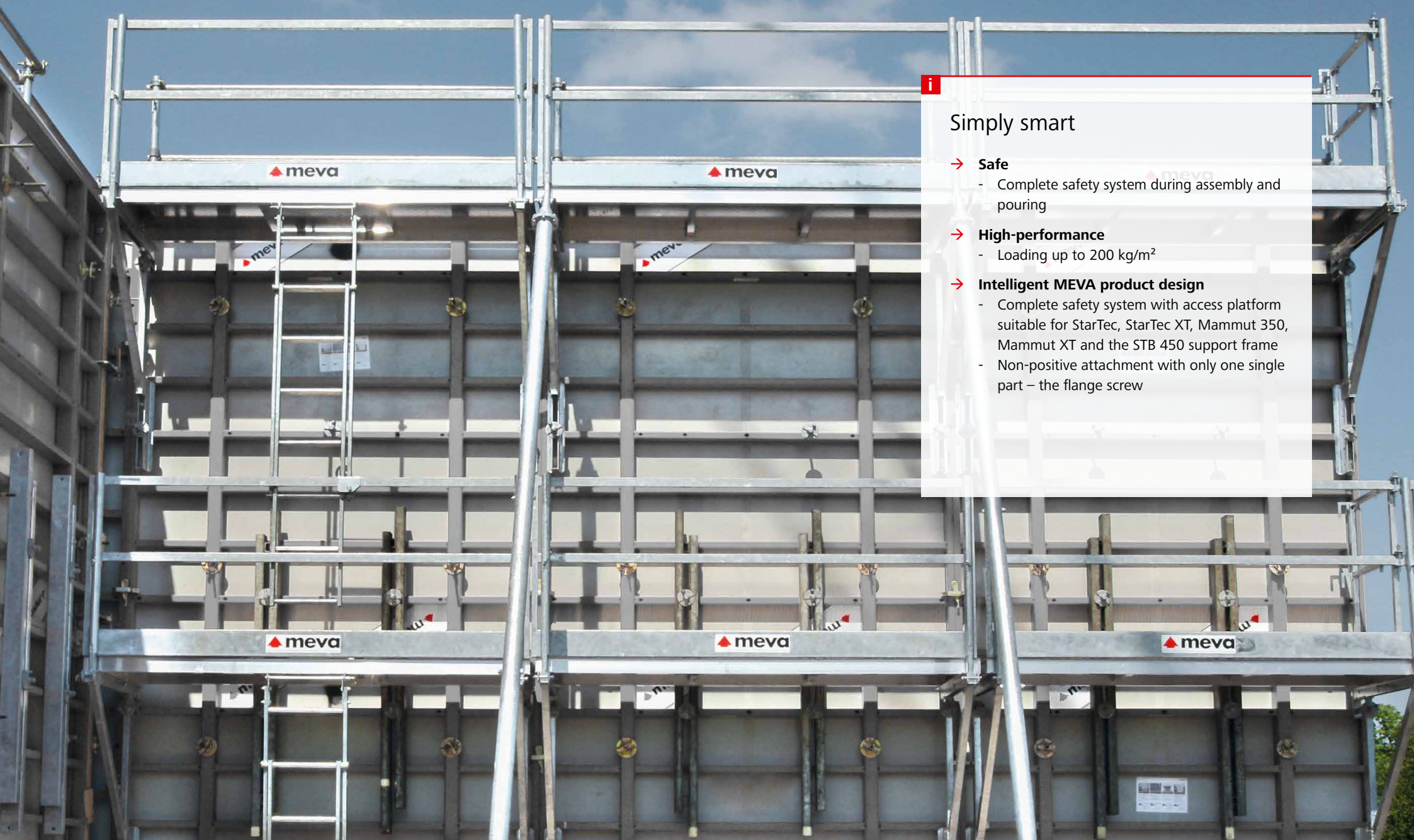
SecuritBasic is the MEVA safety system with working platforms for cost-effective work at all heights. It prevents accidents through coordinated safety and increases the work efficiency. SecuritBasic is compatible with StarTec, StarTec XT, Mammut 350, Mammut XT and the STB 450 support frame. The individual parts can be used in all systems. This reduces the complexity and material stock on the construction site.

Four platforms enable it to be adapted flexibly to suit the formwork structure. A platform width of 75 cm allows work to be performed comfortably and safely.

The units consisting of formwork and working platforms can be moved effortlessly in one piece. Tie rods and accessories can be used safely at all heights.

Like all other MEVA accessories, SecuritBasic is attached to the welded-in DW nut in the multi-function profile using the flange screw. Additional attachments and parts are not required. This eases the assembly.





**i**

### Simply smart

- **Safe**
  - Complete safety system during assembly and pouring
- **High-performance**
  - Loading up to 200 kg/m<sup>2</sup>
- **Intelligent MEVA product design**
  - Complete safety system with access platform suitable for StarTec, StarTec XT, Mammut 350, Mammut XT and the STB 450 support frame
  - Non-positive attachment with only one single part – the flange screw

## KAB – the foldable working platform

# A versatile solution

Meeting diverse building construction needs

MEVA's KAB foldable working platform is ready to use from the stack, with no tools or loose parts needed for on-site assembly. When lifted by crane, the platform folds out and automatically locks into the open position.

Whether used as a safety scaffold with masonry and at roof edges or as a climbing scaffold in conjunction with formwork, the KAB platform provides a robust and cost-effective solution requiring only few ancillary components and adaptable to virtually any situation encountered in building construction.

KAB with trailing platform for follow-up works.







## Simply smart

### → Safe and flexible

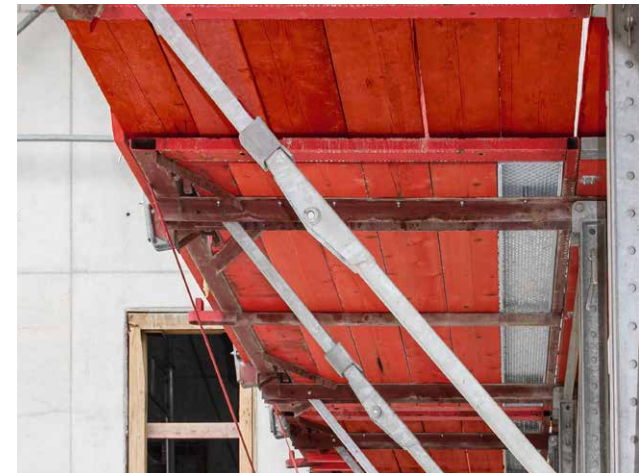
- For use as safety scaffold
- For use as working scaffold
- For use as climbing scaffold with formwork
- For use as safety and fall-arrest scaffold below eaves (with height adjustment 100)

### → A top performer

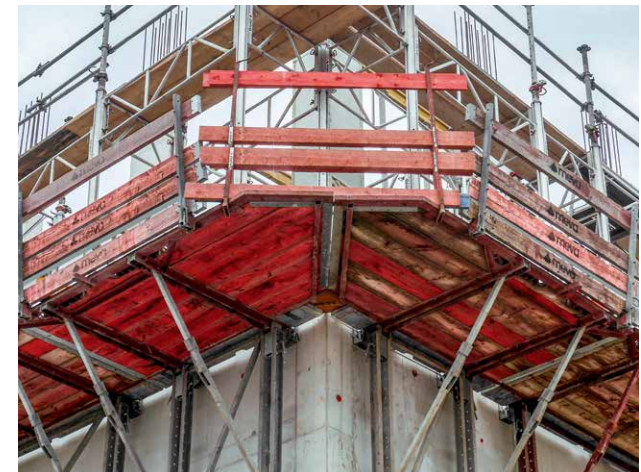
- Cone or loop suspension for working loads up to 3.0 kN/m<sup>2</sup>
- Platform supporting wall formwork heights up to 4.25 m, braced with push-pull props

### → Intelligent MEVA product design

- Preassembled for rapid deployment
- Generous platform width of 190 cm – ample space for formwork and scaffolds
- 225 and 350 cm platform lengths
- Corner platforms for various geometries
- Only 25 cm high when folded, allowing efficient storage and logistics



Braces fitted with automatic gravity locks.



The 190 cm wide platform offers ample space, even after formwork or scaffold frame assembly. The corner platforms can accommodate acute, obtuse and right-angled corners.



## Pioneer and trendsetter

# More with MEVA

Formwork. Simple. Smart.

A lot of things that are now considered to be standard in the formwork industry were developed by MEVA in Haiterbach. As a trendsetter for the entire industry, we work day in and day out with great élan to make formwork even safer, more efficient and easier to use for the end user. For us, the excellent quality of our products and technology is a matter of course.

We are independent, family-run and committed to the values of a medium-sized company in everything we do. That is why our customers may rightly expect not only technologically superior products but also comprehensive, personal commitment to projects all around the world.

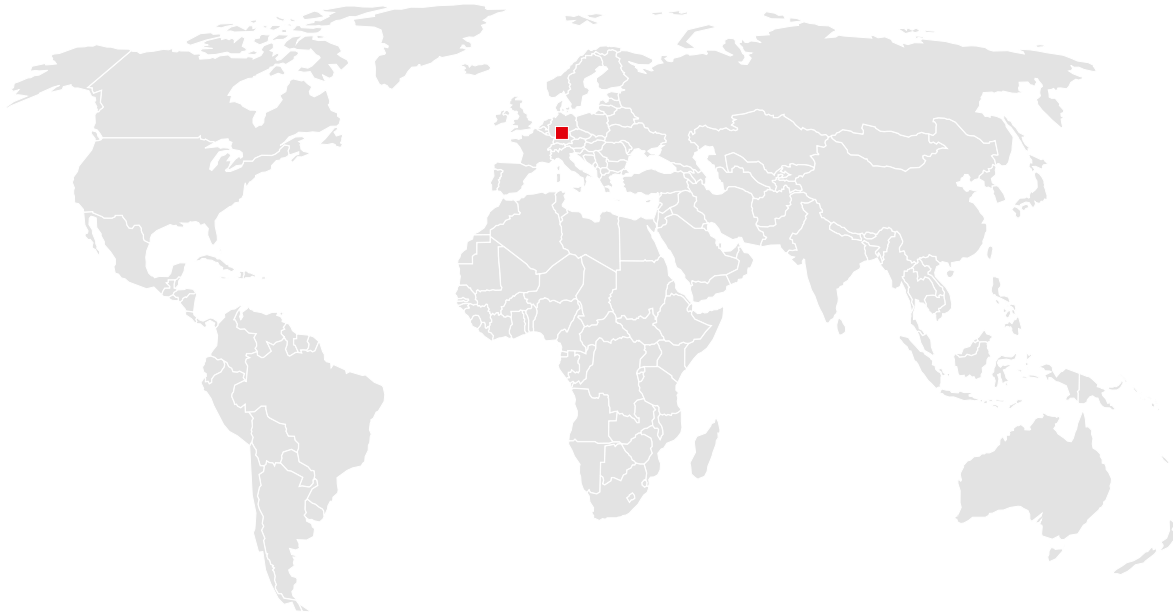
Complex special formwork or economical standard formwork: Our experience and wide range of products make us a service partner with strong consulting skills, even for the sophisticated challenges construction professionals have to master nowadays.

*Formwork.  
Simple. Smart.*



# You can rely on us wherever you are.

With 40 offices on 5 continents, we are  
on the spot wherever you need us.



## Headquarters (Germany)

---

MEVA Schalungs-Systeme GmbH  
Industriestrasse 5  
72221 Haiterbach  
Tel. +49 7456 692-01  
Fax +49 7456 692-66

info@meva.net  
www.meva.net

## Subsidiaries/international bases

---

AE-Dubai	Tel. +971 4 8042200	LATAM	latam@meva.net
AT-Pfaffstätten	Tel. +43 2252 20900-0	LU-Rodange	Tel. +352 20 283747
AU-Adelaide	Tel. +61 8 82634377	MA-Casablanca	Tel. +212 684-602243
BE-Landen	Tel. +32 11 717040	MY-Perak	Tel. +60 12 5209337
BH-Riffa	Tel. +973 3322 4290	NL-Gouda	Tel. +31 182 570770
CA-Toronto	Tel. +1 416 8565560	NO-Oslo	Tel. +47 67 154200
CH-Seon	Tel. +41 62 7697100	PA-Panama City	Tel. +507 2372222
DK-Holbæk	Tel. +45 56 311855	PH-Manila	Tel. +63 998 5416975
FR-Sarreguemines	Tel. +33 387 959938	QA-Doha	Tel. +974 4006 8485
GB-Tamworth	Tel. +44 1827 60217	SG-Singapore	Tel. +65 67354459
HU-Budapest	Tel. +36 1 2722222	US-Springfield	Tel. +1 937 3280022
IN-Mumbai	Tel. +91 22 27563430		



### MEVA Schalungs-Systeme GmbH

Industriestrasse 5      Tel. +49 7456 692-01  
72221 Haiterbach      Fax +49 7456 692-66  
Germany                  info@meva.net

[www.meva.net](http://www.meva.net)