



MIS – MEVA Integrated Safety

All-in-one solution for wall formwork



Efficient and clever

Safety at every construction stage

MIS is the foldable all-in-one solution for a fully equipped safety system for MEVA wall formwork. Stairs, rear and side protection, front railings and platform extensions increase the safety at every construction stage, and parking positions for accessories make the work easier. MIS stands for rapid construction progress without having to make economic compromises.





i

Simply smart

→ Safety

- MIS is based on the performance requirements specified in DIN EN 12811 and DIN EN 12812
- Multi-storey use
- Everything in one system: working platform, access ladder, self-closing hatch, rear and side protection, front railing, parking position for all accessories
- Platforms without hindrances: push-pull props outside the railing
- Load capacity up to 150 kg/m² (load class 3)

→ Economic efficiency

- One-off assembly reduces the amount of work involved and speeds up the construction work
- Stackable for space-saving storage, transport and construction site logistics; folded height < 30 cm
- Height can be adjusted in 5 cm increments
- Compatible with MEVA walkway brackets
- Tie rod and assembly lock holders
- Durable due to the use of hot-dip galvanised steel
- Access solution with only two platform widths (250 and 125 cm)
- Platforms remain attached to the panel, simple relocation of the unit using a crane
- Foldable side railings

MEVA Integrated Safety

A system full of ideas

Well-thought-out down to the finest detail

Safe, comfortable working conditions; multi-storeyed up to large heights; and with a minimum of assembly work – that is MIS. The access solution for concrete construction work with the flexible, high-performance Mammut XT wall formwork is safely installed while lying on the ground and then erected and relocated as a complete unit using a crane. Lifting arms enable the units to be erected without subjecting them to oblique pulling.

The one-off installation of the platforms (250 or 125 cm wide) reduces the working time required for each application. Construction site logistics and storage are simplified, as the unit consisting of the formwork panel and MIS is not even 30 cm high when folded. Numerous well-thought-out details reduce the risk of accidents occurring on the construction site and increase the efficiency.

Self-closing access hatch

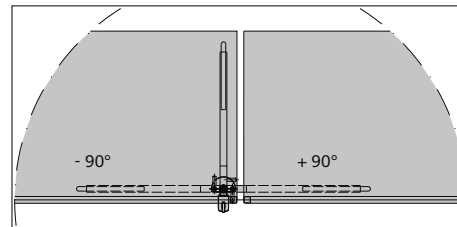
made of aluminium and integrated into the 250 cm wide platforms – for a high level of safety.

Hot-dip galvanised steel, aluminium checkered sheet flooring

Non-slip, durable, stable.

Safe unit with Mammut XT

MIS and the wall formwork remain connected to each other during transport on the construction site. This reduces assembly costs and time.

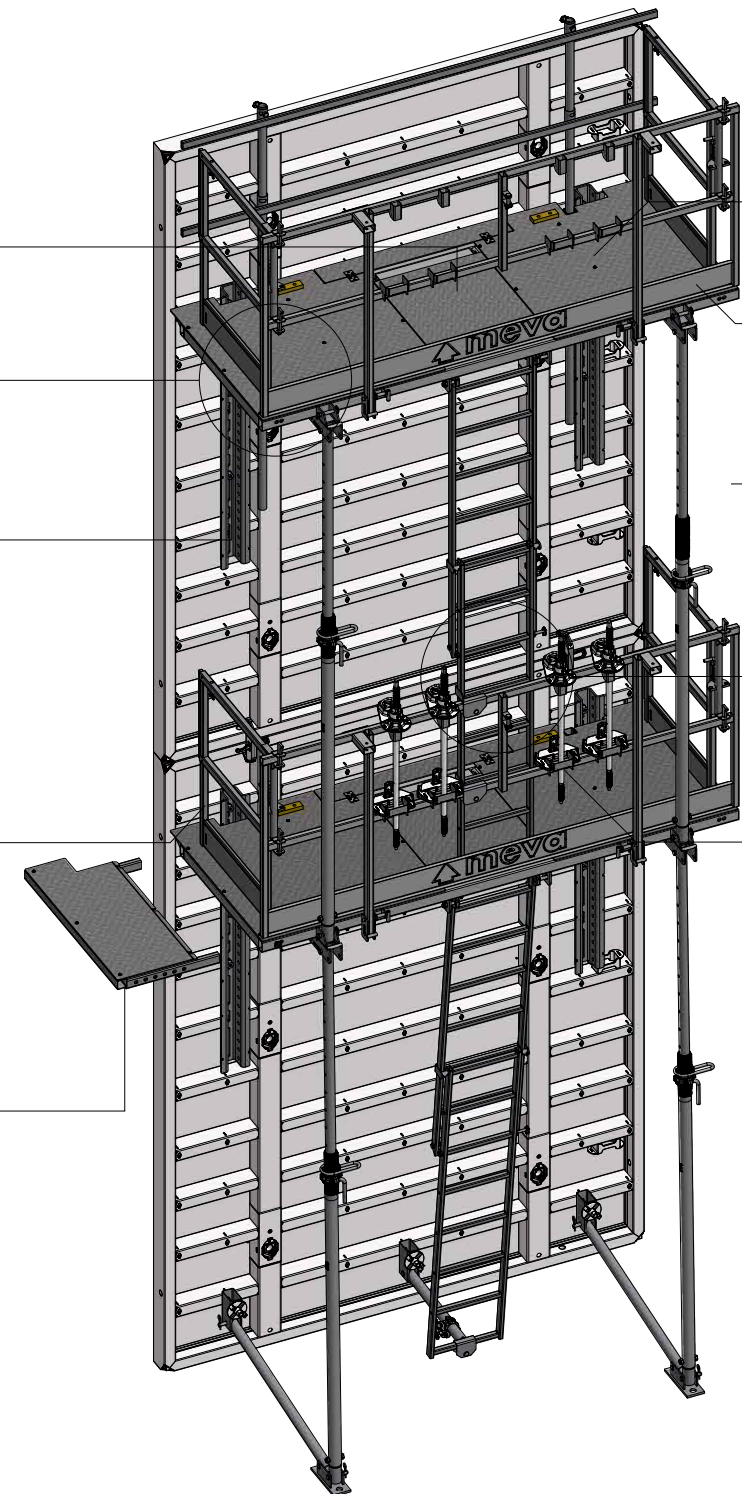


Swivel-mounted side railing

Foldable to three positions: 0°, +90°, -90° – for the extension with platform 125, for use as lateral fall protection and to provide protection for length compensations.

Platform extension

for efficient length compensation.



Load capacity up to 150 kg/m² (load class 3)

Easy and effective work on robust platforms without hindrances.

Integrated toe board

Reduces the risk of falling objects to a minimum.

Two platform widths

Access solution with two platform widths (250 cm and 125 cm) for multi-storey use.

Integrated access ladder

Safe access with one's back facing the formwork, making a rear railing superfluous. The push-pull props are located outside the railing – for greater freedom of movement.

Integrated tie rod and assembly lock holders

Well-thought-out product design for comfortable work routines and quick hand movements.



Foldable platform

Minimum of assembly work for rapid construction progress. Complete units are simply relocated using a crane. Minimum space requirements when folded (height < 30 cm) make transport and logistics easier.



Adjustable height and angle of inclination

Safety even when the formwork is inclined thanks to spaced holes in the linkage.

Pioneer and trendsetter

More with MEVA

Formwork. Simple. Smart.

A lot of things that are now considered to be standard in the formwork industry were developed by MEVA in Haiterbach. As a trendsetter for the entire industry, we work day in and day out with great élan to make formwork even safer, more efficient and easier to use for the end user. For us, the excellent quality of our products and technology is a matter of course.

We are independent, family-run and committed to the values of a medium-sized company in everything we do. That is why our customers may rightly expect not only technologically superior products but also comprehensive, personal commitment to projects all around the world.

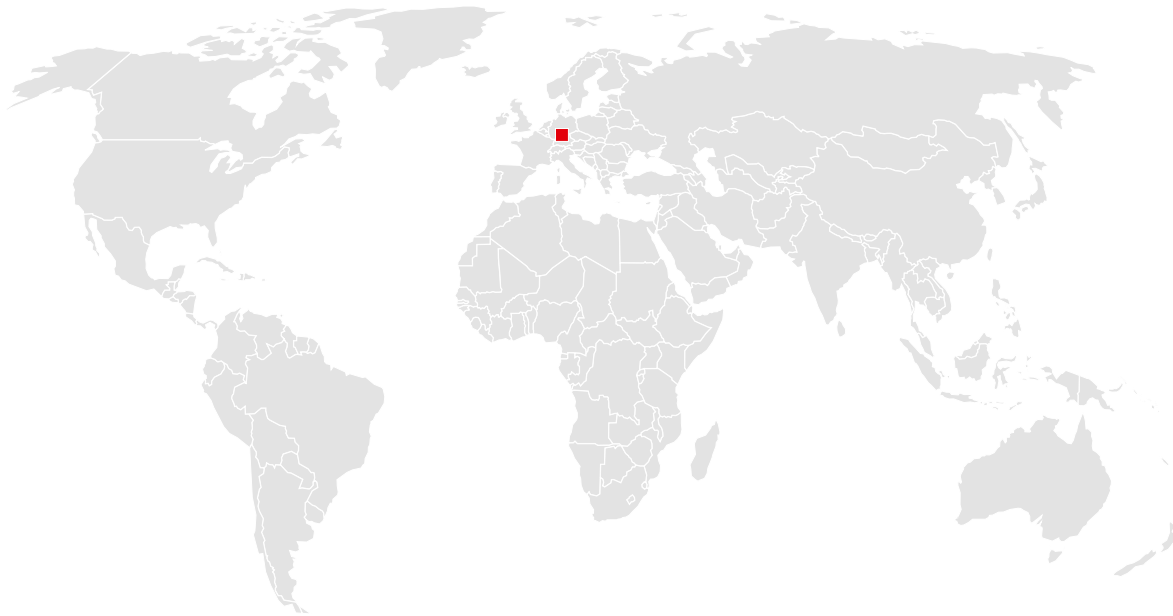
Complex special formwork or economical standard formwork: Our experience and wide range of products make us a service partner with strong consulting skills, even for the sophisticated challenges construction professionals have to master nowadays.

*Formwork.
Simple. Smart.*

▲ meva

You can rely on us wherever you are.

With 40 offices on 5 continents, we are
on the spot wherever you need us.



Headquarters (Germany)

MEVA Schalungs-Systeme GmbH
Industriestrasse 5
72221 Haiterbach
Tel. +49 7456 692-01
Fax +49 7456 692-66

info@meva.net
www.meva.net

Subsidiaries/international bases

AE-Dubai	Tel. +971 4 8042200	LATAM	latam@meva.net
AT-Pfaffstätten	Tel. +43 2252 20900-0	LU-Rodange	Tel. +352 20 283747
AU-Adelaide	Tel. +61 8 82634377	MA-Casablanca	Tel. +212 684-602243
BE-Landen	Tel. +32 11 717040	MY-Perak	Tel. +60 12 5209337
BH-Riffa	Tel. +973 3322 4290	NL-Gouda	Tel. +31 182 570770
CA-Toronto	Tel. +1 416 8565560	NO-Oslo	Tel. +47 67 154200
CH-Seon	Tel. +41 62 7697100	PA-Panama City	Tel. +507 2372222
DK-Holbæk	Tel. +45 56 311855	PH-Manila	Tel. +63 998 5416975
FR-Sarreguemines	Tel. +33 387 959938	QA-Doha	Tel. +974 4006 8485
GB-Tamworth	Tel. +44 1827 60217	SG-Singapore	Tel. +65 67354459
HU-Budapest	Tel. +36 1 2722222	US-Springfield	Tel. +1 937 3280022
IN-Mumbai	Tel. +91 22 27563430		



MEVA Schalungs-Systeme GmbH

Industriestrasse 5 Tel. +49 7456 692-01
72221 Haiterbach Fax +49 7456 692-66
Germany info@meva.net

www.meva.net