



EcoFix

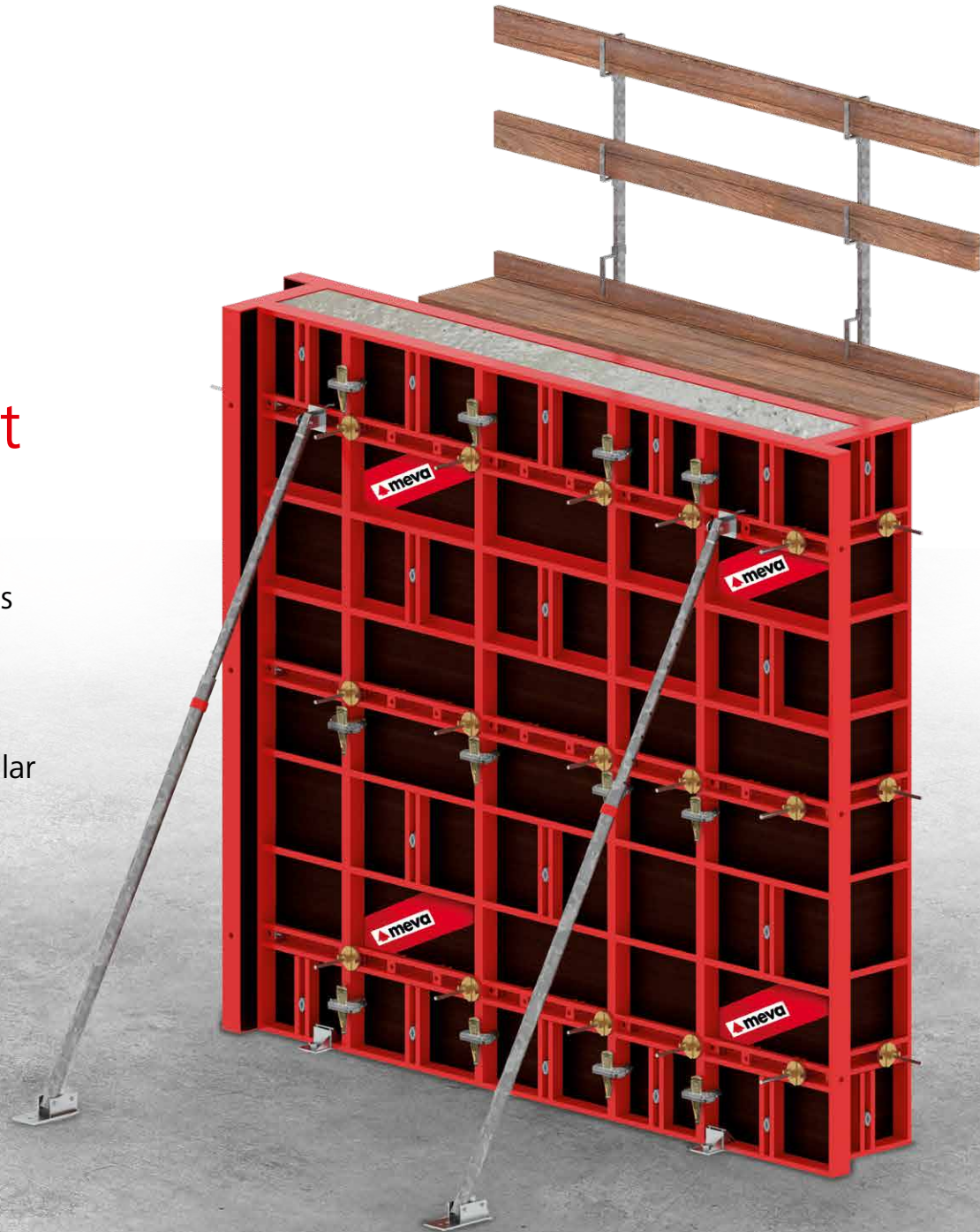
Hand-set formwork with
multipurpose steel frame panels

 **meva**

EcoFix – Hand-set formwork

Cost-effective, flexible and crane-independent

EcoFix, with its excellent price / performance ratio, is an ideal solution for all column and wall applications in a wide range of structures without the need for a crane. Thanks to its 100 % multipurpose panels, all column and wall sizes can be constructed with a minimal number of parts, making EcoFix a truly modular formwork system.





Column 15 x 15 cm



Column 60 x 60 cm

i

Simply smart

- **Flexibility**
 - EF panel heights of 300, 150 and 75 cm, EF panel widths of 75, 55, 45 and 25 cm for trouble-free corner configurations with any wall thickness
- **100 % Multipurpose panels**
 - Adjustable dimensions in 5 cm increments to provide flexibility between column and wall usage
- **Capacity**
 - Permissible fresh concrete pressure (DIN 18218) over full surface of 60 kN/m² (flatness tolerances to DIN 18202, Tab. 3, Line 6)
- **Crane-independent**
- **Closed hollow steel frame profile**
 - Structurally robust and durable
 - Torsion-proof
 - Powder coated to facilitate cleaning and reduce concrete adhesion
- **Intelligent MEVA product design**
 - Choice of high quality birch plywood with 220 g/m² phenolic coating or alkus all-plastic facing with 7-year warranty
 - MEVA Assembly Lock for structurally continuous connection with only a few hammer blows
 - Internal Corner Clamp eliminates the need for separate internal corner panels
- **Compatibility with AluFix and EcoAs**
 - Ensures seamless combination with existing MEVA inventory

Versatile and durable formwork system

Efficient building construction

EcoFix solves the problem of dealing with a variety of column and wall dimensions across projects thanks to its multipurpose panels. It is lightweight, hence labour friendly and offers both birch plywood and alkus as facing options to deliver a consistently superior concrete finish.

EcoFix is the ideal solution for

- Residential schemes
- Commercial projects
- Infrastructure and civil engineering projects

EF panel combinations		EF panel sizes [width in cm]			
		75	55	45	25
Heights [cm]	300	■	■	■	■
	150	■	■	■	■
	75	■			



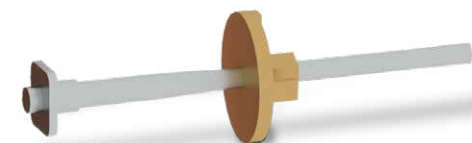
EcoFix panel 300 cm with birch plywood



EcoFix panel 150 cm with birch plywood

EcoFix

Wall full of ideas



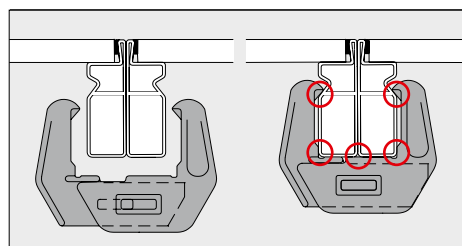
EF Tension Screw to form external corners



Tie holes at 5 cm increments to ensure a precise adjustment of column dimensions making the system flexible for usage across columns and walls

Powder coated surface finish to facilitate cleaning and reduce concrete adhesion

Closed hollow steel profile makes panel structurally robust and durable



EA Assembly Lock

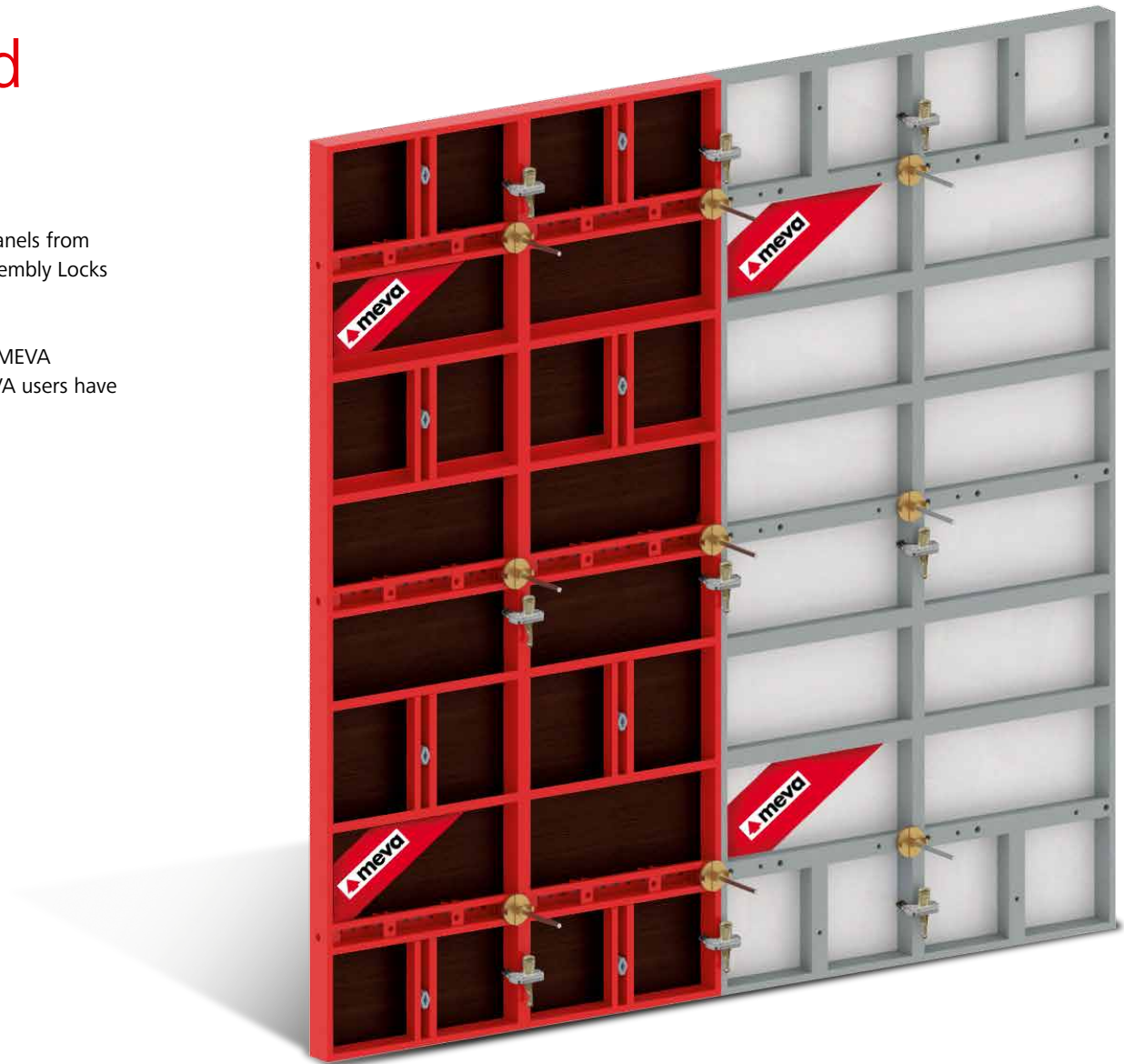
Only one component is needed for rapid, reliable panel connection: the MEVA Assembly Lock. Allows single-handed fitting at any position along frame. A few hammer blows suffice to achieve strong, level, stepless panel connection.

Intelligent detailing

Ease of assembly and compatibility

EcoFix is compatible with both the AluFix and EcoAs systems. Panels from all 3 systems can be connected together using the same EA Assembly Locks used by EcoFix.

The compatibility also allows EcoFix to be added to an existing MEVA formwork stock to deliver the same high performance that MEVA users have become accustomed to over the years.



Intelligent detailing

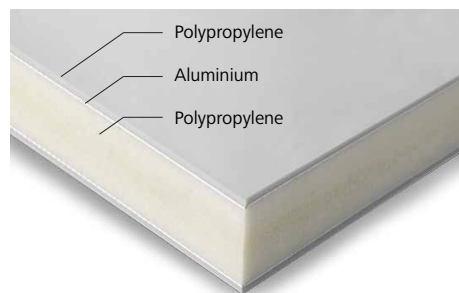
Multiple quality facing options

EcoFix comes with 15 mm thick birch plywood as standard facing, with a 220 g/m² phenolic coating for enhanced life.

alkus AL 17 is the alternate facing choice, produced on demand



15 mm birch plywood with 220 g/m² phenolic coating



alkus AL 17 all plastic wood free facing for long life

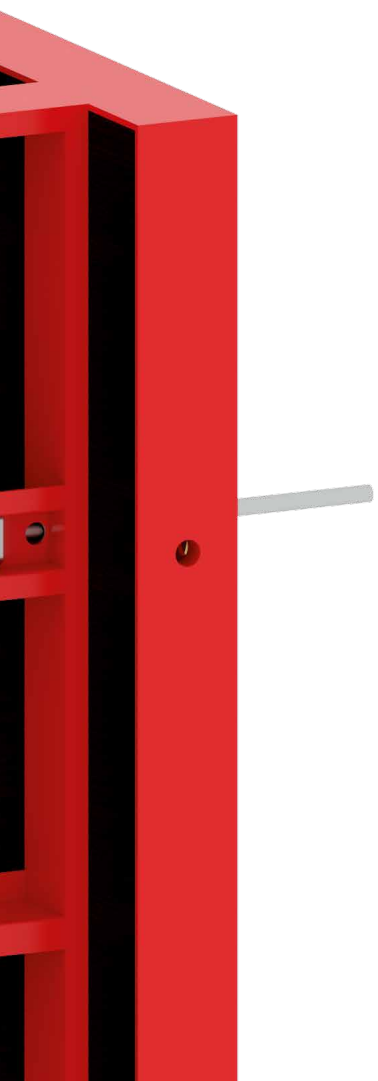
- The facing is not pre-drilled allowing the customer to drill only where required
- This feature leaves the concrete free of marks
- MEVA plugs seal the drilled holes when not in use



Intelligent detailing

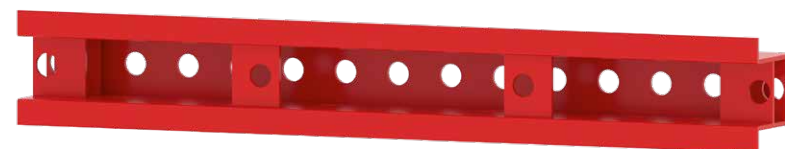
Outstanding panel features





Vertical profile with built-in Plug-in Nut is positioned at the same level as AluFix and EcoAs to allow fixing of:

- Walkway Brackets
- Vertical Alignment Rails
- Alternative Prop Connector



Tie holes at 5 cm increments ensure precise adjustment of column dimensions. They make the system flexible for usage across columns and walls

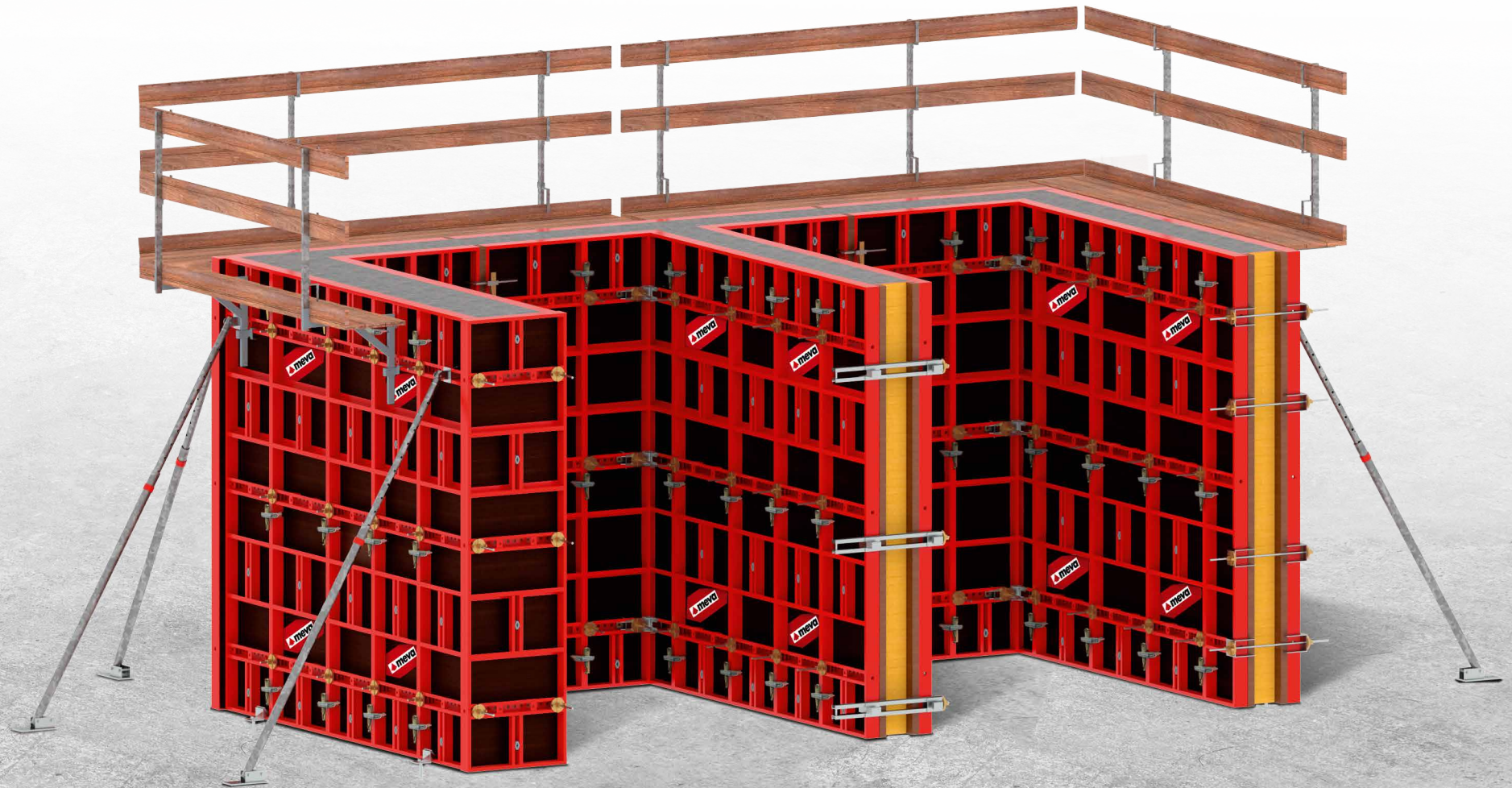


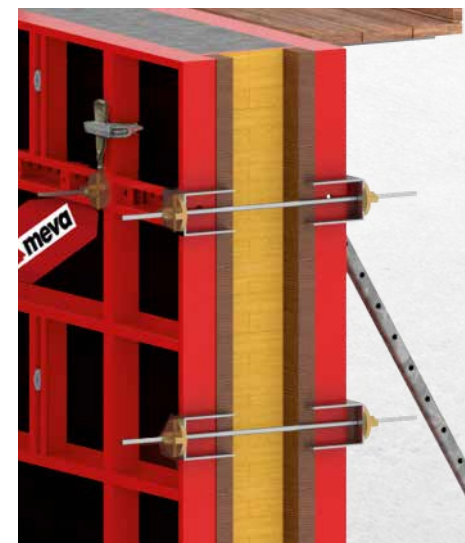
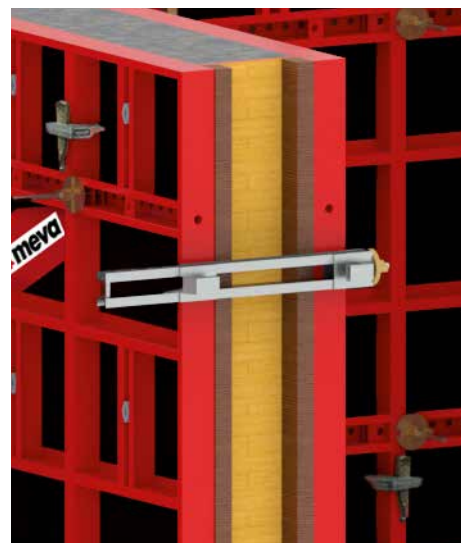
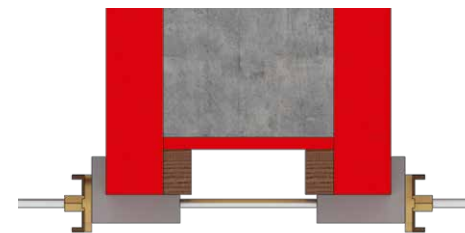
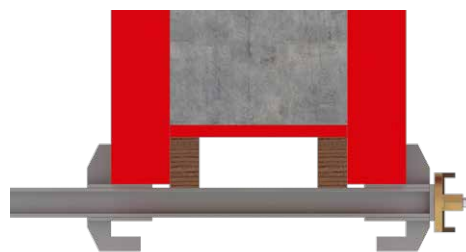
The Z profile allows easy cleaning and avoids the accumulation of slurry and grout

Flexible

For a variety of layouts

EcoFix is equipped with multiple options for shear walls and core wall construction. Different methods of end panel connections are possible depending on site requirement.





55 cm width standard EF panel
for up to 25 cm width walls.
75 cm width standard EF panel
for up to 45 cm width walls.

Stop End Bracket
with plywood stop end as an alternative to
end panel.



Stop End Claw
with plywood stop end for wall widths
up to 20 cm.

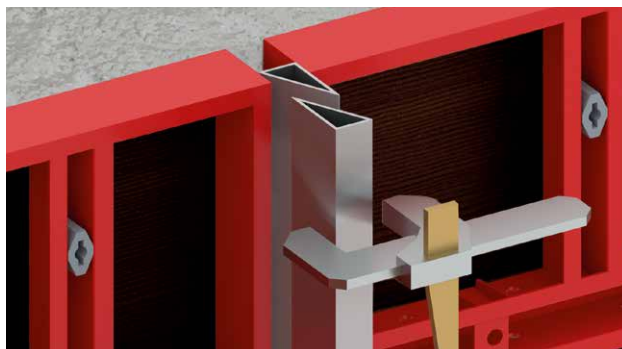


Accessories

Made for every floor plan

EcoFix achieves length compensations using Uni-Assembly Locks together with alignment rails to secure timber fillers.

Aluminium stripping fillers allow easy removal of panels in narrow spaces or lift cores.



Stripping filler for easy disassembly in narrow shaft



Accessories

Always properly aligned

EcoFix is equipped with a unique connector which holds the alignment rail in horizontal position in a semi-fixed position before being tightened by a flange nut mounted on a tie rod.

This makes the process of fixing and removing of the alignment rail labour friendly.



Sequence of fixing Alignment Rail in horizontal position



1. The Alignment Rail Connectors are anchored on the panel with a pin



2. The Alignment Rail is then mounted on the Connector

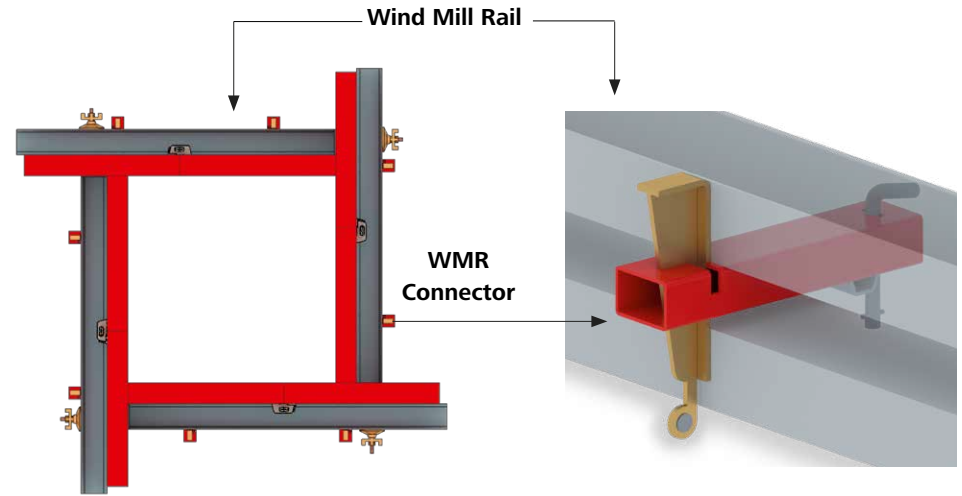


3. Flange nuts and tie rods complete the connection

Accessories

Columns with or without tying

EcoFix column formwork assembly can be accomplished easily through intelligently designed accessories. They allow panel arrangements both with and without tie-rods.

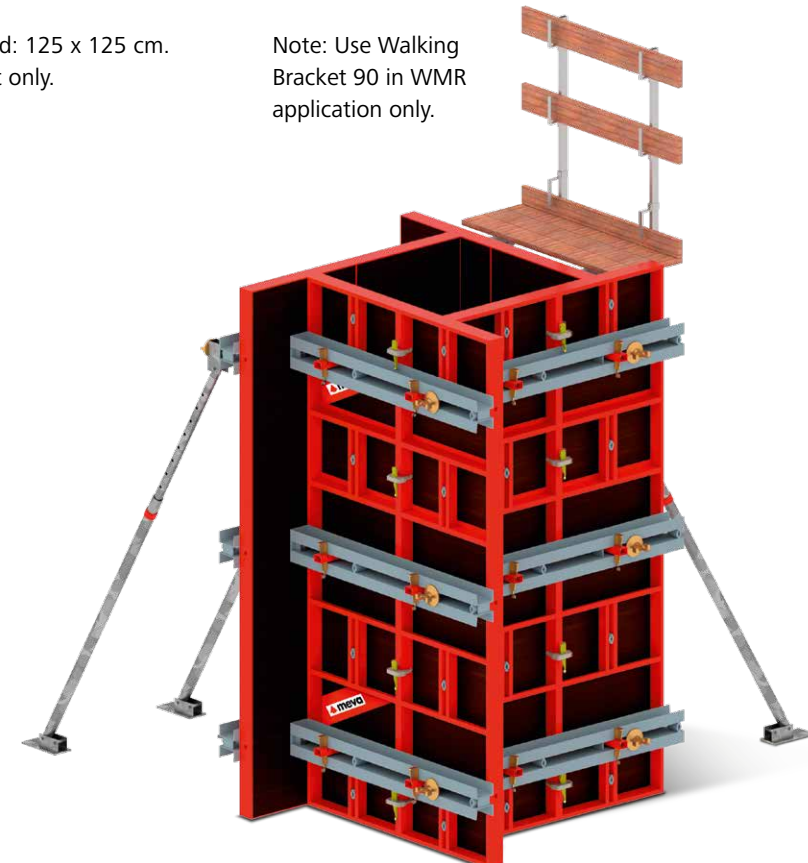
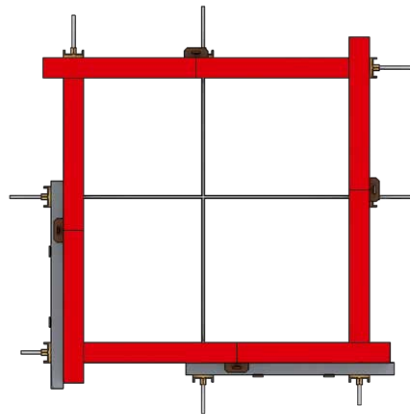


Maximum column size without tie rod: 125 x 125 cm.
 Note: Use with articulated flange nut only.

Note: Use Walking Bracket 90 in WMR application only.



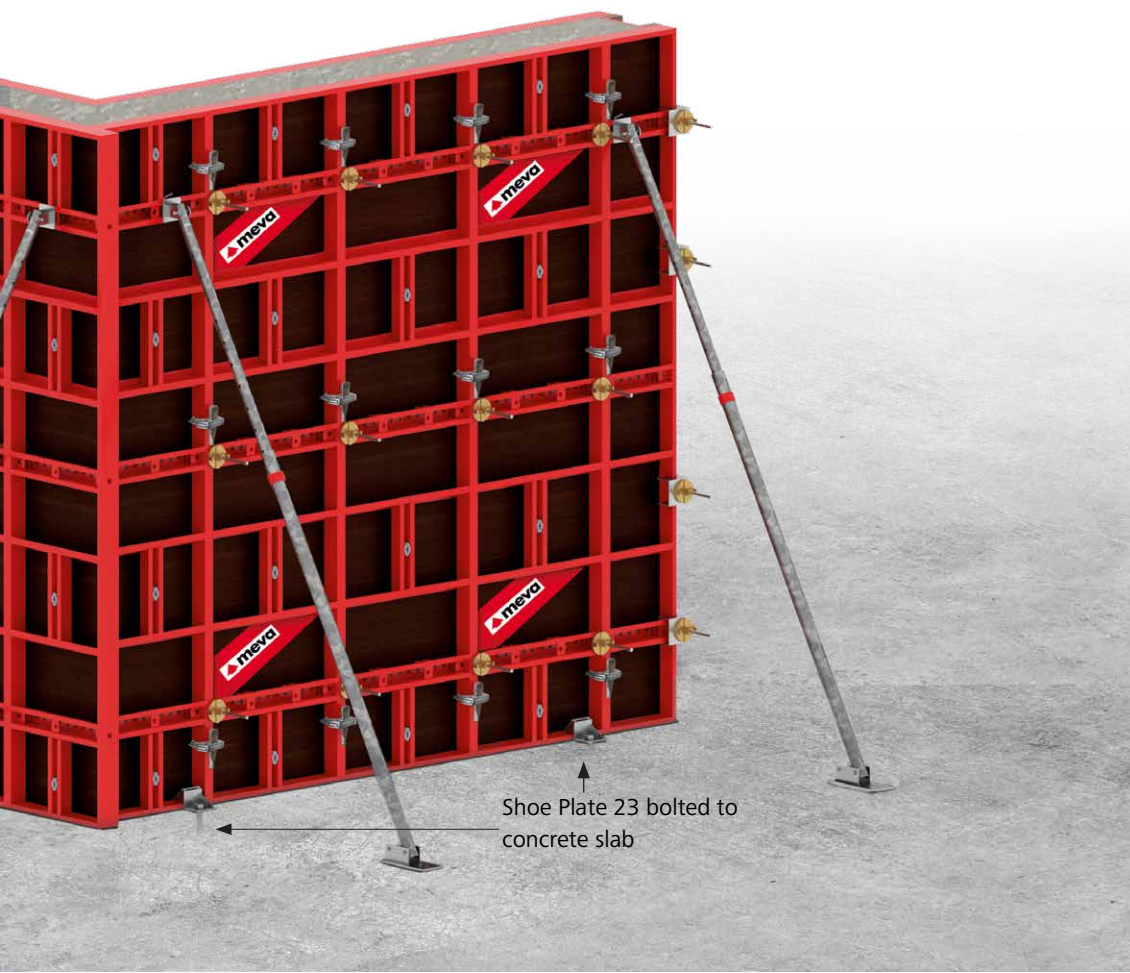
EF panel arrangement with tie rod.



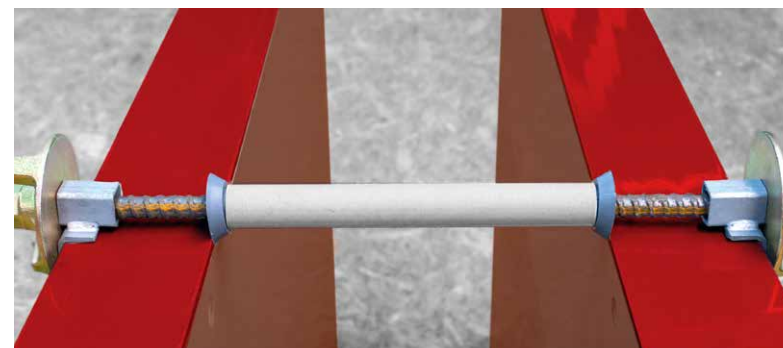
Accessories

Smart Accessories, Smart Connections

Push-Pull props are attached to the EF panel using Prop Connectors for perfect alignment. Shoe Plates anchor the EF panels in place.



Prop Connector when EF panel is vertically installed.



Tie Claw avoids passing of topmost tie rod through concrete.



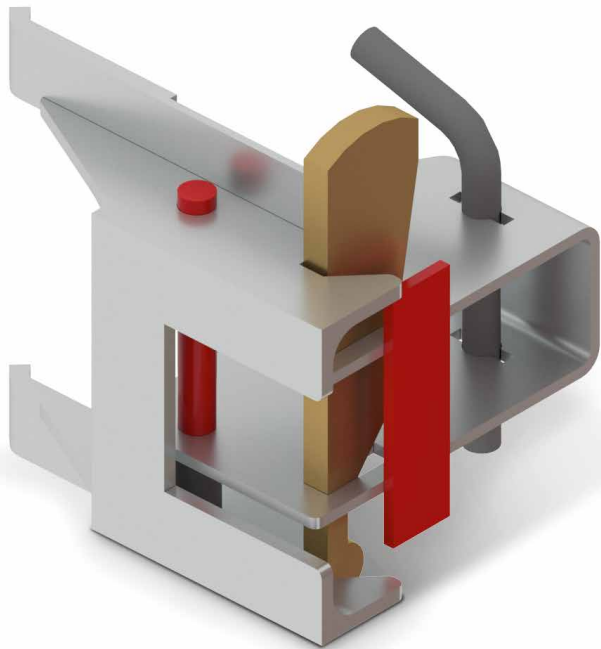
Shoe Plate 23.

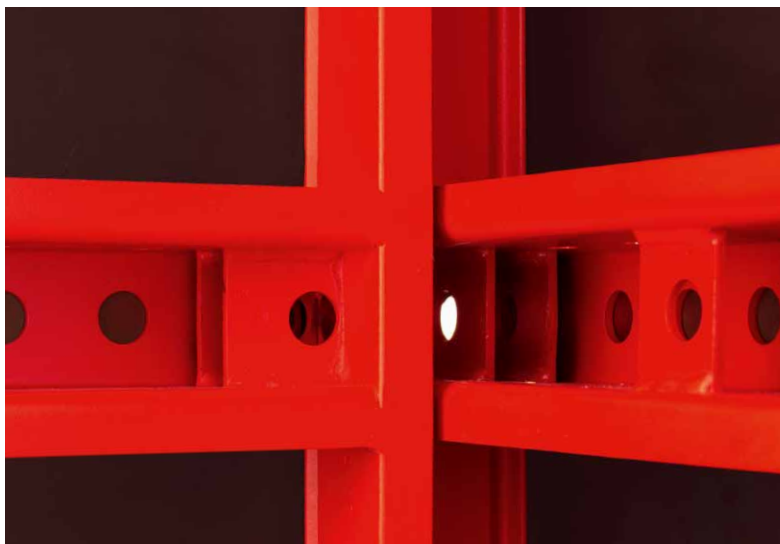
Innovative panel connections

Less parts, more flexibility

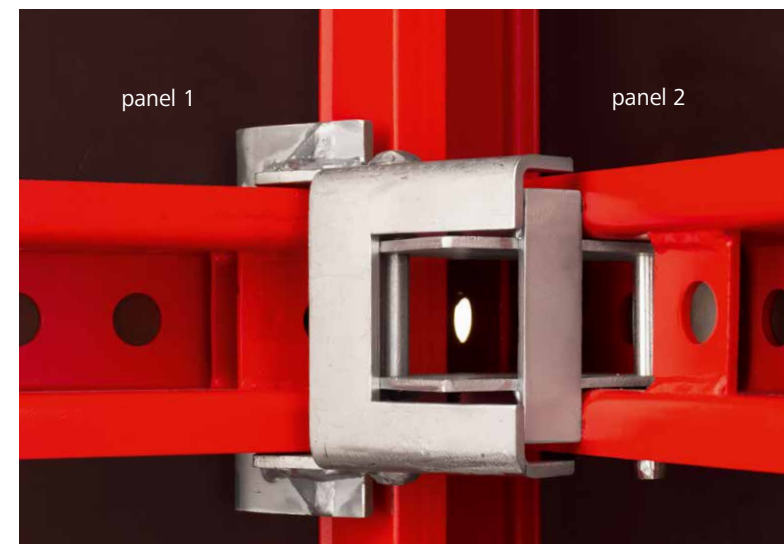
MEVA continues its journey of innovation with the Internal Corner Clamp (ICC), developed for the EcoFix

- It eliminates the need for separate internal corner panels
- Reduces the quantity of accessories and additional inventory items
- Results in time and cost savings

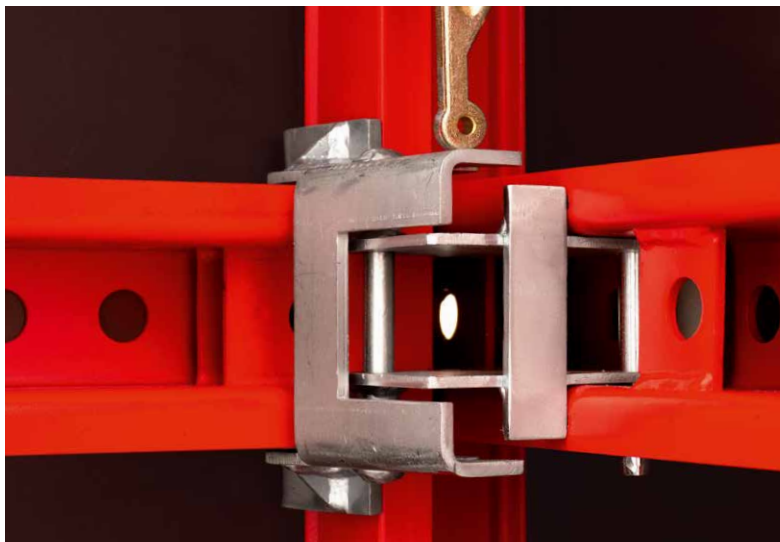




1. Bring the two panels to be joined at 90 degrees close to each other



2. Insert the ICC inside the perforated profile of panel 2 and lock it with pin



3. Insert the wedge through the ICC and lightly hammer in place to complete the connection



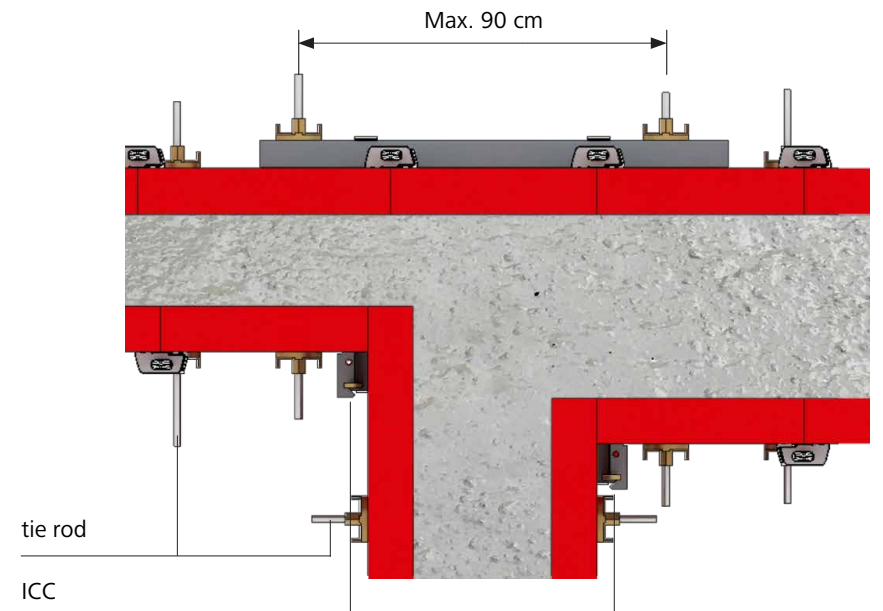
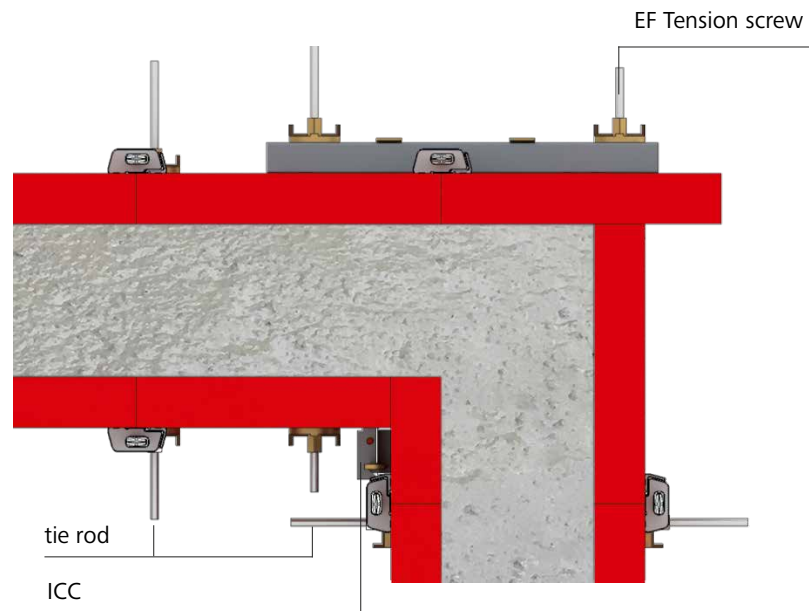
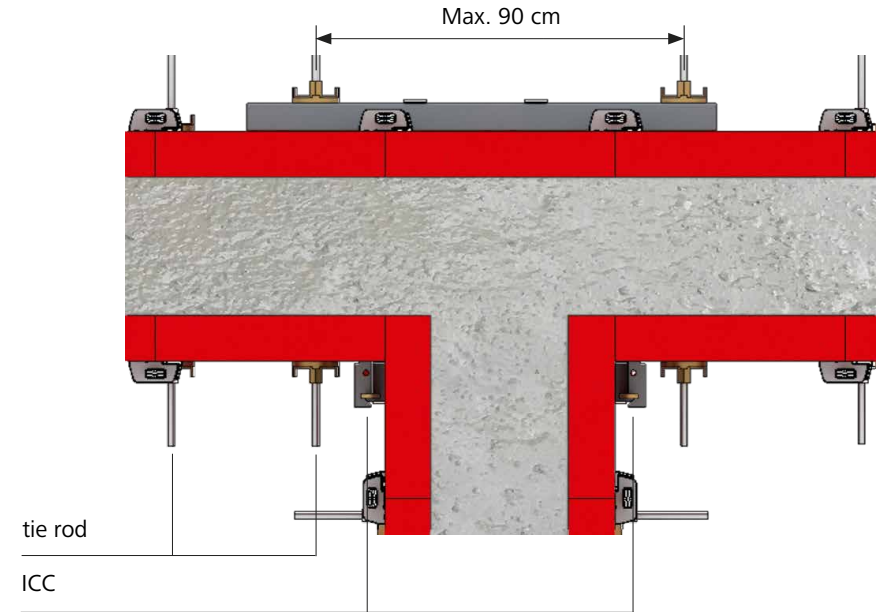
4. Tie rods with flange nuts on both panels provide additional anchorage

Innovative panel connections

Corner solutions

With EcoFix, various T and L junctions of panels are possible with minimal accessories.

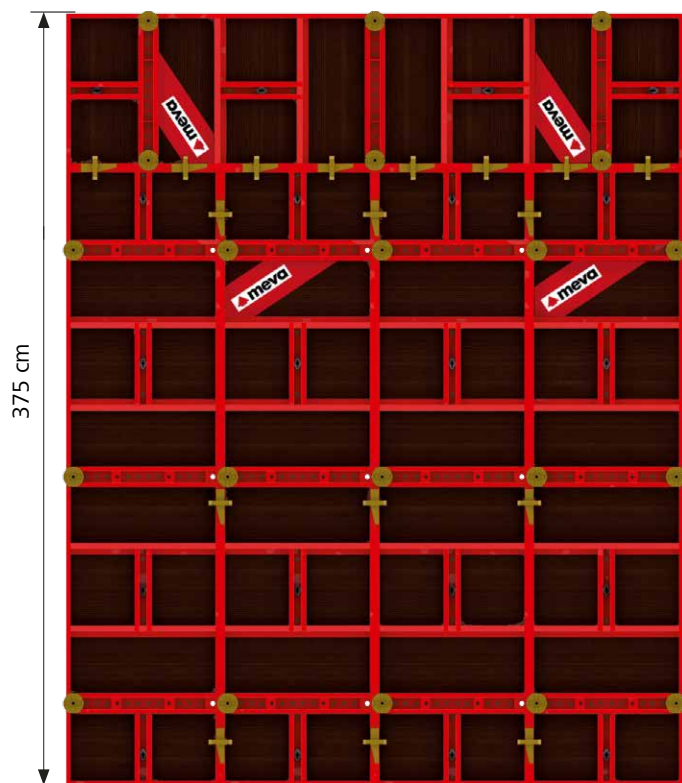
EcoFix enables cost-effective and efficient connections by making use of Internal Corner Clamps, EF Tension screws and rails for compensations and appropriate placement of tie rods.



Stacking of panels

Height Extensions

All EcoFix panels are symmetrical and have the ability to be combined vertically or horizontally allowing for economic height and width extensions.



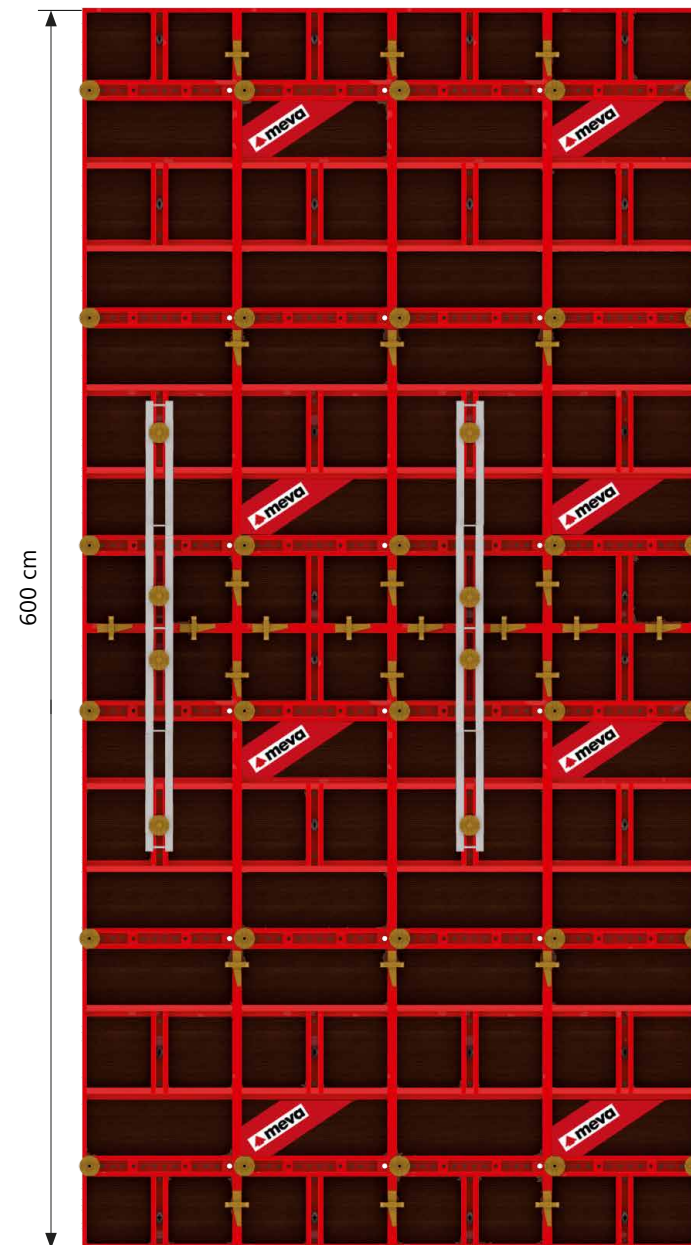
Horizontal EF panel stacked on vertical EF panel

In the case of a horizontal EF panel placed on a vertical panel, assembly locks provided on all joints complete the connection

When the top horizontal EF panel being up to 25 cm panel width, the top tie holes are left vacant

Alignment rails are used in a vertical orientation on the EF panel joints when two vertical panels are stacked

A flange screw completes the connection



Vertical stacking of EF panels

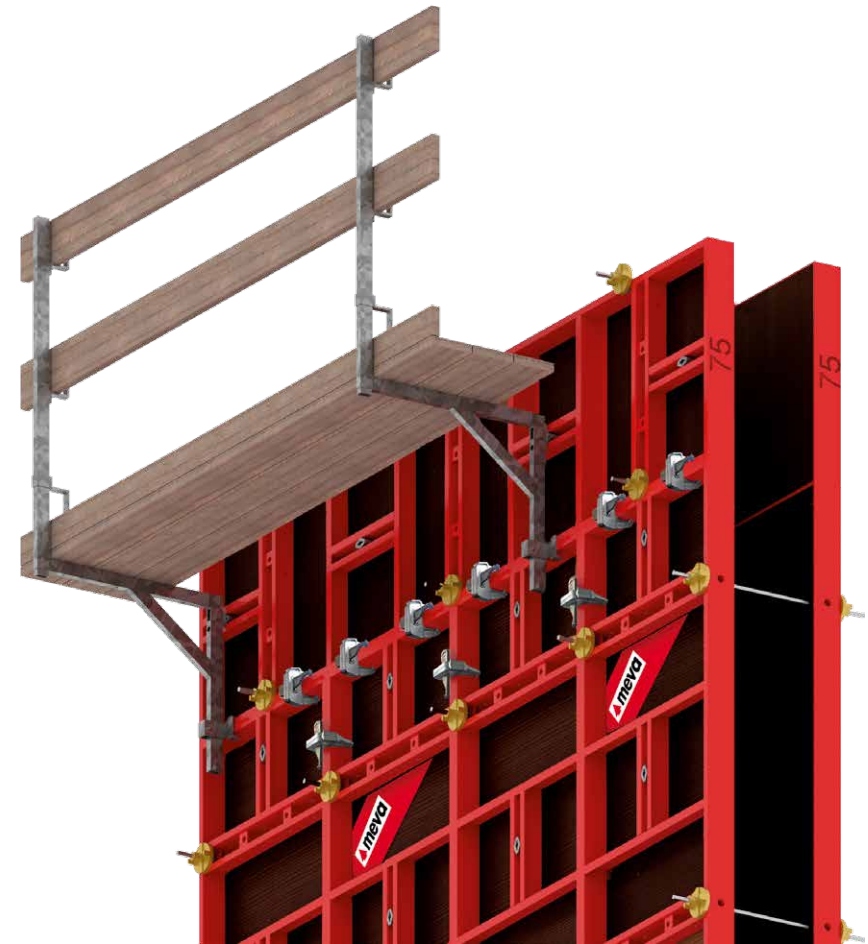
Walkway Bracket

A safe and convenient workplace

Walkway Brackets can be connected to single panels and to panels with height extensions. With using the Walkway Bracket 65 a single pin fixed onto built-in Plug-in Nuts ensures the connection while the sliding part rests on the Cross Stiffener – no flange screw needed.



When a EF panel of less than 55 cm in width is horizontally stacked on a vertical EF panel, the Walkway Bracket is fixed onto the vertical panel.



When a 75 cm or 55 cm width EF panel is horizontally stacked on a vertical EF panel, the Walkway Bracket is attached to the horizontal panel.

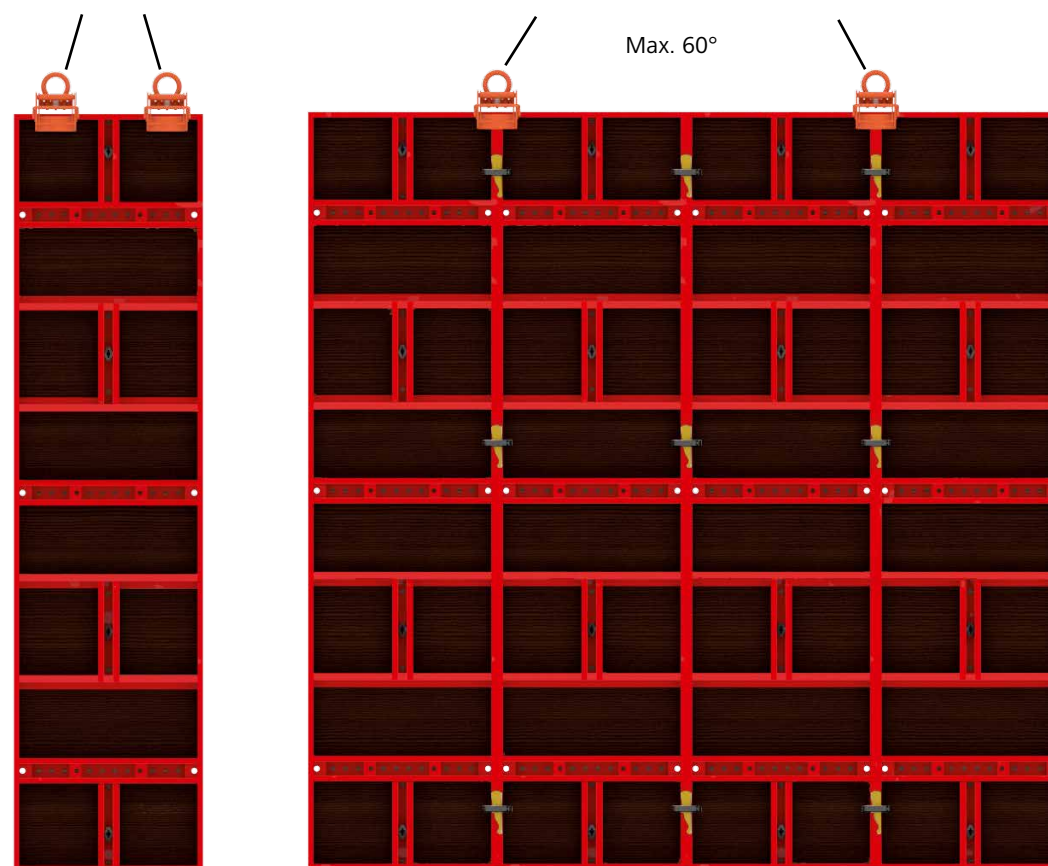
Crane ganging

A safe and convenient workplace

EcoFix panels can be ganged and moved with the use of a Crane Hook. When transporting large panel units with a crane, make sure each Crane Hook is attached at a panel joint. This prevents the Crane Hook slipping sideways. A maximum of 60 degrees to be maintained between crane slings whilst lifting.



EF/EA Crane Hook



Attention : Always use two Crane Hooks. Capacity of each Crane Hook is maximum 600 kg.

Pioneer and trendsetter

More with MEVA

Formwork. Simple. Smart.

A lot of things that are now considered to be standard in the formwork industry were developed by MEVA in Haiterbach. As a trendsetter for the entire industry, we work day in and day out with great élan to make formwork even safer, more efficient and easier to use for the end user. For us, the excellent quality of our products and technology is a matter of course.

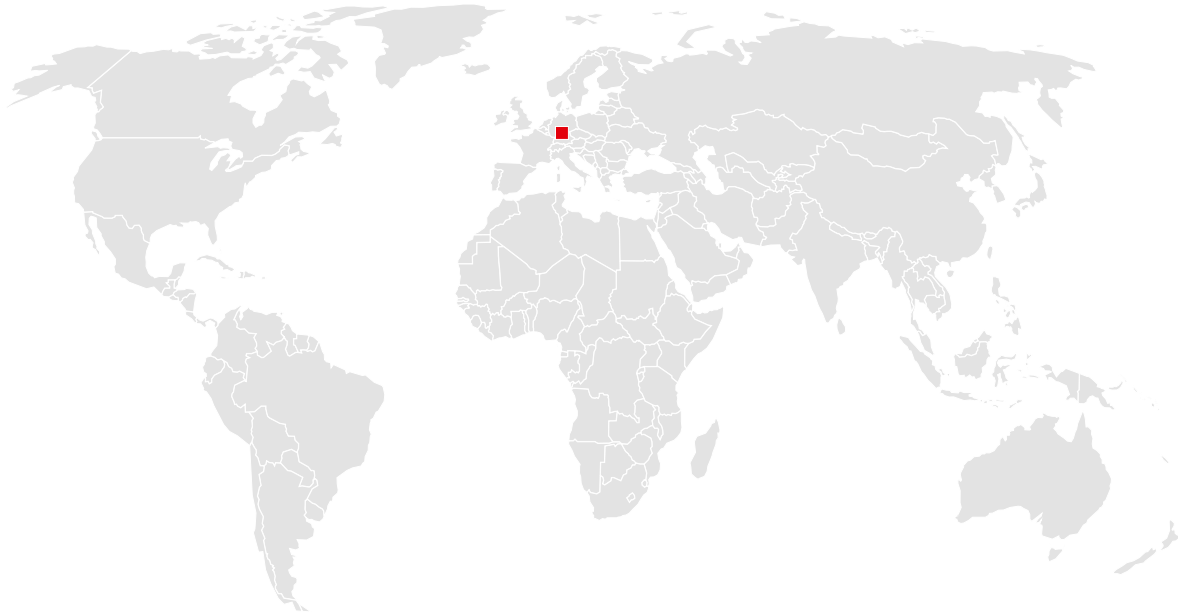
We are independent, family-run and committed to the values of a medium-sized company in everything we do. That is why our customers may rightly expect not only technologically superior products but also comprehensive, personal commitment to projects all around the world.

Complex special formwork or economical standard formwork: Our experience and wide range of products make us a service partner with strong consulting skills, even for the sophisticated challenges construction professionals have to master nowadays.



You can rely on us wherever you are.

With 40 offices on 5 continents, we are
on the spot wherever you need us.



Headquarters (Germany)

MEVA Schalungs-Systeme GmbH
Industriestrasse 5
72221 Haiterbach
Tel. +49 7456 692-01
Fax +49 7456 692-66

info@meva.net
www.meva.net

Subsidiaries/international bases

AE-Dubai	Tel. +971 4 8042200	LATAM	latam@meva.net
AT-Pfaffstätten	Tel. +43 2252 20900-0	LU-Rodange	Tel. +352 20 283747
AU-Adelaide	Tel. +61 8 82634377	MA-Casablanca	Tel. +212 684-602243
BE-Landen	Tel. +32 11 717040	MY-Perak	Tel. +60 12 5209337
BH-Riffa	Tel. +973 3322 4290	NL-Gouda	Tel. +31 182 570770
CA-Toronto	Tel. +1 416 8565560	NO-Oslo	Tel. +47 67 154200
CH-Seon	Tel. +41 62 7697100	PA-Panama City	Tel. +507 2372222
DK-Holbæk	Tel. +45 56 311855	PH-Manila	Tel. +63 998 5416975
FR-Sarreguemines	Tel. +33 387 959938	QA-Doha	Tel. +974 4006 8485
GB-Tamworth	Tel. +44 1827 60217	SG-Singapore	Tel. +65 67354459
HU-Budapest	Tel. +36 1 2722222	US-Springfield	Tel. +1 937 3280022
IN-Mumbai	Tel. +91 22 27563430		



MEVA Schalungs-Systeme GmbH

Industriestrasse 5 Tel. +49 7456 692-01
72221 Haiterbach Fax +49 7456 692-66
Germany info@meva.net

www.meva.net